

A History of Hartland Common Schools

Compiled by Bruce A. Fowler

Hartland Historical Society ~ 2020 (Updated September 1, 2021)

From the beginning of its settlement in the early 1600s, education in the “New World” remained a priority with numerous records of lands, buildings and monies appropriated to the cause. Even as American Colonies remained under rule of the British Crown and spread out, provisions were included in land grant deeds for new townships to establish schools as one of the obligations of settlement.

Following the American Revolution, the newly formed States continued this commitment to education as noted in this excerpt of the June 15, 1799 Deed from the General Court of the Commonwealth of Massachusetts to Dr. John Warren for Township No. 3 which became Hartland.

*“Excepting and reserving however, four lots of three hundred and twenty acres each for the following uses viz., One lot for the first settled minister his Heirs or assigns - One lot for the use of the ministry - **One lot for the use of schools**, and One lot for the future disposition of the General Court.”*

While we have not yet found documentation to confirm the existence of specific school locations before Hartland officially became a town on February 7, 1820, it is safe to presume early settlers from 1802 through 1820 established some form of educational system and probably built schoolhouses within the major population settlement regions of North Hartland, West Hartland and Hartland Village.

*This document uses applicable excerpts relating to the Hartland Common Schools, so called, included in the Hartland Town Reports from our archives to provide an insightful historical glimpse into the workings of the school system via annual reports presented by the School Committee, Superintendents and School Physicians. Proposed school budgets, expenditures and **Town Meeting Articles** provide further details including names of schools and provide insight into the establishment, repair and/or end of various schoolhouses located throughout the district.*

Details significantly vary from report to report and the information presented below is relative only to the Common Schools with additional notes included where applicable.

Hartland Academy, pertaining to the Hartland students who attended high school there, is not included in detail in this document but hopefully a full report on its Town Report information will be done in the future.

It will also be noted that up until the early 1880s, Town Reports were not printed and a public warrant was posted listing the general income & expense information for the upcoming meeting. Some of these early warrants did include details for the Common School expenses as seen below.

The “book” version of Town Reports as we know them did not exist until the early 1880s and it wasn’t until 1888 when it was voted to include all of details for ALL town business for the upcoming Town Meeting to be given to interested citizens a week before the Town Meeting. Town Reports are unfortunately scarce from these early years of printing with only a couple found so far from before 1900.

Warrant for First Hartland Town Meeting

As noted in the excerpt below, schools were included in the original articles for voter consideration.

To: Ambrose Finson
Esquire in the Town of Hartland

March 3, 1820

You are hereby required in the name of the Commonwealth of Massachusetts to summons and notify the freeholders and other inhabitants of said town qualified by law to vote in town meetings to act on the following articles, viz;

Article 9: To choose a Committee to district the town into Highway and School Districts.

The first Hartland Town Meeting was held on March 13, 1820. At this meeting, \$150.00 was voted and appropriated for Article 9 for the school budget and 6 Districts were originally formed noted as District No. 1, District No. 2, etc. Each District had a School Agent who in turn reported to the Superintending School Committee.

By 1828, there were 8 School Districts in Hartland, however over the next few decades population shifts and town line boundary changes brought several additions, deletions or land area rearrangements of the school districts and as many as 14 separate School Districts existed at one time or another.

Original Teacher Payment Voucher

April 9, 1825

"Rishworth Jordan, Town Treasurer or your Successor in Office; Pay Mary Ann French Twelve Dollars being for teaching School in District No. 2 to be paid in corn and grain."

Selectmen of Hartland: James Morrill & William Larrabee

A photograph of a handwritten document on aged, yellowed paper. The text is written in a cursive script. The main body of the text reads: "Rishworth Jordan Town Treasurer or your Successor in office Pay Mary Ann French Twelve Dollars being for teaching School in District No. 2 to be paid in corn and grain". Below this, the date "Hartland April 9 1825" is written. At the bottom, the names "James Morrill" and "William Larrabee" are written, followed by "Selectmen of Hartland". The paper shows signs of age, including creases and discoloration.

Hartland Ministerial and School Fund

March 4, 1850

Town Warrant Article No. 10: To see if the Town will vote to accept the report of the Trustees of the Ministerial & School Fund.

To except of their report, the following is a true copy, pursuant to the requirements of the Statute of Maine we, the undersigned Trustees of the Ministerial and School Fund of the Town of Hartland, do hereby report the standing of said fund as on the Fourth Day of March, 1850, said fund consisting of a town order against the Town of Hartland dated February 25, 1847 for the sum of One Thousand Twenty-Eight Dollars Twenty-Three Cents. We have received the interest on said order for 1849 and distributed the same amongst the several school districts in Hartland.

The above being the standing of said fund up to this date all of which is respectfully submitted by Trustees of the Ministerial and School Fund of the Town of Hartland;

Thomas Fuller

Joseph P. Roberts

Richard Gowen

A true copy attest: James Fuller (Jr), Town Clerk

1858 Hartland Town Warrant

These partial details were noted in the 1959 Town Report taken from the 1858 Town Meeting Warrant:

	Amount of Money Raised
Support of Schools	\$ 600.00
Support of Poor	\$ 450.00
Town Charges	\$ 200.00
Debts	\$ 700.00
Upper Bridge	\$ 25.00
<u>Buy & fence Burying Ground</u>	<u>\$ 60.00</u>
Total	\$ 2,035.00

	Some of the Expenses
Support of Poor	\$ 649.82
John Rowell, Selectman and Assessor	\$ 29.00
Thomas Finson, Selectman and Assessor	\$ 15.00
James Fuller (Jr), Selectman and Assessor	\$ 27.58
L. Morrill, Superintendent of Schools	\$ 32.33
Osgood Gower, Damage on Horse	\$ 10.00
Samuel Ricker, Land Damage	\$ 25.00
Samuel Bryant, Land Damage	\$ 20.00

1865 Hartland Town Warrant

For the support of Schools the past year, and for School Orders heretofor given and not yet presented for payment: \$700.82

ANNUAL REPORT,
Of the Financial Standing of the town of
HARTLAND,
in Somerset County, as prepared and submitted by the
Selectmen of said town, in the month of February,
1865.

Liabilities—Paupers.

For the support of Paupers for the past year, and Orders
heretofore given for the support of Paupers and not yet
presented for payment, \$329 82

Schools.

For the support of Schools the past year, and for School Or-
ders heretofore given and not yet presented for payment, \$700 82

Miscellaneous Orders.

Miscellaneous Orders outstanding against the town, \$8827 96
Bounties due drafted men who are now in the service or have
furnished substitutes, (not yet ordered,) \$4050 00
Town charges and incidental expenditures for the year past,
estimated at \$300 00
Total indebtedness of town, \$12908 80

Resources of Town.

Due from Collector for 1864, \$564 00
" " previous to 1864, 42 40
Due from State for aid furnished families of Soldiers, 1864, 1037 66
Total resources of town, \$1644 06
Indebtedness above resources, \$11964 54

LAWRENCE WILLIAMS, } Selectmen
S. E. PRESCOTT, } of
Wm. FOLSOM. } Hartland.

Known Schools of Hartland

The schools below are mentioned within the Town Reports over the decades. Several are also noted on the 1860, 1883 & 1900 Maps of Hartland but designated only as "S.H.". Several more schools are likely to have existed before town boundary line changes but they are unknown so far.

Some of the schoolhouses below which had previously been located within Hartland's original land boundaries were later "shared" with neighboring towns to which the land had been annexed to including Athens (Corson's Corner), Canaan (Slab City) and Palmyra (Unknown Name). Tuition was paid to those towns for Hartland based pupils to attend school there due to their proximity of the schoolhouse and a lack of viable and consistent means of transportation to another Hartland School District.

North Hartland

Corson's Corner School (aka Coston's Corner School, later part of Athens, closed 1933)

Starbird School (aka North Hartland School, near Starbird Pond, closed 1917)

Burrill School (on the former Burrill Road, closed by 1900)

Stafford School (near Ferry Road at Stafford Pond, closed by 1900)

Webber School (near Ferry Road at Stafford Pond, built in 1905 to replace Stafford School, closed 1931)

West Hartland

Slab City School (Southwest of Morrill Pond, later part of Canaan)

Church's Corner School (South of Morrill Pond, closed by 1900)

Palmyra School (Unknown name located near Pittsfield Avenue, closed by 1900)

Rand School (North of Morrill Pond, closed 1917)

Huff Hill School (closed 1917)

Bean's Corner School (later part of Pittsfield, closed 1931)

Fuller's Corner School (last of the Rural Schools to close 1950)

Hartland Village

Ireland School (Original schoolhouse located at the future town swimming pool lot, closed 1916)

Pleasant Street School (aka Athens Street School, 1916-1950 replaced Ireland School)

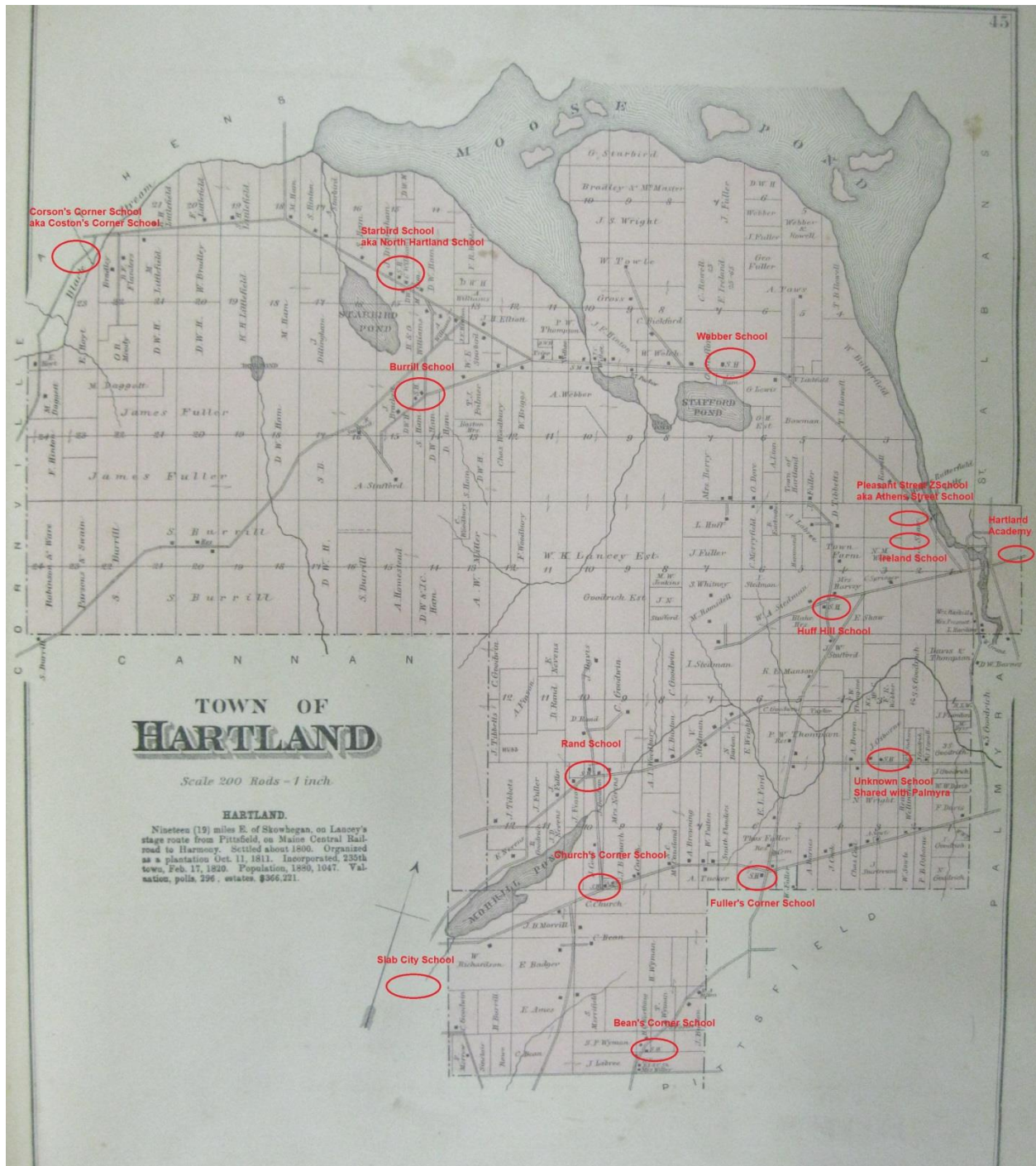
Hartland Academy (Bottom Floor Rooms used for Common School pupils)

Vestry School Rooms (1937-1940, Methodist Church, temporary use for Common School pupils)

Randlett Block School Rooms (1944-1950, temporary use for Common School pupils)

Hartland Consolidated School (Built in 1950 replacing all existing Common Schoolhouses until 1967)

1883 Map Noting Known Hartland Schoolhouse Locations



Note: The new schoolhouse built on Pleasant Street (aka Athens Road) in 1916 to replace the former Ireland School did not exist at the time but is indicated on the map as a reference. The Webber School was formerly the location of the Stafford School in 1883.

It is unclear exactly when but eventually a new school administrative system was formed replacing the former School Agent System. The new so called District Superintendence System included a Superintendent of Schools and a Superintending School Committee. Future references in the Town Reports to the various schools would be made by district name instead of their former district number.

1870-1871 Maine State Yearbook and Legislative Manual for Hartland

School Committee; H. Hodges, W. H. Goodwin, Albert W. Miller

1871-1872 Maine State Yearbook and Legislative Manual for Hartland

School Supervisor; L. H. Webb

1872-1873 Maine State Yearbook and Legislative Manual for Hartland

School Supervisor; L. H. Webb

1877-1878 Maine State Yearbook and Legislative Manual for Hartland

School Committee; Charles Rowell II, James O. Bradbury, A. L. Lumbert

1878-1879 Maine State Yearbook and Legislative Manual for Hartland

School Committee; Charles Rowell II, James O. Bradbury, Dr. Harris H. Pushor

Hartland Town Report 1880-1881

Village Schools	175	<i>(Common & Secondary Schools Districts)</i>
Rural Schools (All Grades)	140	<i>(West Hartland & North Hartland Districts)</i>
H. & A. <i>(Hartland & Athens Union)</i>	18	<i>(Corson's Corner School)</i>
H. & C. <i>(Hartland & Canaan Union)</i>	8	<i>(Slab City School)</i>
H. & P. <i>(Hartland & Palmyra Union)</i>	6	<i>(Unknown Name near Pittsfield Avenue)</i>
<u>Burrill School</u>	<u>3</u>	<i>(North Hartland)</i>
Total Number of Pupils	350	<i>(Village & Rural Schools = 10 Districts)</i>
Total Cost for Support of Schools	\$1,732.56 <i>(from a total Town Budget of \$4,821.97)</i>	
Paid for Support of Schools	<u>\$1,326 38</u>	
Amount Due	\$ 427.50	

1881-1882 Maine State Yearbook and Legislative Manual for Hartland

School Committee; Charles Rowell II, James O. Bradbury, Albert W. Miller

1884-1885 Maine State Yearbook and Legislative Manual for Hartland

School Committee; Charles Rowell II, James O. Bradbury, Flora McCausland

1885-1886 Maine State Yearbook and Legislative Manual for Hartland

School Committee; Charles Rowell II, James O. Bradbury, Flora McCausland

1886-1887 Maine State Yearbook and Legislative Manual for Hartland

School Committee; Charles Rowell II, James O. Bradbury, Flora McCausland

Hartland Town Report 1888-1889

At the last annual meeting held on March 19, 1888, the following vote was passed and accordingly the following report has been made. "That the Selectmen's Report shall be printed in full, giving each order, in favor of whom and for what purpose, also that said report shall be issued at least one week before the annual meeting."

School Committee - David E. Thompson, Miss Lucelia Osborne, Lucy Burton (*from Maine State Yearbook*)

Village Schools	172	(Common & Secondary Schools)
Rural Schools (All Grades)	124	(West Hartland & North Hartland Districts)
H. & A. (Hartland & Athens Union)	14	(Corson's Corner School)
H. & C. (Hartland & Canaan Union)	14	(Slab City School)
H. & P. (Hartland & Palmyra Union)	4	(Unknown Name near Pittsfield Avenue)
<u>Burrill School</u>	<u>4</u>	<u>(North Hartland)</u>
Total Number of Pupils	332	

A sample of some of the itemized expenses noted for the Common Schools for 1888-1889

Lizzie N. Freeman	Teaching and Board	8 weeks	Dist. No. 1	\$ 64.65
Annie F. Fuller	Teaching and Board	8 weeks	Dist. No. 1	\$ 64.40
Nina H. Page	Teaching and Board	8 weeks	Dist. No. 1	\$ 56.00
Cora Webb	Teaching	6 weeks	Dist. No. 10	\$ 22.50
Elsie E. Elliott	Teaching	2 weeks	Dist. 8 & 9	\$ 9.00
Alice E. Libby	Teaching	10 weeks	Dist. No. 2	\$ 32.00
Cora M. Pennell	Teaching	7 weeks	Dist. No. 5	\$ 21.00
Dollie M. Elliott	Teaching	(unnoted)	Dist. No. 6	\$ 6.15
G. O. Bigelow	Teaching	6 weeks	Burrill Dist.	\$ 9.00
David E. Thompson	Team Hire			\$ 7.50
Allen Webber	Ten Feet of Wood		Dist. No 7	\$ 2.20
Enoch L. Ford	Boarding Teacher		Dist. No. 5	\$ 20.50
Samuel Littlefield	Board and Wages of Teacher		H. & A. Union Dist.	\$ 26.40
Noah M. Woodbury	Board of Teacher	8 weeks	Dist. No. 3 & 4	\$ 12.00
Aaron Soule	Board of Teacher	7 weeks	Dist. No. 5	\$ 9.80
William Soule	Four Cords Wood		H. & P. Union Dist.	\$ 7.00
George Lewis	One Cord Wood		Dist. No 7	\$ 3.00
Scammon Burrill	Wood, Rent and Board		Burrill Dist.	\$ 12.00
Albert W. Miller	Supplies; Chalk		Dist. No. 1	\$ 3.40
R. S. Williams	Incidentals & Service as School Agent		Dist. No. 1	\$ 20.93
T. F. Rand	Two Cords Wood		Dist. No. 4 & 8	\$ 5.20
Charles H. Springer	One Cord Wood		Dist. No. 1	\$ 2.50

Town Report 1888-1889

No Report in our HHS collection

1888-1889 Maine State Yearbook and Legislative Manual for Hartland

School Supervisor; Miss Lucelia Osborne

Town Report 1889-1890

No Report in our HHS collection

1889-1890 Maine State Yearbook and Legislative Manual for Hartland

School Committee; David E. Thompson, Miss Lucelia Osborne, Lucy Burton

Town Report 1891-1892

No Report in our HHS collection

1891-1892 Maine State Yearbook and Legislative Manual for Hartland

School Supervisor; Albert W. Miller

Town Report 1892-1893

No Report in our HHS collection

1892-1893 Maine State Yearbook and Legislative Manual for Hartland

School Supervisor; Albert W. Miller

Town Report 1894-1895

No Report in our HHS collection

1894-1895 Maine State Yearbook and Legislative Manual for Hartland

School Committee; David E. Thompson, Dr. Edwin A. Bean, P. A. Smith

Town Report 1896-1897

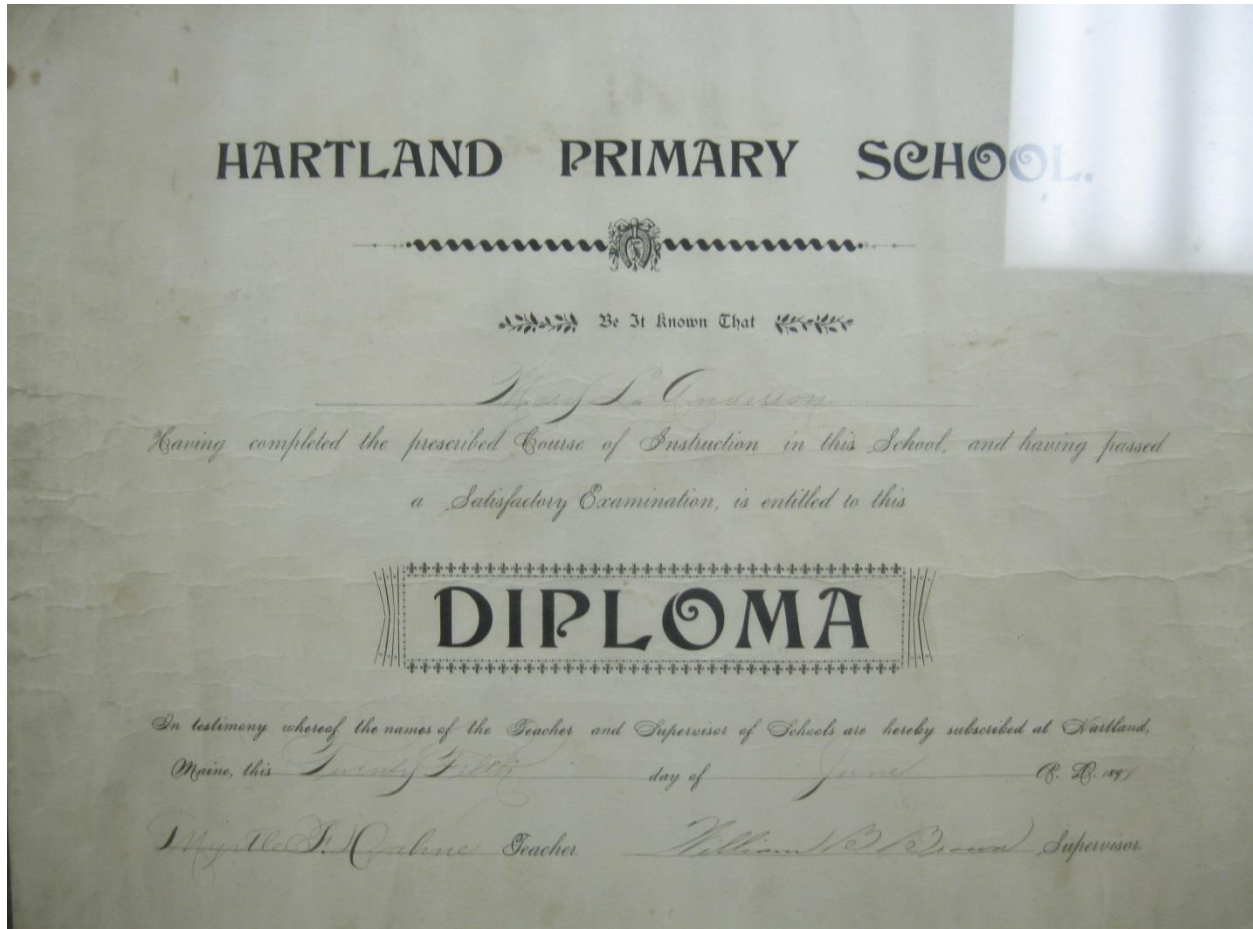
No Report in our HHS collection

1896-1897 Maine State Yearbook and Legislative Manual for Hartland

School Supervisor; Charles Rowell II

School Committee; B. Frank Davis, Dr. Edward A. Bean, Elberton P. Dyer, Miss Dolly M. Elliott

Hartland Primary School Diploma
Mary L. (Anderson) Butterfield
June 25, 1897



Town Report 1897-1898
No Report in our HHS collection
1897-1898 Maine State Yearbook and Legislative Manual for Hartland
School Supervisor; Elberton P. Dyer
School Committee; Frank Davis, Fred Thompson, L. H. Goodwin

ANNUAL MEETING OF EASTERN SOMERSET EDUCATIONAL ASSOCIATION
Reprinted from The Hartland Tribune
Thursday, December 1, 1898

The Eastern Somerset Educational Association held their Annual Meeting at the Hartland Opera House on Friday and Saturday, the 25th and 26th of November 1898. There were about 125 teachers present and also a large number of the citizens of the town. All of the parts were very instructive and the papers were

thoroughly discussed by the members. It was voted to hold the meetings semi-annually in the future instead of annually as has been the custom heretofore. The following program was carried out:

FRIDAY FORENOON

Address of Welcome: O. A. Drake, A.B., Pittsfield

Value of an Education: P. R. Longley, Principal, St. Albans

Difficulties Met in Teaching and How Overcome: Members

Mathematics in the Lower Grades: Mrs. Lucelia (Osborne) Stafford, Hartland

FRIDAY AFTERNOON

Importance of Order in the Schools: Elberton P. Dyer, Principal, Hartland Academy

Importance of Physiology in the Common Schools: Dr. Lynne H. Blanchard, M.D., Hartland

Methods of Teaching Geography: Mrs. I. H. Brown, Hartland

Query Box: Questions and Answers

FRIDAY EVENING

Lecture: Hon. W. W. Stetson, State Superintendent of Public Schools

SATURDAY FORENOON

Election of Officers and Committees

Home Influence in the Schools: Superintendent S. I. Graves, Augusta

English in the Rural Schools: Miss D. M. Elliott, Dexter H. S.

Discussion: Opened by O. H. Drake, Pittsfield

SATURDAY AFTERNOON

Should Reading be Taught in the Common Schools? If so, How? General Discussion

How Can Superintendents Best Benefit Teachers? Superintendent Wm. McLaughlin, M.D., Harmony

What Needed Changes in the School Laws? Discussion opened by Elden Pratt, Principal, Canaan H. S.,

Report of Committee on Resolutions

The subject was opened by Superintendent William McLaughlin of Harmony who said that very few teachers taught reading as it should be taught, and that the evil would continue until the teachers stopped teaching mere words. He outlined a method which he had followed during the last few years of his teaching which was very good.

Mr. McLaughlin was followed by other teachers. Mr. Ham of Cambridge said he thought that the fifth reader was a thing of the past, and that one of Shakespeare's plays, which cost only about one fourth as much was far preferable. Mr. Ham doubtless expressed the sentiment of the majority of the teachers present.

Superintendent Graves was listened to with great interest, his subject, "Home Influence in the Schools" was one which enlisted the sympathy of all present, both teachers and citizens. Mr. Graves spoke of the unjust criticism of parents, who knew nothing of the work being done and were not capable of criticizing.

He thought that if the parents would trust the teachers more fully, and would strive with them to make the school a success, a great change would take place in our schools.

Mr. Graves was strongly opposed to corporal punishment and drew some vivid pictures of brutality which had come under his observation. He remarked that he had used corporal punishment, but whenever he met a pupil who had been chastised by him, he felt like apologizing to him for it. For in most cases, had the pupil received proper training in the home, punishment would not have been necessary.

Town Report 1898-1899

No Report in our HHS collection

1898-1899 Maine State Yearbook and Legislative Manual for Hartland:

School Superintendent; Clyde H. Smith

School Committee; J. S. Rowe, Thomas A. Linn, Frank Tibbetts

Town Report 1899-1900

No Report in our HHS collection

1899-1900 Maine State Yearbook and Legislative Manual for Hartland:

School Superintendent; Clyde H. Smith

School Committee; Thomas A. Linn, Frank Tibbetts, Dr. Charles A. Moulton

Town Report 1900-1901

No Report in our HHS collection

Town Report 1901-1902

No Report in our HHS collection

1901-1902 Maine State Yearbook and Legislative Manual for Hartland:

School Superintendent; Clyde H. Smith

School Committee; Frank Tibbetts, Dr. Charles A. Moulton, George M. Lancey

Town Report 1902-1903

The following school related Articles for consideration at the Annual Town Meeting would be seen in similar wording in every Town Report throughout the next few decades and are not repeated in this document in further reports below unless changed.

Article 8: To see if the town will elect a Superintendent of Schools or authorize the Superintending School Committee to elect the same.

Article 10: To see how much money the town will vote to raise for the support of Common Schools.

Article 11: To see how much money the town will vote to raise for the purchase of school books.

Article 12: To see how much money the town will vote to raise for the repair of school buildings and the purchase of school supplies for the ensuing year.

Article 24: To see if the town will vote to authorize the Superintending School Committee to make arrangements with the trustees of Hartland Academy for the instruction of our Free High and Grammar school pupils.

Article 25: To choose one or more Superintending School Committee Members.

Clyde H. Smith – Superintendent of Schools (*Future U.S. House of Representative of Maine*)

In presenting our report for the schools of Hartland it becomes a pleasure to inform the voters of the balance unexpended, aggregating six hundred dollars, with which to begin the labors of a new year. While our every effort has not been crowned with success and our desires rewarded by entire satisfaction, the general trend has been in behalf of our schools and their students. But the top can never be reached until there becomes cooperation between parents and teachers and the scholars advised of such a union. Let us hope that the fathers and mothers may avail themselves of this neglected opportunity, and by so doing raise the standard of our education to a higher and broader plane.

Expenditures

Teachers	\$2,568.45
Transportation	\$ 458.25
Janitors	\$ 226.55
Fuel	\$ 98.94
Repairs and supplies	\$ 199.06
<u>School Books</u>	<u>\$ 140.20</u>
Total	\$5,671.45

Wood (Fuel) for Schools

J. L. Ford	\$ 15.00
G. M. Lancey	\$ 8.00
A. P. Jordan	\$ 20.00
Hermon Richardson	\$ 4.00
Frank Withee	\$ 9.00
J. R. Picken	\$ 1.50
F. P. Staples	\$ 1.25
J P. Manson	\$ 10.00
Frank Withee	\$ 16.69
Frank Stafford	\$ 8.50
<u>Frank Tibbetts</u>	<u>\$ 10.00</u>
Total	\$ 98.94

Town Report 1903-1904

No Report in our HHS collection

1903-1904 Maine State Yearbook and Legislative Manual for Hartland:

School Superintendent; Clyde H. Smith

School Committee; George M. Lancey, A. C. Bowman, B. F. Davis

Town Report 1904-1905

No Report in our HHS collection

A 1905 newspaper article notes, *“At a recent meeting of the Hartland School Committee & Hartland Town Selectmen, plans were laid for the building of the new schoolhouse in District No. 7 as voted upon at the last Town Meeting. Selectman Edward A. Webber is to have charge of the building operations which will begin as soon as the ground will permit.”*

Town Report 1905-1906

Cost of New Schoolhouse..... \$544.32

(Including cost of shed at \$65)

Appropriated..... \$400.00

Although no location or name is noted for this new school in this report, another future newspaper article concerning a meeting held there mentions it as the new Webber School built on the former Stafford School lot which was one of the earliest schools built in North Hartland.

William B. Brown – Superintendent of Schools

No written summary report given, only financial details.

Expenditures

Paid teachers for instruction in Common Schools for 1905-06	\$1,274.03
Amount due Teachers for instruction in Common Schools for 1905-06	\$ 300.00
Paid instruction in Music in Common Schools for 1905	\$ 15.50
Paid for Janitor Service for 1905-06	\$ 174.80
Amount due for Janitor Service for 1905-06	\$ 7.50
Paid for Conveyance for pupils living in Rural Districts	\$ 368.50
Amount due for Conveyance for pupils living in Rural Districts	\$ 25.00
Amount paid Canaan for tuition at Slab City School	\$ 6.00
<u>Amount paid Cornville for tuition for Donahue children</u>	<u>\$ 27.57</u>
Total	\$2,198 90

Tuition from neighboring towns is often noted in these reports however they do not specify individual schools and likely include high school students at the Academy. In 1906, for example, tuition came from St Albans at \$60.00; Palmyra at \$24.00; Pittsfield at \$18.00 and “Tuition from Individuals” at \$21.00.

Town Report 1906-1907

No Report in our HHS collection

1906-1907 Maine State Yearbook and Legislative Manual for Hartland:

School Superintendent; R. Weston Webb

School Committee; Daniel A. Packard, Dr. Lynne H. Blanchard, Allen R. Burton

Town Report 1907-1908

Article 32: To see if town will vote to authorize its Superintending School Committee to join with either or any of the following towns, to wit, St. Albans, Palmyra or three towns for the purpose of employing a Superintendent of Schools in accordance with the provisions of Sections 40 to 45, inclusive, of Chapter 15, of the Revised Statutes.

R. Weston Webb – Superintendent of Schools

No written summary report given, only financial details.

Teachers, Assistants or Substitutes:

Fronia Trafton	Primary
Berdena Trafton	Grammar
Pearl E. Pierce	Intermediate
Della B. Fox	Corson's Corner District
Mina Candage	Corson's Corner District
Carrie Wyman	Fuller's Corner District
Lucy Burton	Fuller's Corner District
Ina Dyer	Fuller's Corner District
Leora Prentiss	Fuller's Corner District
Marian Baird	Huff Hill District
Mary Anderson	North Hartland District (<i>Starbird School</i>)
Nettie Williams	North Hartland District (<i>Starbird School</i>)
Ralph Cook	Rand District
Lillian Hight	Webber District
Mary Anderson	Webber District

Town Report 1908-1909

Article 32: To see if town will vote to authorize its Superintending School Committee to join with either or any of the following towns, to wit, St. Albans, Palmyra or three towns for the purpose of employing a Superintendent of Schools in accordance with the provisions of Sections 40 to 45, inclusive, of Chapter 15, of the Revised Statutes.

Article 33: To see if the town will vote to permit the residents interested to move the Rand Schoolhouse to a more desirable location near Goodwin's Corner, if the same be done free of expense to the town.

Report of School Superintending Committee; Allen R. Burton, Daniel A. Packard, George M. Lancey

The year passed has been one of the most satisfactory to your board during the experience of either of its members. The act of the towns of St. Albans and Palmyra together with the similar action upon the part of our own town made it possible to perfect the proposed District Organization at the beginning of the year, and the fortunate selection on the part of the joint board of Dr. James S. Norton as Superintendent of Schools has unquestionably marked an important milestone in the progress of not only the educational advantages afforded our children, but is at the same time bringing into existence an organized protection for both their moral character and physical force.

We have at times entertained fears that our people would expect too much of the first year's work under the new system, realizing as we did that much time must necessarily elapse before the reorganization of the schools could be effected and systematic work begun, but we are more than pleased at the staunch support received along all lines and believe that our town will shortly possess schools the equal of any town or city in our state, that is confined to a school year of thirty weeks, and could we in time come to be in a position to ask for funds necessary to provide thirty six weeks of school as is provided in the large towns and cities of the state, we need be second to none in the advantages to be afforded our children.

One very gratifying feature developing under the District Superintendence is this marked improvement of our rural schools, and as it is developed, if the parents can be encouraged to take an interest in the welfare of their children by keeping them in regular attendance to the schools, that the work to be done in these schools will in every sense of the word be the equal if not the superior to that accomplished in the village, as where the numbers are not so large more time is afforded for individual work, which materially serves to overcome individual irregularities that naturally occur, where the large numbers under the care of the teacher require that the work be more general.

We think that good judgement should be exercised in the care and repair of all our school buildings whether occupied or not, as we easily learn that the vacant schoolhouse of today may contain good sized schools of the near future. We earnestly ask for the co-operation of not only the parents but of the citizens of our entire town to assist in making our schools all that it is possible under the favorable laws now in existence in our state.

James S. Norton – Superintendent of Schools

Fifteen different teachers have been employed during the year, of whom six have attended Normal Schools, two having completed the course. Five hold State Certificates and two have attended summer schools; twelve have attended teacher's meetings during the year, nearly all taking some active and helpful part. Almost without exception they have been anxious to improve in their work and grateful for suggestions and criticisms.

Primary School – The pupils in this room have done splendid work during the year despite the handicap of a change of teachers every term. Of Mrs. Trafton's work it is unnecessary for me to speak as her long connection with the school has made all of you familiar with it. Mrs. Coston, a graduate of the Farmington Normal School and a teacher of wide experience was employed for the year, but for reasons beyond her control or mine, was obliged to resign at the end of the fall term. Her resignation was accepted with regret. The winter term has been under the charge of Mrs. Norton, also a trained and experienced teacher, assisted during the last half of the term by Miss Helen Smith. I may say without exaggeration that it is astonishing the amount of work accomplished in this room during the present school year. I appreciate the efforts and the willing response of the pupils and parents to the call for increased work and I appreciate the splendid quality of the teaching work which has made it possible. If any school of a system must be overcrowded it should be any other than the Primary for here is laid the foundation of the future educational edifice. In the upper grades a text book may, in a measure, take the place of a teacher but in a Primary school if the teaching force is inadequate the pupils are hampered for the whole of their school life. The addition of an assistant may temporarily relieve the situation, but what must sooner or later be provided is a separate room for the First and Second grades; then assign the next three grades to a teacher in the Primary room and thus relieve the congestion in the Intermediate room. Early in the year

the school board voted to admit pupils who had never attended school or who could not read, to the First grade, only during the first four weeks of the fall term. In no other way could the grade be maintained or any benefits be guaranteed to those who entered at the beginning of the year.

Grammar School – As a separate school this has had but two terms existence. Previous to last September the work of the upper two grades had been merged with the High School which had recently been under the charge of Mr. James and Miss Trafton, strong and successful teachers. Owing to the necessity of maintaining a standard High School with two teachers giving their entire time, as well as to the necessity of giving more attention to the grade work, Miss Anderson was put in charge at the beginning of the school year. Her work has been of a high order as every patron of the school will testify. A large class will come up for examination for High School at the close of the year and judging from the interest shown and the progress made in daily work, a large majority should be successful.

Intermediate School – Everyone interested in the work of this school sympathizes with Miss Pierce in the unfortunate illness which made her resignation at the end of the fall term necessary. Thoroughly trained for her work, she loved it and lived in it. The results obtained under her successor, Miss Gregory, in regard to discipline and instruction has been entirely satisfactory. It will take a term of hard work for pupils and teacher to bring the grades in this room to the promotion point, and it is with much pleasure that I report the engagement of Miss Gregory to complete the school year.

Webber – This is a large and interesting school. Miss Anderson's work here in the spring certainly merited the promotion which she later received. Miss Libby has been in charge for the last two terms and has done hard and honest work. I would especially mention the progress made and interest shown by the pupils of Grade 5 in this school.

Fuller's Corner – Three teachers in a year is a calamity to any school. In this particular case no great harm was done but it is a combination to be avoided. Miss Welch, though without experience was faithful and willing to learn. Miss Gregory's term in the fall showed great progress in all departments and the interest and eagerness which developed in the school under her guidance has been maintained during the winter term by Miss Bertha Smith. On the whole I can report a very prosperous year at Fuller's Corner.

Rand – Miss McDevitt has been here during the entire year and whatever progress has been made must be credited to her energetic instruction. Improvement has been marked along all lines and the efforts of teacher and pupils to provide more satisfactory surroundings are to be commended. The remodeled building is a source of pride to both and is being scrupulously cared for.

Corson's Corner – The spring term here was unfortunately without value so far as I could determine. Miss Candage's work for the last two terms has done much to make up the deficiency. She is thorough and painstaking and her school gives a good report for her. Nevertheless the grades are not quite up to the requirements and must expect hard work next year.

North Hartland (Starbird) – I was very sorry to be obliged to advise against the maintenance of this school for the few who were attending were being carefully and capably taught by Mrs. Williams. Individual instruction has been followed here and its results certainly surpassed my expectations.

Huff Hill – Miss Manson proved herself to be a primary teacher of no mean order in the one term which she taught here. The first and second grades did splendid work, and it was always a pleasure to watch the

expansion of the little minds and to make suggestions, knowing that they would be carried out beyond my thoughts.

Town Report 1909-1910

Article 29: To see what action the town will take in regard to authorizing the Selectmen to sell the Ireland Schoolhouse, so called.

Article 33: To see if the town will vote to open for school purposes, the Starbird Schoolhouse, so called, in North Hartland.

Starbird School - Spring Term	Mrs. Libby	8 Pupils
Starbird School - Fall Term	Miss Ford	10 Pupils

Report of the School Superintending Committee; Allen R. Burton, Daniel A. Packard, George M. Lancey
The year's work is proving as a whole one of the most satisfactory in our experience. Not only are we reaping the benefit of the systematic work of our District Superintendent, but the liberality of our people in supplying us with the full amount of money for school purposes asked for by your committee at the last annual town meeting, together with slight increase of school funds from the State, has made it possible by economy to carry out our work for the year as planned without a hitch.

The work as a whole in the outlying districts has been good. An increase in the amount for salaries of teachers in all these schools in the last two years, together with the benefit of the 30 weeks schooling, is giving these schools the advantage of better grades of teachers than we could expect in the past.

Our expenses for transportation are large. We cannot arrange to carry all the pupils who would like to ride, neither can we run schools in districts where the attendance will not meet the legal requirements, but have endeavored to use our best judgment for the benefit of all concerned in the consideration of every request or complaint brought to our attention.

There are some repairs necessary, particularly to a few of the school buildings and sheds of the outlying districts, which are included in our recommendations for supplies and repairs.

James S. Norton – Superintendent of Schools

The work of the year has been pleasant and very profitable; no serious difficulties have arisen to interfere with the progress of the work, and much encouragement has been received from the patrons of the schools for whose benefit we have labored. I wish to express appreciation for this help, both on my own behalf and on that of the teachers.

The general character of the work has been very satisfactory, the teachers being, almost without exception, well fitted for their duties and being, without exceeding, anxious to do their very best for the schools under their charge.

The chief need of the Common Schools for the coming year lies in the matter of repairs. Improper and unsanitary surroundings will certainly nullify much of the money and energy expended in the effort for the betterment of the schools. No amount of enthusiasm can take the place of self-respect as an inspiration

for good work. Teachers and pupils alike feel the impetus of cheerful, healthy, decent surroundings and no other investment will produce so satisfactory a return.

The schools at the Village are overcrowded and should be divided into four schools; if this is not feasible, an assistant should be provided for the Intermediate school with the understanding that this is a temporary makeshift. No teacher can do now the amount of work required in this room and the time is surely soon coming when a new building must be provided or the standard of the work lowered.

Primary School – Mrs. Norton and Miss Manson were in charge here during the spring term and excellent results were obtained. Morals and manners were emphasized in their teaching to the decided benefit of their charges. The assigned amount of work was completed and a fine class promoted to the next room. The work of the new year was taken up by Mrs. Coston and Miss Manson and has been eminently satisfactory. Visitors are astonished to see the evidence of the vast amount of work which has been done in this room during the past two years. Nothing except trained teaching and willing working could have made it possible. The ventilation of this room is particularly unsatisfactory. It is necessary to heat the assistant's room by an oil stove than which there is nothing more objectionable in a school room.

Grammar School – Very satisfactory work has been done in this school for the entire year. Miss Anderson has let no opportunity pass to impress upon her pupils the need of thinking for themselves and the result has been a decided gain in the ability of the pupils to meet the conditions which they will confront in life. Self-reliance and independence have been a part of the regular every day work here, and the advantage gained is apparent in the school work.

Intermediate School – Good progress was made in this school during the spring term under Miss Gregory, and everyone felt that it was unfortunate that she could not be retained. Under Miss Newenham's skillful management the good work has gone steadily on, and today visitors are welcomed to an orderly, hardworking school where progress is evident from day to day.

Webber – Miss Libby has been here for the whole year and progress has been continuous. Some of the classes are not quite up to the standard of the grade work but they are improving each term and will, eventually, make good.

Fuller's Corner – I have been very much pleased with the results obtained in this school this year. I should like to make special mention of one class but it might detract from the credit due every other class for hard, honest work. I appreciate the earnest teaching effort which has made this good record possible, and I believe that the patrons of the school feel that both Miss Parkman and Miss Chase are deserving of much praise for the results.

Rand – Miss McDevitt taught her fourth term at this school in the spring and gave the same excellent satisfaction that she had given in the preceding terms. The fall term was under the care of Miss Davis, a teacher without experience, but a faithful worker and a conscientious instructor. The winter term, just closed, has been taught by Miss Tainter, with entire satisfaction. The school is ready to work, and does not expect to be entertained into an education.

Coston's Corner – Faulty classification, has kept this school from doing the best work of which it is capable. Laxity in the matter of discipline seriously interfered with the value of the spring term but I have no adverse criticism to make of the work done in the fall by Miss Nichols, while abundant progress has been made during the last term under Miss Leadbetter. I hope to give the school a better chance to make good next year by regrading.

Town Report 1910-1911

Article 29: To see what action the town will take in regard to authorizing the Selectmen to sell the Ireland Schoolhouse, so called.

Article 33: To see if the town will vote to open for school purposes, the Starbird Schoolhouse, so called, in North Hartland.

F. L. Rowell – Superintendent of Schools

It has been my aim to conduct the schools along established educational lines, for if at every change of administration a revolution results, it must prove disastrous to the welfare of the schools.

The schools as a whole have made very fair progress. In the Village Schools, sickness has played its part in keeping down the attendance. In the rural schools two terms were not satisfactory.

In all eighteen teachers have been employed this year. We were not able to retain several of our teachers for the fall term and several changes were made but for the winter term as many of the fall teachers were retained as seemed advisable And on the whole this term has been the most profitable.

Three teachers, including high school, have been retained in the same school for the year and seven for two terms. The less change made when good work is being done the better.

For various reasons I shall omit the reports in detail of the several schools. It is true that while only two terms were entirely unsatisfactory, other schools and different terms in the same school have met with different degrees of success and I shall rely upon the good judgment of the citizens to fully realize this. *Common Schools noted in the financial report include; Primary, Grammar, Intermediate, Fuller's Corner, Coston's Corner, Rand & Webber.*

Town Report 1911-1912

F. L. Rowell – Superintendent of Schools

In presenting you with my second annual report, it gives me pleasure to say that our schools as a whole have been very satisfactory and better work done than last year. In the making of a school there must be cooperation as the home and the schools are working for the same ends; the making of the future citizen. In several instances there is need of more cooperation from the home but in the main I have received more useful suggestion and greater help from the home than last year which goes to show that there is a genuine interest in our schools.

Common Schools noted in the financial report include; Primary, Grammar, Intermediate, Fuller's Corner, Coston's Corner, Rand, Webber & Starbird.

Town Report 1912-1913

No Report in our HHS collection

Noted for Hartland from the 1912-1913 Maine State Yearbook and Legislative Manual:

Superintendent of Schools: F. L. Rowell

School Committee: Elberton P. Dyer, J. Howard Haley, George M. Lancey

Town Report 1913-1914

The Town Report now includes a separate page noting ALL Town Office Positions including schools.

Article 31: To see if the town will vote to maintain a school at Huff Hill.

Article 32: To see if the town will vote to maintain a school at Rand District.

Superintendent of Schools: Harry E. Fortier

School Committee: Elberton P. Dyer, J. Howard Haley, George M. Lancey

Harry E. Fortier – Superintendent of Schools

Our schools are provided only with the ordinary wood stove which heats only the immediate section of the room and makes no provision for the exchange and distribution of air. An efficient heating and ventilating system can be and should be provided for every country school.

The teachers have all worked faithfully and well and their work on the whole has shown commendable improvement. The Superintendent has received the earnest and cordial support of all and the utmost harmony has prevailed.

The needs of the schools for the ensuing year I believe to be (a) More efficient instruction in arithmetic and spelling, (b) more attention especially in the rural schools to matters of heating, lighting and ventilation, (c) separation of the Grammar School from the Academy, (d) a three school division of the first Seven Grades in the Village School.

The present plan whereby the town rents seating room in the Academy for its Grammar School pupils is detrimental to both schools and should be abandoned at the earliest possible date. Both the Academy and the grade school students are handicapped by sitting together in one room. Separate rooms would be beneficial to both schools. Besides this confusion there would also be a sharper distinction between the classes.

In the Primary and Intermediate Schools now conducted on the lower floor of the Academy there are about ninety children or forty five to a room. I wish to emphasize the need of utilizing much of the space on the lower floor that is now wasted for a third school room. This would make possible three school rooms downstairs; one to contain the First and Second Grades; one to contain the Third and Fourth Grades and the third to contain the Fifth, Sixth and Seventh Grades. For the best interests of the school children of Hartland, I earnestly urge that provision be made for the satisfaction of the above needs either in full or in part.

A new system of writing known as the Palmer Method of Business Writing was introduced in the fall and the textbooks of the same placed in the hands of all the scholars able to read. So lively has been the interest manifested by most of the schools and such the progress made by teachers and pupils in these schools, that, in my opinion, the change from the copy book system has been justified. Teachers have even gone so far as to inform me that their classes in penmanship even enjoyed the writing period and have shown me specimens of the work being done with evidences of greater satisfaction than I have ever witnessed under the old way.

I would thank all those who by their interest and support have helped to make the schools what they are. The schools for the most part appear to be well organized, the children well classified and reasonably proficient. The pupils as a body are eager and sincere in their endeavor to obtain the best possible education.

Teachers, Teacher Assistants or Substitutes:

Sadie Coston	Primary School
Julia Libby	Primary School/Assistant
Mary Connelly	Grammar School
Mabel Knowles	Intermediate School
Mary Mills	Coston's Corner School
Lottie Reed	Coston's Corner School
Alma Berry	Fuller's Corner School
Mary Packard	Fuller's Corner School
Bessie Nichols	Huff Hill School
Jesse Farnum	Rand School
Annie Fuller	Rand School
Anette Whittemore	Rand School
Flora Libby	Starbird School
Lenora Miller	Starbird School
Elizabeth Bates	Starbird School
Fred Baird	Webber School
Doris Dyer	<i>Not noted</i>
Mary Anderson	<i>Not noted</i>

Town Report 1914-1915

Article 25: To see if the town will vote to maintain a school at Huff Hill.

Article 26: To see if the town will vote to maintain a school at Rand District.

Article 33: To see if the town will vote to instruct the Superintending School Committee to run a school in the Webber District.

Superintendent of Schools: Harry E. Fortier

School Committee: Elberton P. Dyer, J. Howard Haley, George M. Lancey

Harry E. Fortier – Superintendent of Schools

The most common sources of waste in the ordinary rural school are irregularity of attendance, frequent change of teachers, poor methods, a tendency to leave school without completing the course, and lack of leadership in matters of interest to the local school.

It hardly needs to be pointed out that good attendance is largely a matter of attention and can be secured in most schools through the constant effort of teachers, pupils and parents. The total of 574 tardinesses is altogether too large. Teachers must not forget to emphasize the fact that promptness and regularity are valuable assets of good citizenship.

Transportation which is legitimate and proper in every necessary case is often given to noisy and unreasonable claimants. Again, while the one room country school must continue to occupy a large place in the rural school system of the State, yet there are undoubtedly many cases where local opinion ought to yield to the arguments for better school privileges and assist in the reasonable consolidation of the smaller schools.

<u>School</u>	<u>Spring Term</u>	<u>Fall Term</u>	<u>Winter Term</u>
Primary	Sada Coston	Nina Felton	Nina Felton
Grammar	Mary Connelly	Mary Connelly	Mary Connelly
Intermediate	Mabel Knowles	Mabel Knowles	Mabel Knowles
Bean's Corner	Rena Buzzell	Lauretta Henzie	Lauretta Henzie
Coston's Corner	Lottie Reed	Marion Buzzell	Marion Buzzell
Fuller's Corner	Irene Libby	Irene Libby	Irene Libby
Huff Hill	Bessie Nichols	Bessie Nichols	Bessie Nichols
Rand	Annie Fuller	Pearl Varney	Crystal Bowman
Starbird	Marion Buzzell	Rena Buzzell	Rena Buzzell
Webber	Flora Libby	Doris Dyer	Pearl Varney

Town Report 1915-1916

Article 37: To see if the town will vote to instruct the Superintending School Committee to run a school in the Webber District.

Article 39: To see if the town will vote to authorize the Superintending School Committee to employ a School Physician, and raise a sum of money for the same. *(Passed with \$25 raised for annual payment)*

Superintendent of Schools: Harry E. Fortier

School Committee: Elberton P. Dyer, George M. Lancey, Mrs. Thomas F. *(Margaret)* Randlett

Harry E. Fortier – Superintendent of Schools

Early in March, there was a meeting of the School Committees of Hartland and Athens at the Coston's Corner Schoolhouse. At that time arrangements were made to run the school in that district on the union plan. As the school house stands in Athens the management of that school has devolved upon the school committee of that town.

The total registration as reported on the teacher's registers has been 157. The average daily attendance for the year was 132. The decrease both in registration and in average attendance was caused partly by removals, partly by the sending of the pupils of the Coston's Corner District into the town of Athens. The average number of pupils not absent for a half day for a term was 13 less than reported in 1915. There were 130 less tardiness.

<u>School</u>	<u>Spring Term</u>	<u>Fall Term</u>	<u>Winter Term</u>
Primary	Nina Felton	Paula Williams	Paula Williams
Grammar	Mary Connelly	Mary Connelly	Mary Connelly
Intermediate	Mabel Knowles	Mabel Knowles	Mabel Knowles
Bean's Corner	Annie Fuller	Flora Gleason	Flora Gleason
Fuller's Corner	Effie Pickens	Effie Pickens	Effie Pickens
Huff Hill	Irene Libby	Irene Libby	Irene Libby
Rand	Fred Clark	Earl Robertson	Pearl Varney
Starbird	Flora Libby	Flora Libby	Flora Libby
Webber	Pearl Varney	Pearl Varney	Leta Merrick

**Hartland Common School Students
attending classes at Hartland Academy - c1916**



Town Report 1916-1917

Article 37: To see what action the town will take in regard to a new school building for the village and act upon anything relating thereto.

Article 38: To see what action the town will take regarding a Definite Plan of School Building Improvement and to act on anything relating thereto.

Superintendent of Schools: Harry E. Fortier

School Committee: Elberton P. Dyer, Margaret Randlett, Elmer M. Burton

School Physician: Dr. Charles A. Moulton

Harry E. Fortier – Superintendent of Schools

No summary report filed.

<u>School</u>	<u>Teacher</u>	<u>Pupils</u>
Primary	Irene Libby	37
Grammar	Mary Connelly	37
Intermediate	Julia Libby	42
Bean's Corner	Augusta Smith	6
Fuller's Corner	Effie Picken	15
Rand	Florence Manson	7
Starbird	Leta Libby	6
Webber	Goldie Lander	10

Dr. Charles A. Moulton – Report of School Physician: *(First School Physician's Report)*

At the beginning of the fall terms, as shown from the detailed report, I inspected each school, giving each pupil a separate examination for defects that might unfavorably affect their comfort and standing in their school work. A record of each pupil was made and is on file.

Also an inspection of the school buildings and grounds was made. I need not criticize the faulty buildings for this will be found in your superintendent's report. I wish to especially call your attention to the unsightly, filthy conditions of every one of the outhouses visited. The remedy will also be found in the modern schoolhouse plan outlined by the State. I found a few throats that should receive surgical attention. But by far the greater number were suffering from defective teeth and unhealthy gums.

The attention of the parents was called to these faults either by the pupils themselves or by cards sent through the mail. I am certain the next inspection will show the wisdom of this annual examination. Schools have been closed on account of danger from contagious diseases in only one instance. A case of Infantile Paralysis in the Bean's Corner School caused it to be closed for a time by the health authorities.

No. of schools in town visited = 9

No. of children examined = Boys 114 – Girls 103 (Total 217)

No. mentally defective = 3

No. with defective vision = 31

No. with defective hearing = 3
No. suffering from malnutrition = 4
No. suffering from adenoids = 45
No. suffering from other throat troubles or enlarged tonsils = 59
No. suffering from enlarged glands = 7
No. suffering from defective teeth = 76
No. suffering from other defects = 7
No. temporarily excluded for fear of contagion = 5

Town Report 1917-1918

Article 37: To see if the town will authorize the Superintending School Committee to maintain schools for the coming year in the following districts; Bean's Corner, Huff Hill, Webber and Starbird.

Article 38: To see if the town will vote to place a wood furnace at the new school house on Athens Road, and to act upon anything relating thereto.

Article 44: To see if the town will vote to authorize the Selectmen to purchase land for a playground at the new Ireland School and Fuller's Corner, and raise a sum of money for same.

Superintendent of Schools: Harry E. Fortier (*thru June 25, 1917*), H. B. Clifford
School Committee: Margaret Randlett, Elmer M. Burton, Halver H. Whitney
School Physician: Dr. Charles A. Moulton

H. B. Clifford – Superintendent of Schools

I am leaving the report on our new schoolhouse to the building committee (*no report filed*) and will simply say that the building is modern and pleasing, giving satisfaction to teacher and pupils. I believe the installation of sanitary toilets was no mistake, yet this and other features make advisable a small wood furnace in the cellar. An article in the warrant calls for your consideration of this.

In connection with a shifting of population we have consolidated our schools to some extent since a year ago. After regarding all sides of the matter it seemed unwise to maintain the Webber School for the fall term and the Rand and Bean's Corner schools for the winter term. With three Hartland pupils out of five children at Bean's Corner and a total of three in the Rand District, the school authorities realized that good school work could not be done and that the town could not afford to educate children at an average annual cost per pupil of from \$75 to \$100.

Even without the pupils conveyed from adjacent districts, our village schools have grown rapidly in these two terms. Compare 116 in the village schools and 156 in all the schools during the winter term of 1917 with 146 and 174 respectively during the term just completed. The new school building is nearly filled to capacity; the two rooms at the Academy building are overcrowded and the arrangements for our First and Second Grades are only a poor makeshift. If the number of our school children continues to increase at the present rate, the people of Hartland must pay the penalty of living in a smart and prosperous town by erecting a new schoolhouse. The school authorities can see no alternative.

In a year that must be full of financial stress and other burdens, it is not my purpose to plan a lengthening of the school year nor to undertake extensive repairs, but simply to keep our schools from retrograding and to do only the most needed repair work. It is superfluous to call your attention to the fact that a teacher's money has less than three-fourths the purchasing power that it had two years ago. Your school authorities are facing the alternatives of either paying our present corps of teachers more wages or of filling their places with inexperienced and untrained girls. The latter course would be poor economy. Considering the increase in teachers' salaries and the amount which must be paid for conveyance and fuel, I recommend that the town raise the sum of \$1600 for Common School purposes.

From an examination of the repair account you will see that extensive repairs have been carried out at Fuller's Corner and that Rand and Starbird Schoolhouse have been shingled, not to mention a variety of matters that needed attention at the Academy building. The amount of things found in need of attention plus the increased cost of labor and materials is responsible for the overdraft in this department. We believe that \$550 will no more than cover the needs for next year. With this amount the school authorities propose to pay the overdraft, buy supplies, pay for the new grammar school seats, finish shingling the Starbird School and provide for miscellaneous repairs.

An advanced step already prepared before my arrival has been carried out this year, the introduction of music and drawing into our village schools. Finding that we must have a fourth teacher, we sought one with ability and training in these branches and the teacher elected has accomplished good results. I feel certain that the citizens of Hartland do not need to be convinced by argument of the worth of music and drawing. The love of art is as old as the human race; pleasure from music in the home will last when children can no longer name the Presidents in order.

EXPENDITURES – School Building for Village

New Pleasant Street (aka Athens Road) Schoolhouse

Expended	\$1,676.72
<u>Appropriated</u>	<u>\$1,000.00</u>
Overdrawn	\$ 667.22

EXPENDITURES – Teachers:

Julia Libby	\$ 335.00
Irene Libby	\$ 288.00
Effie Picken	\$ 282.00
Doris Leathers	\$ 215.00
Mary Connelly	\$ 204.30
Augusta Smith	\$ 181.00
Florence Manson	\$ 176.00
Ruby Burlock	\$ 135.50
Ada McGrillis	\$ 130.00
Vera Gordon	\$ 102.00
Goldie Lander	\$ 90.50
Lida Cookson	\$ 51.00
Ella Seekins	\$ 6.60

Nina Steeves	\$ 2.10
Total	\$2,199.00

Dr. Charles A. Moulton – Report of School Physician:

A total of 210 abnormal conditions were found. Considerable attention has been given to the cleanliness of the rooms and outbuildings this year. The plumbing in the Pleasant Street School building needs a little attention, also the ventilation is not satisfactory. The room used by the Primary School at the Academy building as a recitation room is poorly heated.

Town Report 1918-1919

Article 14: To see what sum of money the town will vote to raise for enlarging the Pleasant Street School building, or building a new school building as recommended by the School Committee.

Superintendent of Schools: H. B. Clifford

School Committee: Roger Williams, J. C. Young, Greenfield H. Bowie

School Physician: Dr. Charles A. Moulton

H. B. Clifford – Superintendent of Schools

We have a strong corps of teachers this year but in the case of the village schools neither teachers nor your Superintendent have been satisfied with results because of the crowded conditions. A teacher cannot do good work in charge of three grades and fifty or sixty children. We should have only two grades to a teacher next year and are making plans for this.

One of the most important matters before you at town meeting will be the need of a new school room. In the last two years the attendance in our schools has increased from 156 to 200 and the attendance in the village alone from 116 to 172. We have not made adequate provision for this increased number of children with the result that our work is very seriously handicapped. I consider it impossible to do efficient schoolwork in our village until we have another schoolroom. Hartland has a bright future industrially and is bound to grow. Under present conditions we cannot hope to teach our children as they should be taught.

At the close of the school year last June, our text books were found to be in a deplorable condition, out of date and worn out. The School Committee examined the books in person and approved an order for better books which is responsible for the overdraft in this department.

We had only put the Fuller's Corner Schoolhouse in good shape when it was struck by lightning making it necessary to do part of the work over. In accordance with the recommendation of the School Physician we have painted the Grammar room so as to improve the lighting greatly. We shall expect to do the same for the Intermediate room this coming year. The new furnace at the Pleasant Street School has given fine satisfaction.

Because of our inability to secure a teacher, we have been unable to teach Music and Drawing in the schools this year. We shall take it up again next year if possible.

Now that the war is over and our attention is more closely fixed upon matters at home, we shall hope to keep our schools more in the public eye and to give people a better opportunity to observe what we are trying to do.

The School Committee and Superintendent recommend the following appropriations:

For Common Schools	\$3,500.00
For Text Books	\$ 300.00
For Repairs and Supplies	\$ 600.00

APPROPRIATION FOR FURNACE AT PLEASANT STREET SCHOOL

Raised by town	\$250.00
<u>Paid Steward & Marston</u>	<u>\$233.90</u>
Unexpended	\$ 16.10

EXPENDITURES – Teachers:

Doris Leathers	\$ 453.00
Mary Connelly	\$ 445.00
Ruby Burlock	\$ 327.50
Erma Emery	\$ 216.00
Julia Libby	\$ 172.00
Irene Libby	\$ 162.00
Mildred Tibbetts	\$ 150.00
Leonora Woodbury	\$ 132.00
Laurice Jackson	\$ 121.00
Alma Berry	\$ 87.00
Effie Picken	\$ 19.00
Lida Cookson	\$ 17.00
<u>Rachel Tibbetts</u>	<u>\$ 6.00</u>
Total	\$2,307.50

Dr. Charles A. Moulton – Report of School Physician:

Only two rural schools were in session. The houses and rooms were in good repair and comfortable. The Pleasant Street School building is overcrowded. There are 62 registered little ones in a room 22 x 38 x11 feet with the only intake air coming from the cellar through the heat registers. On a cold day the windows in the cellar are closed giving no free circulation of fresh air. This would give each person, including the teacher, a space of a little over 5x5x8 feet of tainted air.

Report of Hartland Board of Health:

Regarding the Influenza (*epidemic*) we certainly feel that we were very fortunate here in Hartland to escape with so few deaths and we feel very grateful to Dr. Moulton for his efforts and advice. At a meeting we decided it was best to consult with the Superintendent of School, and the Selectmen in regard to having the schoolhouses fumigated with the result that each schoolhouse was properly fumigated including the Academy.

Town Report 1919-1920

Article 10: To see what sum of money the town will vote to raise for the purchase of school books, and to act upon anything relating thereto.

Superintendent of Schools: H. B. Clifford

School Committee: Roger Williams, J. C. Young, Greenfield H. Bowie

School Physician: Dr. Charles A. Moulton

Appropriations – Pleasant Street School Building (*addition of 2nd Floor*) \$1,400.00

H. B. Clifford – Superintendent of Schools

The addition to the Primary School building was an absolute necessity. Without it we would have had three schools of 50 pupils each and would have received poor returns for the money paid for their maintenance as the teachers could not have done justice to the schools.

We regret that its total cost (\$3,622.98) was so much greater than the original estimate (\$1,400.00) but the price of practically every item used in its construction had advanced sharply when the work was begun. The building is modern, well heated, lighted and ventilated and would be a credit to any town.

A unique feature since cold weather came has been the serving of a warm lunch at the Grammar School under the direction of Mrs. Connelly and Miss (*Annie*) Fuller. Those who must carry a lunch to school have brought something to contribute to the meal and from 15 to 20 children have been saved from a cold dinner each day.

1920 is the Centennial Year of Maine's Statehood. With this in mind, the schools have devoted a period each week to the history and Geography of Maine. We plan to continue this work, as familiarity with one's state is as practical as any work in History or Geography.

The outlook for teachers for next year is very serious. Teachers are still leaving the profession steadily. Miss Florence Hale, State Agent for Rural Schools, told the Grange lecturers of the state assembled in Convention, that there are 80 schools in the state closed for lack of teachers and, which is fully significant, that 80 more ought to be closed because of incompetent teachers. The only solution is a wage scale sufficiently high to keep teachers from going into other work. This places a heavy burden upon the towns but it must be shouldered if we are to have any schools worthy of the name.

Teachers

Mary Connelly	Mildred Tibbetts	Doris Leathers	Ruby Burlock
Erma Emery	Annie Fuller	Ada McCrillis	Linda Carver
Olive Wood	Caroline Johnson		

Dr. Charles A. Moulton – Report of School Physician:

The following is my report of the examination of the pupils and school property of your town.

Whole number of disabilities requiring special attention reported to parents – 31.

No. pupils belonging – Total 232

No. pupils examined – Total 212

Summary of Examination:

No. with defective vision – 17

No. suffering from malnutrition or underweight – 102

No. suffering from defective teeth – 9

No. suffering from diseased tonsils and adenoids of throat – 89

No. mentally defective – 3

No. physically defective – 7

No. needing tooth brush – 82

Town Report 1920-1921

Article 14: To see what sum of money if any the town will vote to raise to install electric lights in the four village schoolrooms.

Article 15: To see what action the town will take in regard to the Huff Hill Schoolhouse to instruct the school committee to sell or repair same.

Article 13: To see what sum of money, if any, the town will vote to raise to paint exterior of Primary School building on Athens Street.

Superintendent of Schools: H. B. Clifford

School Committee: Roger Williams, J. C. Young, Greenfield H. Bowie

School Physician: Dr. Charles A. Moulton (*Annual Salary now at \$50*)

H. B. Clifford – Superintendent of Schools

The present school year has been the most satisfactory of any during which I have directed your schools. This has been due largely to the quality of the teachers. The average experience of the teachers is seven years and their experience, training and natural ability are aided by continuing in the same school. Five of the six elementary teachers are in the same position as last year which makes it possible for every successful teacher to do better work.

The school work done this year is indicative of what will be accomplished when the task of educating our boys and girls shall be generally considered not as a job for any 18 year old girl with a High School diploma but as a profession for our finest young people to aim for. Thus will be brought to the schoolroom a matured mind and character prepared for the great work of training children for the tasks of their own livelihood and for intelligent unselfish citizenship.

The outlook for next year for those who wish to raise less school money and yet have as good schools is not encouraging. One idea must be sacrificed to the other. A glance at the itemized cost below will show that conveyance and teachers make up two thirds of the total school cost. In no case can we maintain a school in a closed district at less cost than conveyance. Unless we compel children now riding to walk to school, we are not likely to meet with material reduction in conveyance costs.

SUMMARY OF COMMON SCHOOL EXPENDITURES:

Teachers	\$4,625.00
Conveyance	\$2,276.65
Janitors	\$ 593.00
Fuel	\$ 582.98

One new feature of the school work begun a year ago and deserving special mention is the warm dish served at noon in all but one of the schools. This has meant a great deal to the child coming to school from a distance with nothing warm to eat from morning until night. Parents, teachers and older pupils have cooperated in making this a success. I hardly need to mention that this adds considerably to the teachers' work and it helps to know that the effort is appreciated.

Teachers

Annie Fuller	Mary Connelly	Ada McGrillis	Doris Colbath
Linda Carver	Caroline Johnson	Gertrude Head	Carrie Tracy

Dr. Charles A. Moulton – Report of School Physician:

The school rooms and other property seemed to be in excellent condition for the year's work. The village school rooms are supplied with bubbling fountains and the sanitary advantages are good if properly cared for. Good janitor service is supplied. The attendance was better than usual. I found an excellent spirit of cooperation between pupils and teachers and a desire among all the pupils to correct any defects they might have. All were eager to know how to keep well and strong. For the most part they were neat and tidy. The parents and school officers and teachers are to be congratulated upon the progress the schools have made in the last 3 to 4 years along these lines.

Town Report 1921-1922

Article 40: To see what action the town will take in regard to opening a school at Bean's Corner.

Article 45: To see what sum of money the town will raise for a Music Supervisor for the schools.

Article 46: To see what sum of money if any the town will vote to raise to paint the Fuller's Corner Schoolhouse.

Superintendent of Schools: H. B. Clifford

School Committee: Roger Williams, J. C. Young, Greenfield H. Bowie

School Physician: Dr. Charles A. Moulton (*Annual Salary now at \$75*)

Appropriation for lighting Grade Rooms	\$125.00
Paid Central Maine Power for Lighting	\$175.00

Appropriation for painting Pleasant Street School	\$200.00
Paid Allen R. Burton (\$134.66) & Albert B. Deering (\$5.00)	\$139.66

H. B. Clifford – Superintendent of Schools

The enrollment in the elementary schools is about the same this year as last. In the Academy the attendance has increased more than 50% due to the fact that half the eighth grade was admitted with the ninth and that we are drawing more pupils from other towns than formerly.

The progress of the children in their studies has been good although teachers and superintendent and constantly trying to improve it. Since we have maintained a 36 week school year, it has been much easier to teach the work thoroughly. Under these conditions pupils receive as much schooling in eight grades as they formerly did in nine. In view of this fact we shall hereafter promote from the Eighth Grade to High School omitting the Ninth Grade class but not the Ninth Grade work. In this we are following the lead of most of New England and the rest of the country.

If we begin lowering wages we start upon the backward way to the old conditions of poor teachers, poor interest in the work and the child gets the short end of it. If we maintain the present rate of pay, the teacher supply will gradually improve in quality and quantity. The only sound policy, the only economical policy is, "Maintain the Standard".

The School Improvement Fund, contributed partly by the schools and partly by the town has brought decided improvements. Slate boards were placed in the village schools and sheet iron jackets for the stoves in the Rural Schools. We shall ask you to continue this fund for another year by raising \$10 per school for Library material. Our schools have free use of the Hartland Public Library but it is very helpful to have permanently in the schools supplementary reading books, reference books and at least a few biographies of famous men and women.

Children, parents, citizens, teachers and superintendent believe that there is one long felt need in our schools which should be filled at this time. The pupils ought to be receiving competent instruction in music. The grade teachers have done their best in every way but they are not specialists in music. They will be able to show excellent results when teaching under the leadership of a Music Supervisor. I have made inquiries regarding the salaries received by Music Supervisors and I believe we should appropriate \$600 for this purpose.

<u>School</u>	<u>Teacher</u>	<u># Pupils</u>
Grades 1&2	Doris Colbath	32 pupils
Grades 3&4	Ada McCrillis	45 pupils
Grades 5&6	Mary Connelly	23 pupils
Grades 7&8	Annie Fuller	39 pupils
Fuller's Corner	Linda Carver	25 pupils
Webber	Caroline Johnson/Frank Withee	10 pupils

Dr. Charles A. Moulton – Report of School Physician:

Only two rural schools have been in session this year. The buildings and rooms were in good condition for school purposes and the pupils all seemed to show a full degree of interest in their work yet their average health and personal appearance could be improved.

No serious accidents have occurred. A form of skin disease has been somewhat troublesome. There have been two cases of diphtheria which were easily controlled. In one case it was thought best to fumigate the Pleasant Street building and the school was closed one day for this purpose.

Town Report 1922-1923

Article 34: To see what sum of money the town will raise for a Music Supervisor for the schools.

Superintendent of Schools: H. B. Clifford

School Committee: Roger Williams, J. C. Young, Greenfield H. Bowie

School Physician: Dr. Charles A. Moulton

Appropriation for painting Fuller's Corner School	\$100.00
Paid Allen R. Burton, contract	\$ 75.00

H. B. Clifford – Superintendent of Schools

The attendance has been good during the greater part of the year. Sickness and severe weather have caused many absences during the winter term. Very few absences are due to lack of interest on the part of parents.

The School Improvement Fund this year has been used to place what we have termed Library Books in our elementary schools. These have included young people's lives of Washington and Lincoln, some reference material and much general good literature for both upper and lower grades. It is very much worthwhile to cultivate in boys and girls a taste for good reading. The books have been very much appreciated. We are asking that this fund be continued during the coming year with an appropriation of \$100 which we wish to use for playground apparatus. Our school grounds are without swings, teeter boards, volley balls or other equipment that bring health and happiness to boys and girls. This should fill a long felt need in our schools.

Two major items of repairing have used up the greater part of the repair funds. The first was the sanitary work at the Ireland School which consisted in clearing out and cementing the cesspool and in placing the primary school toilets from the dark basement onto the first floor. The second large item was Hartland's half of the cost of shingling the Coston's Corner Schoolhouse, at North Hartland. The Fuller's Corner Schoolhouse has been much improved by a thorough painting.

I have long been particularly interested in the problems of "small town" schools. I have come to the conclusion that the superiority of the famed city schools is due almost entirely to three things: a good teacher, remaining in the same school for a number of years, under good supervision. I confidently look for a much greater efficiency in the schools of country towns because these same factors can be brought to operate. Many rural towns cannot afford, many more think they cannot afford, the teaching and supervision. Many excellent people believe that a teacher's stay in one school should be limited to one term or at most to a year.

The last ten years have seen much progress along these three lines, however. Most country people desire no Federal and or combining of schools. They wish no further extension of State powers. If we are not

going to accept the assistance of these agencies, it is squarely up to us to provide a reasonable efficient school thru, our own local resources, even at considerable sacrifice. I feel that Hartland has done well by its schools.

I wish to speak most enthusiastically of the music supervision in the schools. Mrs. Harriet Pease of Connecticut was secured at a salary of \$400 to direct the teaching of vocal music in all the schools and to lead the Academy orchestra, under her excellent leadership our own competent teachers have accomplished a great deal in the 22 weeks which have elapsed at the time of writing this report. The ability to sing with others or to play some instrument will be a source of pleasure to our young people long after they have forgotten the products of Brazil or the names of the Presidents in order. To those worthy citizens who feel that the cost of music instruction should rest upon the individual parents alone, it should be a sufficient answer that our school children are receiving the services of a specialist for 36 weeks at a cost of less than \$2.50 per pupil.

MUSIC APPROPRIATION

Appropriated by Town	\$600.00
<u>Teaching</u>	
Harriet Pease	\$242.00
<u>Transportation</u>	
George Lewis	\$ 11.50
Earle Havey	\$ 6.50
Harriet Pease	\$ 11.63
Sherman Gray	\$ 2.50
E. C. Hatch	\$ 7.50
<u>Music Books</u>	
Allyn & Bacon	\$ 15.06
Laidlaw Brothers	\$ 2.81
Silver, Burdett & Company	<u>\$ 104.62</u>
Total Expenditures	\$ 404.12

<u>School</u>	<u>Teacher</u>	<u># Pupils</u>
Grades 1&2	Doris Colbath	24 pupils
Grades 3&4	Ada McCrillis	43 pupils
Grades 5&6	Mary Connelly	28 pupils
Grades 7&8	Annie Fuller*	(not noted)
Fuller's Corner	Linda Carver	27 pupils
Webber	Frank Withee*	16 pupils

*Irving Urann of Ellsworth was secured to take Miss Fuller's place in Grades 7 & 8. He was replaced at the end of the Fall Term by Ronello Raymond of Cambridge. Blanche Ogden was secured to take Mr. Withee's place at the Webber School.

Dr. Charles A. Moulton – Report of School Physician:

All schools were visited at least twice. The duties of the School Physician have to do with the health, sanitary condition and comfort of the pupil while at school, and this duty has been performed so far as it has come to my knowledge. My relations with the parents and pupils have been most cordial and I hope will profit to them.

**Pleasant Street (aka Athens Road) Schoolhouse
Mrs. Doris Colbath - Grades 1 & 2
June 8, 1923**



Town Report 1923-1924

Article 13: To see what sum of money the town will vote to raise to shingle and make other repairs on the Webber Schoolhouse.

Article 14: To see what sum of money the town will vote to raise to pay for desks at the Grammar School.

Superintendent of Schools: H. B. Clifford

School Committee: Roger Williams, J. C. Young, Greenfield H. Bowie

School Physician: Dr. Charles A. Moulton

Bill for desks at Grammar School (unpaid)	\$288.15
-------------------------------------------	----------

H. B. Clifford – Superintendent of Schools

Our school census last April was 314, the same as a year ago. We have enrolled 190 pupils in the elementary schools and 100 students are attending the Academy. This is a small increase in the grades and the largest High school we have ever had. The regularity of attendance has been excellent, barring the trouble with Scarlet Fever.

Part of our entertainment funds last year were used to put a good Bible Story book in each of the schools. Hurlbut's "Story of the Bible" was chosen. No use has been made of the book to which anyone could reasonably object and we feel that its influence is very wholesome.

The School Improvement Fund has been chiefly used this year for playground apparatus, such as swings and teeters. This has contributed a great deal to the health and happiness of the children.

Our music work, introduced a year ago, continues to make excellent progress. The lower grades are steadily advancing and the upper grades are learning two and three part music. As these children become the grownup men and women of Hartland, everyone will be glad they were taught to sing in the public schools.

The burning of the Academy building in December was a great loss to us for it was still a fairly satisfactory schoolhouse although crowded. The building was well equipped for a small school. It means a big expense to us for years to come, but there is no way of avoiding the issue.

Teachers

Elsie Emery	Mary Connelly	Ada McCrillis	Ella Getchell
Doris Colbath	Linda Carver	Gertrude Davis	Blanche Ogden
Ronello Raymond			

Dr. Charles A. Moulton – Report of School Physician:

The school property is in a very good sanitary condition, safe and comfortable. The teachers and pupils take an interest in making the school rooms pleasant with pictures and other interesting displays. I need not speak, of the great loss to our town in the burning of the Hartland Academy on December 7 but we are going to build a better one with modern facilities for physical training which will give the girls an equal chance with the boys.

Town Report 1924-1925

Article 36: To see if the town will raise a sum of money to drill a well at Fuller's Corner Schoolhouse.

Superintendent of Schools: H. B. Clifford

School Committee: Roger Williams, J. C. Young, A. A. Marr

School Physician: Dr. Charles A. Moulton (*Annual Salary now at \$75*)

School Related Money Raised by Town

Repairs on Webber Schoolhouse	\$200.00
-------------------------------	----------

Expended to:

A. R. Burton & Son, material	\$124.50
Albert B. Deering, labor	<u>\$ 75.00</u>
Total	\$199.50

Desks for Grammar School	\$525.00
<u>Expended to:</u>	
Theodore Kundtz Company	\$288.15
New Building Fund	<u>\$235.20</u>
Total	\$523.35

Music Supervisor	\$400.00
------------------	----------

Income

Rent of Starbird Schoolhouse	\$ 11.00
Railroad (damage to desks)	\$ 5.00

H. B. Clifford – Superintendent of Schools

I am very glad to report that in my opinion the progress being made in our six elementary schools is the best yet. While we have always had excellent teaching in most of our schools, this has often been offset by poor work in some particular case. Each school is efficient this year.

I have realized more with each year the value of our music work. It seems to me from numerous comments which I hear that our citizens generally entertain the same feeling. Our Music Supervisor this year is Doris Harlow of Mexico. She receives a salary of \$950 of which our town pays \$380. She combines the qualities of a true musician with those of a real school teacher. The ability and cooperative spirit of our own teachers have made it possible for her to advance our pupils rapidly.

The only important repair item this year has been the work on the Webber Schoolhouse. Shingling, painting, a steel ceiling and other items have made a different building which is neat and attractive. This has been partly responsible for the much better progress which the children are making educationally.

The School Census in April showed 353 young people between the ages of 5 and 21 reside in the town as compared with 314 the previous year. This gives a total of 210 pupils, the largest we have ever had. The teachers and enrollment are as follows:

Grades 1&2	Doris Colbath	49 pupils
Grades 3&4	Edna Lenfest	34 pupils
Grades 5&6	Mary Connelly	44 pupils
Grades 7&8	Elsie Emery	47 pupils
Fuller's Corner	Gertrude Davis	26 pupils
Webber	Linda Carver	10 pupils

Dr. Charles A. Moulton – Report of School Physician:

Dr. Moulton provided his usual detailed report but gave no general summary.

Town Report 1925-1926

Article 43: To see if the town will vote to authorize the Superintending School Committee to continue the Webber School, should it become automatically closed, if in their judgment it seems best to do so.

Superintendent of Schools: H. B. Clifford (*thru June 2, 1925*); Frederick M. Nickerson

School Committee: Roger Williams, A. A. Marr, Claire I. Currie

School Physician: Dr. Charles A. Moulton (*Annual Salary now at \$100*)

Income

Rent of Starbird Schoolhouse	\$ 10.00
------------------------------	----------

Frederick M. Nickerson – Superintendent of Schools

Six teaching positions are being maintained during this year with an aggregate enrollment of 212 children. Our teachers are well known to you and need no comments from me, but I wish to say that they are faithful and painstaking in their work, and I believe everyone is striving to do her best for the children under her care.

The census of last April found 349 children, 188 boys and 161 girls, from the age of 5 to 20 inclusive. Of these 193 are in the above named schools, 53 are in secondary schools.

In general the attendance has been good, only one family causing us any trouble. Some loss in attendance was caused by the prevalence of chicken pox during the earlier part of the year.

The music program is being carried out with a good degree of success and of satisfaction to me. Our Music Director Doris Harlow is much interested in her work, and very desirous that it shall be as productive of good results as she can make it.

Only minor repairs have been made this year. The heating plant in Pleasant Street School has not satisfactorily warmed the rooms, and much complaint has come to me about it. I recommend that some action be taken to try to obviate the trouble.

Grades 1&2	Nina F. Steeves	42 pupils
Grades 3&4	Linda B. Carver	45 pupils
Grades 5&6	Mary A. Connolly	43 pupils
Grades 7&8	Fausta M. Howes	43 pupils
Fuller's Corner	Gertrude V. Davis	31 pupils
Webber	Katheryn Griffith	8 pupils

Dr. Charles A. Moulton – Report of School Physician:

I found an excellent degree of school spirit and an evident desire to learn the game of health and to be tidy and well. Much improvement was noted in the care of the teeth and in personal appearance. The condition of the schoolhouses and grounds are about the same as last year. Some complaint has been made of the crowded condition of the Pleasant Street school building and also that the heating plant is not adequate.

The teachers have given considerable attention in brightening up the rooms and blank walls with products of their school activities. Many specimens contributed by the pupils are quite meritorious.

Town Report 1926-1927

Article 15: To see if the town will vote to authorize the Superintending School Committee to continue the Webber School should it become automatically closed, if in their judgment it seems best to do so.

Superintendent of Schools: Frederick M. Nickerson

School Committee: A. A. Marr, Claire I. Currie, Mrs. C. O. Brown

School Physician: Dr. Charles A. Moulton

Frederick M. Nickerson – Superintendent of Schools

Schools were opened in the fall with six teaching positions. After two weeks, at the request of the school officials of Pittsfield, the Bean's Corner School was opened and the children of that neighborhood were transferred from Fuller's Corner school to that school. Hartland has paid toward the support of Bean's Corner School what it had contracted to pay for conveyance to Fuller's Corner school. Mr. Moses Cox conveyed to Fuller's Corner during the first two weeks of the fall term; after that the children attended Bean's Corner School.

Because of the illness of our Music Supervisor Miss Harlow the course in music has been slightly broken into, and we have not asked her to give a report on it. We were very fortunate in getting Miss Rogers, of Pittsfield, to take Miss Harlow's place for the winter term. The work is going along very nicely.

The census of last April found 358 children between the ages of 5 and 20 inclusive; 189 boys and 169 girls. Of these, 210 are in the below named schools and 51 are in the secondary school. In general the attendance has been good. Our schools have been free from contagious diseases and the health of the children has been remarkably good.

Some changes have been made in the heating equipment in the Athens Street School and the rooms now warm up quite well in not too extremely cold weather. We advise building a vestibule over the landing to the fire escape. This will protect this exit from the cold winds and make the upper room warmer. Other than these only minor repairs have been made. We think it might be well to paint the Fuller's Corner Schoolhouse this year.

Grades 1&2	Nina Steeves	66 pupils
Grades 3&4	Ella Getchell	47 pupils
Grades 5&6	Mary Connolly	37 pupils
Grades 7&8	Fausta Howes	46 pupils
Fuller's Corner	Gertrude Davis	22 pupils
Webber	Gertrude Russell	8 pupils

Dr. Charles A. Moulton – Report of School Physician:

The following is my report of the physical examination of the pupils of the Town of Hartland.

Number examined: Boys – 145; Girls – 158; Total = 303

Number with 100 per cent physical rank = 82

Number reported for professional advice = 66

Defects found as follows:

Care of teeth = 89

Vision = 30

Hearing = 14

Teeth = 54

Throats = 34

Tonsils = 83

Adenoids = 68

Skin = 5

Underweight = 59

Pulse = 49

General condition = 15

Average physical rank = 97.8

Town Report 1927-1928

Article 15: To see if the town will vote to authorize the Superintending School Committee to continue the Webber School, should it become automatically closed, if in their judgment it seems best to do so.

Article 48: To see if the town, will vote to sell whatever right it has in the real estate conveyed by James Church to the inhabitants of School District No. 4 (*former Church's Corner School*) in the town of Hartland and allowing the chairman of the board of selectmen to convey the same by quit claim deed.

Superintendent of Schools: Frederick M. Nickerson

School Committee: Claire I. Currie, Grace Webb, Frank L. Griffith

School Physician: Dr. Charles A. Moulton

Frederick M. Nickerson – Superintendent of Schools

This was an enrollment of 204 pupils. There are now enrolled in the same schools 221 pupils. Generally speaking the attendance has been good. Because of the scarlet fever trouble, a few families fearing that their children might contract the disease have kept them out of school some of the time.

The census of last April found 352 children from 5 to 20 years of age, inclusive, in the town; 180 boys and 172 girls. Of these 204 are registered in the above named schools, 39 are in secondary schools, and several are in other institutions of learning.

The music work has been directed by Miss Grace Rogers of Pittsfield. The orchestra work is progressing well. The piano class work is going along finely with 37 in the class. Miss Rogers is a music teacher of broad experience and knows how school music should be done. If it can be brought about, I think it would be an excellent move for this town to unite with Palmyra and St. Albans to employ a music teacher whose work shall be divided among the three towns.

I think we have a corps of teachers whose services we should desire to retain. They are very conscientious, painstaking, hardworking, efficient teachers, and I specially recommend them for future service.

Our school physician needs no words of comment or commendation from me; we all know him for his excellent worth and for his special interest in our school children.

I further recommend that a new shed be attached to the Webber schoolhouse and that toilets be connected with the schoolroom. Chemical toilets are very satisfactory when properly installed and cared for. The Fuller's Corner schoolhouse is in need of paint, and the Athens Street School house would stand a good painting all right.

The following conveyance teams have been maintained:

W. A. Chipman to the Village Schools for \$25.00 a week

W. A. Peterson to the Webber School for \$7.00 a week

Bruce Hillman to the Fuller's Corner School for \$10.00 a week

Moses Cox to the Fuller's Corner School for \$5.00 a week

Mrs. E. E. Davis to the Village Schools for \$5.00 a week

In all, thirty-four children have been furnished with conveyance privileges to schools.

Grades 1&2	Nina Steeves	58 pupils w/ Lula M. Buzzell, Assistant
Grades 3&4	Ella Getchell	29 pupils
Grades 5&6	Mary Connolly	41 pupils
Grades 7&8	Fausta Howes	38 pupils
Fuller's Corner	Edna Estes	22 pupils
Webber	Gertrude Russell	16 pupils

Dr. Charles A. Moulton – Report of School Physician:

Owing to an epidemic of mild Scarlet Fever in the village, several visits have been made to these schools. It was considered best to close the Pleasant Street School early in the epidemic for one week. Later all grade schools were closed for two weeks, hoping, thereby, that the unknown source of the disease would clear up. The exposed rooms and books were properly treated and schools again started up with one family in quarantine. Since then one boy from the Pleasant Street School has been reported with the fever making now two families in quarantine.

Your officers have been diligent in attempting to stamp out this disease and have had, for the most part, the hearty cooperation of the people. But, owing to the dread of quarantine or otherwise, some may have been a little careless. Any willful neglect to report communicable diseases; is liable under the law.

Town Report 1928-1929

Article 15: To see if the town will vote to authorize the Superintending School Committee to continue Webber School, should it become automatically closed, if in their judgement it seems best to do so.

Article 43: To see if the town will vote to raise money to provide for the services of a Public Health Nurse.

Article 48: To see if the town will vote to unite with Palmyra and St. Albans to employ a Music Teacher.

Superintendent of Schools: Frederick M. Nickerson (*through June 9, 1928*); Perry F. Shibles
School Committee: Grace Webb, Frank L. Griffith, Mrs. Annie (*Fuller*) Linn
School Physician: Dr. Charles A. Moulton (*Annual Salary now at \$150*)

PUBLIC HEALTH NURSE

Amount raised \$115.00

An article to fund a Public Health Nurse will continue to be supported in future Town Reports as noted above.

Perry F. Shibles – Superintendent of Schools

(Unfortunately, the first page of the Superintendent's Report, page 48, is missing)

A new shed has been attached to the Webber Schoolhouse, also toilets have been connected and the lighting rearranged to comply with state requirements. This completes the remodeling of school buildings in the town of Hartland. Mr. Griffith should be complimented on the cost of the work at the Webber School. The total cost being only \$308.72.

I recommend that the Fuller's Corner and Athens Street Schoolhouses have a coat of paint on the outside and that the Fuller's Corner Schoolhouse roof be shingled.

Miss Grace Rogers of Pittsfield was elected Music Supervisor by the Joint Committee of the School Union. Miss Roger's work has been satisfactory, and it is hoped that it will be possible to send both, the Academy and Grammar School Orchestras to Lewiston this coming May.

Teachers

Fausta M. Howes	\$828.00
Mary A. Connelly	\$828.00
Nina F. Steeves	\$828.00
Ella B. Getchell	\$828.00
Julia Libby	\$588.00
Edna D. Estes	\$414.00
Ruth M. Hatfield	\$348.00
Lucy A. Burton	\$345.00
Gertrude E. Russell	\$252.00
<u>Luella M. Bunker</u>	<u>\$ 90.00</u>
Total	\$5,349.00

Dr. Charles A. Moulton – Report of School Physician:

I found, as last year, the physical condition of the school property to be satisfactory. The scholars were quite neat and tidy and the teachers much interested in their physical welfare. A few reports from the

teachers were received and many pupils were sent to the office for personal inspection and health certificates. It seems to me an annual health program given in some central place in the town where each school could contribute its share would be interesting and instructive to the pupils and community. The Maine Public Health Association stands ready to assist in any way it can.

Town Report 1929-1930

Article 15: To see if the town will vote to authorize the Superintending School Committee to continue Webber School, should it become automatically closed, if in their judgement it seems best to do so.

Superintendent of Schools: Perry F. Shibles

School Committee: Frank L. Griffith, Mrs. Annie (*Fuller*) Linn, Mrs. Maud Carr

School Physician: Dr. Charles A. Moulton

Somerset County Public Health Nurse: Miss Emma Robinson

Perry F. Shibles – Superintendent of Schools

The school census last April was 326 of 167 boys and 159 girls. Of this number 201 are enrolled in the Elementary Schools. With 2 tuition pupils attending the Union School at Corson's Corner and 58 students attending the Academy, we have a total 261 attending Elementary and Secondary Schools.

The attendance in the schools has been very satisfactory. Mumps were reported in Mrs. Connelly's room about the fifth week of the winter term, but due to a complete exposure of practically all pupils, it was thought best to continue schools as long as the number out continue small.

I believe that the ruling made by the S. S. Committee asking that children be 5 years old the 1st of April, prior to entering school the following September, is going to give a great advantage to both schools and pupils. This makes the youngest child that would enter 5-1/2 years of age, and in most cases he will be stronger and capable of doing a better grade of work, the first year. This tends to give confidence to the child and his interest in school work will be greater.

On the other hand the labor from the 16 year old H. S. graduate is not needed as much today as it was 20 years ago. Too, we can expect and do get better work from older and more mature students. I thank the parents for their cooperation with this ruling in the past and solicit it from others in the future.

'Time' has been, and is today, the cry of the rural school teacher, with so many grades to teach.

1. She has not the time to give to each pupil the individual help needed.
2. Class periods are only 8 to 10 minutes, which does not allow time to check the work and give proper assignments.
3. In order to hear each class during the day, the teacher becomes not a teacher, but a hearer of lessons.

In order to overcome this condition we are slowly introducing a program of supervised study, where instead of having classes every day, in arithmetic, for example, the teacher takes the periods for arithmetic classes and gives to each pupil individual help and checks the work for understanding and application of the rules in the lesson. By this method the pupil receives help when it is most desired, instead of after one, two or three other classes have recited and his interest in the problem has ceased.

The music in the grades has progressed very well (*with Grace Rogers*).

I trust that Miss Emma Robinson's work was beneficial to those whom she visited. Miss Robinson is the County Public Health Nurse of Somerset County. She spent two days in Hartland.

The Fuller's Corner Schoolhouse has been painted inside and out. The Pleasant Street building has been painted outside. The cost for painting both buildings outside was \$200.00. New seats will be bought for Fuller's Corner School and installed during the spring term.

Teachers, Assistants and/or Substitutes

Mary A. Connelly	Ruth M. Hatfield	Edna D. Estes	Nina F. Steeves
Ella B. Getchell	Fausta M. Howes	Julia Libby	Ada McCrillis
Marie Hogan	Bertha Corliss	Evelyne Viles	Grace Griffith
Marguerite Gould			

Dr. Charles A. Moulton – Report of School Physician:

There were twelve less pupils examined this year and 113 less physical defects found. A marked improvement in mouth conditions and weight was noticed.

Town Report 1930-1931

Article 16: To see if the town will vote to close the Webber School as recommended by the Superintending School Committee.

Article 18: To see if the town will vote to instruct the Superintending School Committee to buy a school transport chassis.

Article 19: To see if the town will vote to instruct the Selectmen to sell the Starbird and Bean's Corner Schoolhouses.

Superintendent of Schools: Perry F. Shibles

School Committee: Frank L. Griffith, Mrs. Annie (*Fuller*) Linn, Mrs. Maud Carr

School Physician: Dr. Charles A. Moulton

Somerset County Public Health Nurse: Miss Emma Robinson

Perry F. Shibles – Superintendent of Schools

The school census last April was 333 at 166 boys and 167 girls. There are 211 elementary pupils enrolled in the schools of the town, and 5 attending the Corson's Corner Union School in Athens for a total of 216 elementary pupils. There are 55 town students attending the Academy, making a total of 271 Elementary and Secondary School students.

The epidemic of measles at the beginning of the fall term interfered with the progress of the school work to quite an extent. At the present time the attendance is very high and the grade of work being done very satisfactory.

The supervised study plan of work has been continued in the upper grades in all of the elementary schools. We feel that from the results obtained in the grades and those of the freshmen class in the Academy it is a workable plan. It places the pupils more on their own resources, under careful teacher guidance. The study period is long enough, so that the pupils learn and see for themselves the need of concentration. After several years of this work in the grades, we feel that the pupils are at least, going to know how to study when they enter high school.

The music in the grades made good progress and the Grammar School Orchestra had a successful year.

Dr. Moulton's work in the schools as School Physician has been very carefully carried out. His yearly examination and reports are of greatest importance to our school system. Conditions, unknown to parents, are found, reported and corrected, which otherwise might have resulted in a serious handicap to the child so afflicted. Mr. Albert Deering's fine janitor work in the Village Schools speaks for itself and needs no further comment from me.

New arithmetic books for all grades have been bought and furnished and new geographies for Grades 6 and 7. A new method of reading is being tried out with the Sub-Primary of the Pleasant Street School, and books have been furnished for that grade. I recommend that new English books be bought next year.

Repairs were not as extensive as in years past. New individual chair desks have been bought and installed in the Fuller's Corner School. These add to the appearance of the room as well as to the comforts of the children. The State gave a special amount of \$100 toward these desks.

Paid Frank L. Griffith; screens for Pleasant Street and Fuller's Corner Schoolhouses\$200.00

The Superintending School Committee voted to close the Webber School on January 10, 1931 and transport the pupils to the Village Schools. The Webber School was closed on account of cost of maintenance and for the added advantages of the Village schools. Roads being kept open through the winter have made school conveyance an easier problem than in the past.

Rooms in the Pleasant Street School building are crowded beyond their capacity. To take care of this condition, the S. S. Committee and I recommended, and I believe it is approved by a number of the Academy Trustees, that the Eighth Grade be moved into an upstairs room of the Academy.

This will arrange the grades as follows:

Pleasant Street School

Primary & Grade 1

Grade 2 & Grade 3

Intermediate and Grammar Rooms of the Academy

Grade 4 & Grade 5

Grade 6 & Grade 7

Teachers, Assistants and/or Substitutes

Ada C. McCrillis \$ 828.00

Mary A. Connelly \$ 828.00

Nina F. Steeves \$ 828.00

Ella B. Getchell \$ 828.00

Grace Griffith	\$ 678.80
Audrey Annis	\$ 412.00
Ruth Hatfield	\$ 320.00
Geneva Merrill	\$ 279.00
Marguerite Gould	\$ 276.00
<u>Mrs. C. H. Church</u>	<u>\$ 15.00</u>
Total	\$5292.80

Dr. Charles A. Moulton – Report of School Physician:

During the summer vacation and early fall session an extensive epidemic of measles was prevalent. Nearly every susceptible pupil was ill with this disease. Also many cases of mumps disturbed the spring term, so that these two diseases will not find many victims in the schools for a few years at least. Very few skin diseases are found at the beginning of the fall term when the inspection is made, but later there seems to develop cases of impetigo, a contagious skin disease. It has been found necessary to exclude some of these from school during treatment. Otherwise, absences on account of ill health have been about normal.

Town Report 1931-1932

Art. 41. To see if the town will vote to have the bus go to the door to get and transport the school children of Hartland to school.

Superintendent of Schools: Perry F. Shibles

School Committee: Frank L. Griffith, Mrs. Annie (*Fuller*) Linn, Merrill A. Moore

School Physician: Dr. Charles A. Moulton

Somerset County Public Health Nurse: Miss Emma Robinson

Rent of Webber Schoolhouse (Clyde Martin)	\$ 16.00
Sale of Bean's Corner Schoolhouse	\$100.00
Purchase of School Bus	\$500.00

Perry F. Shibles – Superintendent of Schools

The school census April 1, 1931 was 330. There are 208 elementary pupils enrolled in the schools of the town and 6 attending the Corson's Corner Union School in Athens. There are 59 town students attending the Academy, making a total of 273.

With the exception of the Flu the past three weeks, the health of the school children has been remarkable for the past year. The grade of work done by your boys and girls has been very satisfactory. The citizens should, and I believe do, appreciate the opportunities that they are giving their children for an education under a very efficient and experienced force of Elementary teachers.

Due to the number of pupils in Grade 4 and 5, a helping teacher has been employed for part of the afternoon period. A new State course of study for elementary schools is being used this year. This is a great help to superintendents and teachers, and marks another step of advancement in our elementary

school system. Many changes have been made to meet the requirements. Geography and History courses are being combined and taught by project method.

The music in the grades and Academy has made excellent progress the past year, and the students' cooperation has been excellent. The grades four, five, six and eight of the Rural School have made rapid progress as a class for two and three part singing. The lower grades being similar to the Town School grades.

By moving the Eighth Grade into an upstairs room of the Academy and having only two grades in the other elementary rooms, the congestion in the Pleasant Street building has been taken care of.

The cost for repairs on school buildings has been small during the past year. A new cupboard has been built for the Fuller's Corner School. Chairs have been bought for the school orchestras. There is a balance in this account ample to take care of repairs for the coming year.

Teachers, Assistants and/or Substitutes

Ada C. McCrillis	Mary A. Connelly	Nina F. Steeves	Ella B. Getchell
Grace A. Griffith	Audrey A. Annis	Geneva Merrill	James F. Fuller
Pearl Church			

Dr. Charles A. Moulton – Report of School Physician:

The general health of the pupils has been above the average. Only one rural schoolhouse and grounds examined, which was in good condition. The rest of the used school property was neat, well janitored and in excellent condition.

Number of Pupils Registered	314
Number of Pupils Examined	307
Number that have had Mumps	151
Number that have had Measles	208
Number that have had Scarlet Fever	53
Number that have had Whooping Cough	208
Number that have had Chicken Pox	153
Number vaccinated	25

Town Report 1932-1933

Article 36: To see if the town will vote to have the North Hartland school bus go to Corson's Corner for the balance of the North Hartland scholars instead of paying tuition to the town of Athens.

Article 37: To see if the town will vote to let the transportation of our rural scholars to the lowest bidder.

Superintendent of Schools: Perry F. Shibles (*thru June 30, 1932*); Walter J. Rideout

School Committee: Frank L. Griffith, Merrill A. Moore, Belle Hebb

School Physician: Dr. Charles A. Moulton (*Annual Salary reduced to \$100*)

Somerset County Public Health Nurse: Miss Emma Robinson

Walter J. Rideout – Superintendent of Schools

My service covers the period from July 1 to date. This time has been largely spent in becoming acquainted with the school situation. I have found the schools up to grade with a group of well-trained, experienced teachers who are doing efficient work. This speaks well for the support given by the town and the previous administration of the schools. Good schools do not just happen. They are the product of adequate financial support and wise and careful administration over a long period of years.

No matter how good teachers may be they still may become better by study and training. Your teachers have sought to improve themselves by attendance at the county and state teachers' meetings and also by study in their own local meetings. The Sebasticook Teachers' Club which includes the elementary teachers of this school union has been active.

The committee and superintendent are agreed that costs must be less next year. Fuel, books and supplies and our share of the cost of Coston's Corner school are virtually fixed charges and we can hope to save but little in these items over the very low cost of the present year. Our janitor and conveyance charges have been reasonable but it is probable that some cut can be made in these items. The teachers, as always, are willing to make sacrifices and will accept reasonable cuts. I am convinced, however, that unreasonable cuts would result in the loss of some of our best teachers and our schools cannot afford this loss.

We are faced on the one hand by a demand for lower school appropriations and on the other by a heavy loss in income from the state school fund. We are informed that there will be a probable loss in this fund of at least 20%. This year we received \$2,133.43 from this source. Twenty per cent would mean a loss of over \$425.00. The Commissioner of Education has pointed out that the loss in the state school fund to towns is largely made up by decreased state tax and he urges that towns appropriate this amount in addition to the amount which would otherwise be appropriated.

It is well for us to remember in these times the words of Lady Astor addressed to the people of her native America, "Don't forget your children! Time and again in England we have had to watch carefully so that when we make economies we didn't economize on our children. They must not suffer in this economic crisis. You can always build your roads and bridges. If you neglect your children, you can't build them again."

If in these trying times we lower the efficiency of our schools for a few years we are taking something from the children which can never be replaced. A CHILD CANNOT GROW UP TWICE! I am confident the citizens of this town will want to be fair to their children.

Janitor service is efficient and conveyance to the village is modern, comfortable and satisfactory. The town is fortunate in owning a motor bus: which has already paid for itself and saved considerable conveyance expense besides.

The work of Dr. Moulton, the school physician, is to be highly commended. He is interested in his work and keeps very careful records of the examinations. These routine examinations are very important and their cumulative value is very great. In times like these a town cannot afford, it seems to me, to be without a school physician.

<u>School</u>	<u>Teacher</u>	<u>Wages</u>	<u>Enrollment</u>
Primary & Grade 1	Nina F. Steeves	\$ 21.00	36
Grade 2 & 3	Ella B. Getchell	\$ 21.00	41
Grade 4 & 5	Mary A. Connelly	\$ 21.00	33
Grade 6 & 7	Ada C. McCrillis	\$ 21.00	47
Grade 8	Annie F. Linn	\$ 20.00	23
Fuller's Corner	Audrey A. Annis	\$ 18.00	30

There are six pupils attending the Coston's Corner School in Athens for whom we pay proportionate cost.

Dr. Charles A. Moulton – Report of School Physician:

All the school property was found in good physical condition, neat, and upkeep well provided for. The only rural school in session this year was Fuller's Corner. Special effort is made to improve the play grounds here, thus making it more efficient.

Town Report 1933-1934

Superintendent of Schools: Walter J. Rideout

School Committee: Frank L. Griffith, Merrill A. Moore, Olney Wilbur

School Physician: Dr. Charles A. Moulton

Somerset County Public Health Nurse: Miss Emma Robinson

Walter J. Rideout – Superintendent of Schools

With the beginning of the fall term the children who had been attending Coston's Corner were transferred to the Village school. This was done at a saving to the town and will give the pupils the benefit of larger graded schools.

Music during the present year is under the supervision of Miss Gertrude Thorne, a teacher of broad training and much experience. Under her able supervision the music teaching in the grades is being better correlated and the instrumental and vocal work in the Academy is being developed successfully.

On February 8, the roof of the Pleasant Street School caught fire from a spark and some damage was done to the building. This will be largely covered by insurance. Temporary repairs were made and only one week of school lost. The time of the fire and prompt action by the fire department prevented a much heavier loss. I believe it would be good policy to shingle this roof with fire resisting shingles. The insurance rate would be lowered and the danger of fire from without greatly decreased.

There has been a reduction of expenditures of over \$1100 during the last year. Teacher salaries and janitor service were cut. Less was paid for high school tuition, books and music. Fuel was the only item showing

any substantial increase. However, this is somewhat offset by a larger amount on hand than last year at this time.

The School Committee and Superintendent have considered carefully the probable cost of the schools for the coming year. It is believed that by continued careful economy the schools can be maintained with the same appropriation for common schools as last year, namely, \$4,800.00. At least \$200 should be raised for repairs and \$100 for school physician.

I wish to commend the Selectmen and Treasurer for the efficient way in which they have financed the schools. Not a single payroll has been delayed and, that is certainly a worthwhile achievement. I wish especially to express my appreciation to the teachers who, under somewhat discouraging conditions, have given their best that no child should suffer in his educational opportunity during these trying times. I trust the community may come to understand and appreciate more fully the faithful work of these public servants in whose keeping rests, to such a great extent, the future of our beloved state and nation.

Comparison with last year's table will show that Mrs. Louder, Miss Pelkie and Mrs. Hogan were new teachers in the system. Miss Pelkie resigned at Fuller's Corner in the Fall and Mrs. Hogan was secured to take her place. Both Mrs. Louder and Mrs. Hogan are Normal school graduates with several years of successful experience. The only reason we can command their services at the low wages we pay is because they were located here for the time being and were willing to teach for what we could pay.

<u>School</u>	<u>Teacher</u>	<u>Enrollment</u>
Primary & Grade 1	Nina F. Steeves	35
Grade 2 & 3	Ella B. Getchell	40
Grade 4 & 5	Mary A. Connelly	42
Grade 6 & 7	Ada C. McCrillis	46
Grade 8	Ruth M. Lauder	20
Fuller's Corner	Doris Pelkie/ Evelyn F. Hogan	32

Dr. Charles A. Moulton – Report of School Physician:

It is a great pleasure to examine the pupils. Every respect possible is shown me and they all seem to manifest great interest in the examinations and its results. Most of the suggestions growing out of the examinations have been corrected as far as possible and I believe the pupils are made healthier and happier by having this yearly check-up. The school property remains 100% as last year except the Pleasant Street school building which was recently somewhat damaged by fire and is now undergoing repairs and will soon be ready for occupancy.

Town Report 1934-1935

Although worded differently from previous years, the articles relating to the support of the schools remain consistent to the cause over the decades of Town Meetings.

Article 8: To see if the said inhabitants will vote to raise any sum of money and appropriate the same for common schools, for text books and supplies, lights, telephone, etc. for the ensuing year, or anything relating thereto.

Article 9: To see if said inhabitants will vote to raise any sum of money and appropriate the same for repairs, equipment and insurance on school buildings for the ensuing year.

Article 10: To see if the said inhabitants will vote to raise any sum of money and appropriate the same for the salary of the Superintendent of Schools.

Article 11: To see if the said inhabitants will vote to raise and appropriate any sum of money as salary for Superintending School Committee.

Article 12: To see if the said inhabitants will vote to authorize the Superintending School Committee to contract with Hartland Academy to furnish instruction to high school pupils and to raise any sum of money and appropriate the same for tuition in secondary schools for the ensuing year, or act upon anything relating thereto.

Article 13: To see if the said inhabitants will vote to authorize the Superintending School Committee to employ a School Physician and to raise any sum of money and appropriate the same for such purpose for the ensuing year, or act upon anything relating thereto.

Article 47: To see if the said inhabitants will vote to raise any sum of money and appropriate the same for the services of a Public Health Nurse for the ensuing year.

Superintendent of Schools: Walter J. Rideout

School Committee: Frank L. Griffith, Merrill A. Moore, Olney Wilbur

School Physician: Dr. Charles A. Moulton

Somerset County Public Health Nurse: *(Not Noted)*

Walter J. Rideout – Superintendent of Schools

The enrollment of 218 is three more than for last year. It is surprising how the enrollment in our schools holds up in spite of lessened industrial activity.

Last year the Music Account was combined with the Common School Account since for purposes of the State Department of Education the Music Teacher position is considered to be a regular teacher. Therefore there will be no need for special appropriation article for music. Miss Gertrude Thorne has continued as supervisor of music. The work is being well coordinated and improved in quality steadily.

Through the cooperation of Dr. C. E. Norcross, the pupils of all the schools were given a dental examination last spring. The results showed a somewhat high ratio of defects probably as a result of economic conditions.

A somewhat extensive program of repairs has been undertaken during the past season. The damage to the Pleasant Street building caused by the fire was repaired so as funds permitted. A new roof of fire-resisting material was laid. This will prevent further fires from sparks on the roof. The building should be painted on the outside this coming year.

A new roof of fireproof materials was laid at Fuller's Corner and the interior of the building was painted. Late in the fall an allotment was secured from the FERA for work on this building. The whole building was raised and placed on cedar posts and the yard graded. This has been a great improvement. The excellent cooperation of the selectmen and especially of Dan E. Connelly, Federal Administrator, is greatly appreciated.

Bills now before the Legislature offer substantial hope for the real estate taxpayer and for the equalization of educational opportunity and the support of the same.

There have been two changes in the teaching force during the current year. Mrs. Evelyn Hogan was appointed to the vacancy in the Eighth Grade and Miss Gertrude Davis succeeded her as teacher at Fuller's Corner School.

<u>School</u>	<u>Teacher</u>	<u>Enrollment</u>	<u>Salary</u>
Primary & Grade 1	Nina F. Steeves	44	\$ 684.00
Grade 2 & 3	Ella B. Getchell	36	\$ 684.00
Grade 4 & 5	Mary A. Connelly	43	\$ 684.00
Grade 6 & 7	Ada C. McCrillis	36	\$ 684.00
Grade 8	Evelyn F. Hogan	29	\$ 590.00
Fuller's Corner	Gertrude Davis	30	\$ 352.00
All/Music	Gertrude Thorne	---	\$ 380.00

Pleasant Street (aka Athens Road) Schoolhouse
Mrs. Ella Getchell – Grades 2 & 3
1934-1935



Janitors:

Albert. B. Deering
Emerson Pelkie

Phyllis Ford
Wilfred Cool

Frederick Lander
Norris Deering

Jean Pelkie

Dr. Charles A. Moulton – Report of School Physician:

The Fuller's Corner property has been improved by raising the building and grading around the house. The interior remains the same. The greatest fault is relation of the windows to the requirements of the room. The school property of the town is in excellent physical as well as sanitary condition. No serious amount of illness or other health disturbing conditions noted during the year. The health inspections have been mostly of a chronic nature. The pupils show an active interest in being tidy and healthy thereby reflecting an active interest at home.

Town Report 1935-1936

An Article for a Public Health Nurse is not noted in this year's Town Report.

Superintendent of Schools: Walter J. Rideout

School Committee: Frank L. Griffith, Merrill A. Moore, Olney Wilbur

School Physician: Dr. Charles A. Moulton

Somerset County Public Health Nurse: *(Not Noted)*

Walter J. Rideout – Superintendent of Schools

There have been no changes in the teaching force of the elementary schools during the past year. The enrollment for the current school year is 195 which is somewhat less than last year.

During the fall term it became evident that new equipment must be provided for the conveyance of pupils. After correspondence and personal conference with the Commissioner of Education and his assistant a solution to the problem was worked out. A new chassis and bus body for use on the West Hartland and Pittsfield Avenue routes were purchased. The town paid for the chassis in full minus the federal tax which was remitted to the municipality. The State will allow \$500 to be paid during the coming year out of a special fund available for such purposes toward payment for the bus body. The new bus has a longer wheelbase and considerable larger capacity than the old one.

The chassis of the old bus was sold to William McLellan to be used on the North Hartland Route. The use of the bus body was granted to him in consideration of the acceptance of a lower rate of compensation than would otherwise have been the case, an arrangement which results advantageously to both parties.

Purchase of the new bus at this time will result in the saving of several hundred dollars to the town over a short period of years and at the same time greatly improves the quality of conveyance service provided.

The increased capacity of the conveyances has made possible the conveyance on all routes of a large number of Academy pupils some of whom would have been unable to have continued in school otherwise. This is a special service which the School Department is glad to be able to render. It can be continued as long as it does not interfere with the conveyance of elementary pupils for whom the conveyance is primarily provided.

The Committee and Superintendent have studied the finances of the schools carefully and make the following recommendations for appropriations for the elementary schools for the ensuing municipal year:

Common Schools	\$5,000.00
Repairs and Insurance	\$ 400.00
Superintendence	\$ 400.00
School Committee	\$ 41.25
School Physician	\$ 100.00

These amounts recommended total \$200.00 less than was raised last year and several hundred dollars less than three years ago. Owing to a school system which is largely consolidated it is possible for the town, with careful management, to maintain good schools at a relatively low cost.

During the summer the exterior of the Pleasant Street Schoolhouse was painted and other minor repairs were made. In general the several school buildings are now in good repair.

I wish to express my appreciation to the School Committee, Selectmen, Treasurer and School Physician for their cooperation in maintaining the efficiency of the schools; to Rae Randlett for seeing to it that the streets and highways have been open early in the morning during this hard winter; to the teachers for their faithful work and to pupils and parents, for their cooperation.

<u>School</u>	<u>Teacher</u>
Primary & Grade 1	Nina F. Steeves
Grade 2 & 3	Ella B. Getchell
Grade 4 & 5	Mary A. Connelly
Grade 6 & 7	Ada C. McCrillis
Grade 8	Evelyn F. Hogan
Fuller's Corner	Gertrude Davis
All/Music	Gertrude Thorne

Dr. Charles A. Moulton – Report of School Physician:

The same excellent care of school property is manifest as in past years. We hope some time to see a better driveway, both summer and winter, from the main road to the Academy building. No accidents and but few minor ailments have marred the smooth running of your excellent schools.

Town Report 1936-1937

Superintendent of Schools: Walter J. Rideout

School Committee: Frank L. Griffith, Merrill A. Moore, Olney Wilbur

School Physician: Dr. Charles A. Moulton (*Dr. Paul R. Briggs moves to Hartland*)

Walter J. Rideout – Superintendent of Schools

There has been an increase in enrollment in the elementary schools during the current year of thirty pupils or better than a 15% increase over last school year. This has made a serious problem for us and one that is likely to be increasingly troublesome. With renewed industrial activity it is safe to assume that there will be a steady increase in enrollment from year to year. Sooner or later, and if the same percentage of

increase continues for a year or two it will certainly be sooner, more room must be found to house our boys and girls.

Fortunately the rooms at the Primary School are large and the children small. Otherwise it would have been impossible to have taken care of them all with the existing facilities. As it is, the Sub-Primary and First Grade with an enrollment of 61 pupils has taxed that large room. This room has been seriously overcrowded. In order to meet the situation at all the Sub-primary children have been dismissed at recess in both morning and afternoon. That has still left a substantial number of children who come on school buses who have to be under the supervision of the teacher although her teaching time after recess is largely devoted to the First Grade. Mrs. Steeves has done very well with a difficult situation and is to be commended for her willingness to make the best of it.

The conveyance situation has been excellent this past year. At the beginning of the fall term the Academy placed in service a modern school bus. Grade children on the Pittsfield road have been conveyed on this bus. The green bus has conveyed the children from North Hartland and the orange bus has conveyed the West Hartland pupils. By this arrangement children have not had to leave their homes unduly early in the morning and have been returned in good season at night. There has been no waiting at the school for long periods either night or morning. All Academy pupils on or adjacent to established conveyance routes in town have been conveyed free of charge, a service which has been well patronized and I trust appreciated by both pupils and parents. A high grade of conveyance service has been supplied at low cost to the town. The chassis of the new bus which went into service in January of 1936 was paid for out of 1935 funds. The body has been paid for during the current year. The total cost was \$621 toward which the State Department of Education made a contribution of \$500 from the Special Project Division of the Equalization Fund. The net cost to the town for the body was \$121.

I would again suggest that the Eighth Grade be administered with the Academy. Such an arrangement would make for flexibility and economy both in the use of the limited classroom space and in the distribution of teacher time.

Repairs this year have been largely minor in nature except for the outside painting of the Fuller's Corner building. New swings and seesaws were added at each school.

The new bill to equalize educational costs in Maine is now before the Legislature. It provides that the State will pay one-half the cost of a minimum program. Had this bill been in operation during the past school year Hartland would have received \$4,779.00 from the State instead of \$1,654.15 which would have made possible a substantial decrease in the school appropriation and a consequent reduction of the local tax rate.

It is fitting that mention should be made of the passing of Frank L. Griffith long a member of the School Committee. Mr. Griffith from his long acquaintance with and knowledge of the school situation was a valuable member of your Committee and gave freely of his time and advice. His uncontested re-election last March showed the appreciation of his fellow citizens for his faithful services to the community. Mr. Lloyd V. Cookson was appointed to fill Mr. Griffith's place until town meeting.

Primary and Grade 1	Nina F. Steeves	61
Grade 2 and Grade 3	Ella B. Getchell	37
Grade 4 and Grade 5	Mary A. Connelly	36
Grade 6 and Grade 7	Ada C. McCrillis	46
Grade 8	Evelyn F. Hogan	23
Fuller's Corner	Gertrude Davis	22
All/Music	Gertrude Thorne	All
Total		225

Dr. Charles A. Moulton – Report of School Physician:

Number who have had Mumps	186
Number who have had Measles	270
Number who have had Scarlet Fever	32
Number who have had Chicken Pox	220
Number who have had Whooping Cough	271
Number who have been Vaccinated	26

Town Report 1937-1938

Art. 48. To see if the town will vote to raise and appropriate the sum of \$93.00 for School Nursing in the Town of Hartland, to be expended under the auspices of the Bureau of Health of the State Department of Health and Welfare.

Superintendent of Schools: Walter J. Rideout

School Committee: Merrill A. Moore (1yr), Lloyd V. Cookson (2yrs), Eugene Williamson (3yrs)

Members are now elected for 3 year terms with their remaining term noted above.

School Physician: Dr. Charles A. Moulton

Walter J. Rideout – Superintendent of Schools

The evening of February 10 a fire was discovered in the west wing of the Academy building. Prompt and efficient action by the fire company aided by a substantial brick fire wall confined the fire to that wing. The damage in the rest of the building was by smoke. Through the kindness of the Methodist Church the vestry of that building was made available for the Fourth and Fifth grades. Good progress has been made on repairs and before many weeks the damaged portion will be ready for occupancy.

There has been a steady and large decrease in the proportion of school expense met by State funds. It is to be hoped that before many years the State's rightful obligation in providing a minimum educational program will not only be recognized but will be properly met.

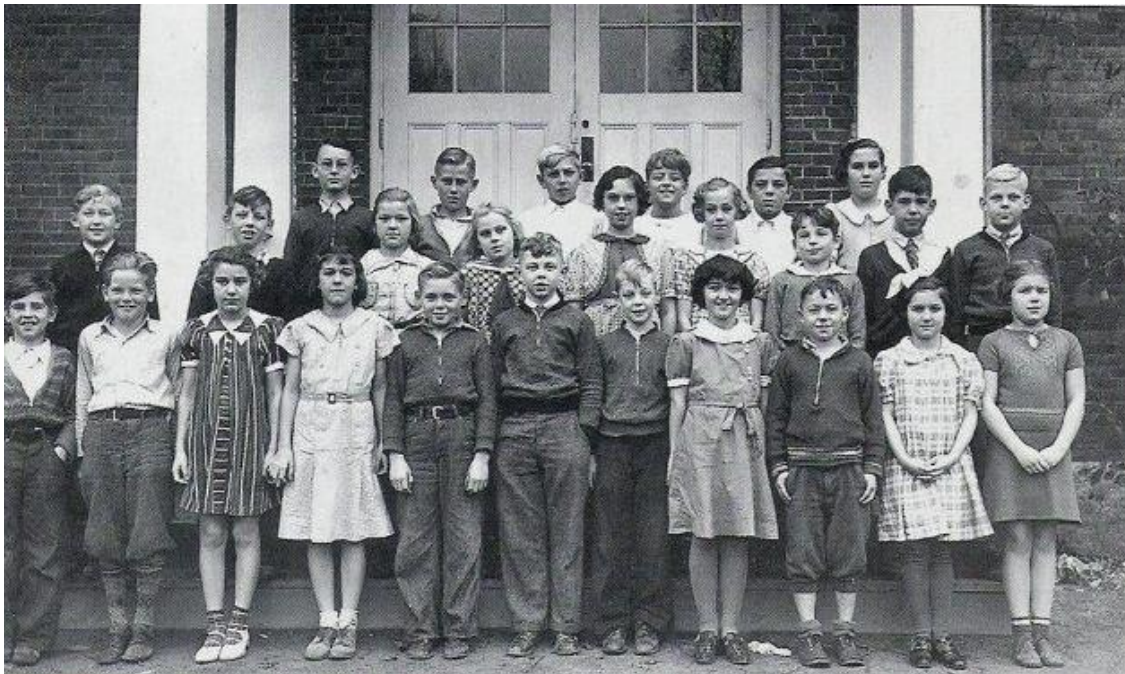
During the last five years the total amounts expended by the school department have, as the result of very careful planning and supervision, varied less than \$300 on the common school account which includes teachers' salaries, janitor, conveyance, fuel, books and supplies and this in the face of steadily rising costs.

The current year a new arrangement was made with Hartland Academy whereby the Eighth Grade has been administered as a part of the Academy organization. The group has been known as the Sub-Freshman Class. It has had its own home room but the teaching has been departmental, that is, English has been taught by the English teacher, mathematics by the mathematics teacher, etc. This form of teaching is considered more profitable in Grades Seven and Eight than where all subjects are taught by one teacher. The town pays a lump sum to the Academy for this service equivalent to the cost of an Eighth Grade teacher. This arrangement was necessary in order to provide adequate room and sufficient teaching force for the Academy pupils and has been of mutual advantage both to the town and the Academy.

Some changes were necessitated in the elementary schools. Mrs. Evelyn Hogan was transferred from Grade 8 to Grade 2 and Grade 3 to take the place of Mrs. Ella Getchell who resigned. The other teaching assignments have been the same as last year. Mrs. Mary Smart of Dexter has substituted as Music Supervisor for Miss Gertrude Thorne who expects to resume her work soon.

Primary and Grade 1	Nina F. Steeves	50
Grade 2 and Grade 3	Evelyn F. Hogan	44
Grade 4 and Grade 5	Mary A. Connelly	30
Grade 6 and Grade 7	Ada C. McCrillis	40
Fuller's Corner	Gertrude Davis	25
All/Music	Mary Smart	All
Total		189
(Grade 8/Sub-Freshman	Academy	26)

**Hartland Common School Students
attending classes at Hartland Academy
1935-1936**



Dr. Charles A. Moulton – Report of School Physician:

Whole number boys registered	172
Whole number girls registered	<u>178</u>
Total	350

Whole number boys examined	160
Whole number girls examined	<u>169</u>
Total	329

Town Report 1938-1939

The general articles for support of the Common Schools remain basically the same with only changes in the appropriation amounts from years past.

Article 12: To see if the town will vote to raise and appropriate the sum of \$5,200.00, more or less for elementary schools, including teachers' wages, fuel, janitors' services, conveyance, textbooks, reference books and school supplies.

Article 13: To see if the town will vote to raise and appropriate the sum of \$400.00, more or less, for repairs, equipment and insurance on school buildings, for the ensuing year.

Article 14: To see if the town will vote to raise and appropriate the sum of \$400.00, more or less, for the salary of the Superintendent of Schools, for the ensuing year.

Article 15: To see if the town will vote to raise and appropriate the sum of \$45.00, more or less, for the salary of the Superintending School Committee, for the ensuing year.

Article 16: To see if the town will vote to raise and appropriate the sum of \$2,300.00 more or less, for tuition in Secondary Schools, and instruct and authorize its Superintending School Committee to contract with Hartland Academy, to furnish instruction to its high school pupils, for the ensuing year.

Article 17: To see if the town will vote to authorize its superintending school committee to employ a School Physician, and raise and appropriate the sum of \$100.00, more or less, for this purpose, for the ensuing year.

Superintendent of Schools: William G. Springer

School Committee: Merrill A. Moore, Eugene Williamson, Lloyd V. Cookson

School Physician: Dr. Charles A. Moulton

William G. Springer - Superintendent of Schools

Due to the fact that my acquaintance with the schools is of a comparatively short term, my time has been largely utilized in making a study of the school situation and the method of administration by my predecessor.

The conveyance for the past year has been satisfactory. There are 95 pupils conveyed to the various elementary schools. From this number 69 are transported by the town bus, commonly known as the "Orange Bus." This bus has given very good service although some necessary repairs were made during the early winter.

During the summer a new ceiling was put on at the Fuller's Corner School and the interior was completely refinished. All the desk tops were refinished and a washbowl was installed. Later new shades were purchased for the windows. Complete replacements were made of the swings which were in a hazardous condition.

At the Pleasant Street School 25 desk tops were refinished. New rope was provided for the swings and the flag pole. The water pipes were in such a condition that it was necessary to replace most of the pipes. The fire escape at the Pleasant Street School is unprotected from the drip from the eaves. During the winter this freezes on the steps. Some means will need to be provided to protect the steps from the accumulation of ice and snow.

During the fall term an exhibition of the projects, drawings, and study assignments of the pupils in the elementary grades was displayed in several store windows through the kindness of the merchants. The children have taken an active interest in these activities and have shown remarkable skill and aptitude in drawing and creative work.

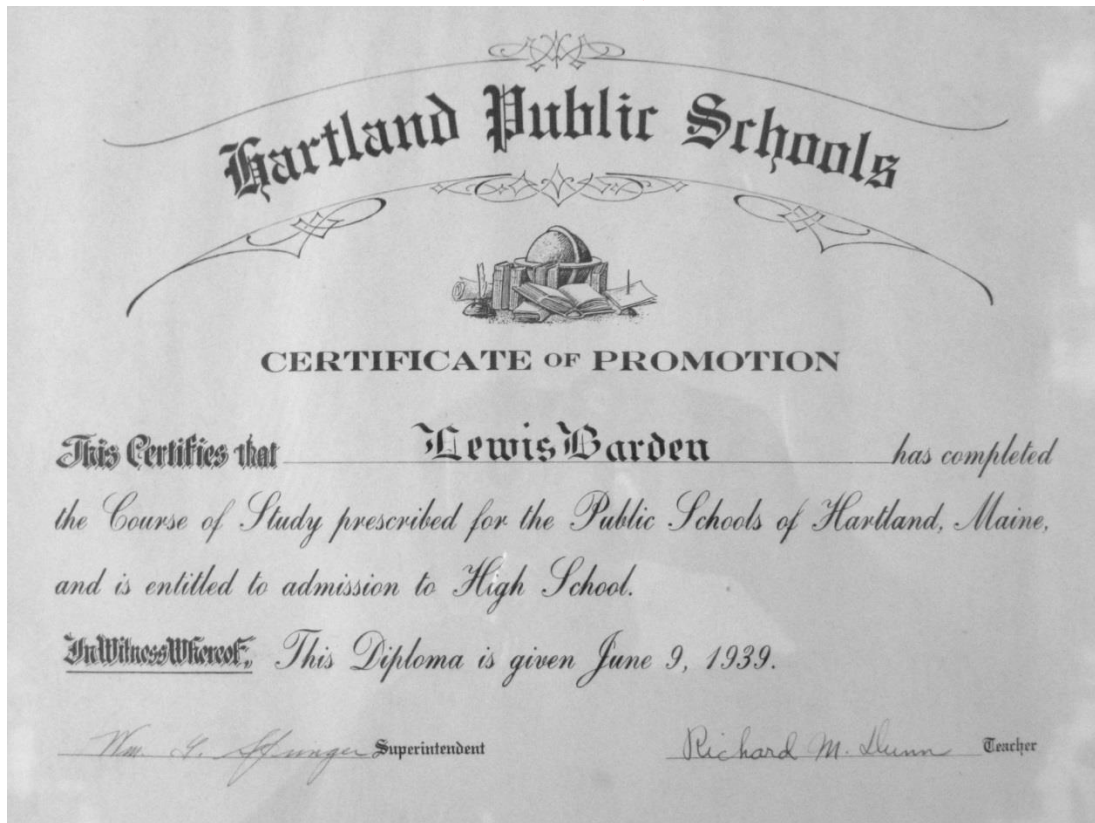
I have found that the teachers and pupils are working harmoniously and that the general morale of the schools is very good. There has been no change in the teaching personnel in the elementary schools this year. Hartland is very fortunate in having such a corps of well trained, conscientious, and loyal teachers. The work in music has been ably carried on as usual under the direction of Miss Gertrude Thorne

It will be noted that the teacher load at the Pleasant Street School is extremely heavy. If ample room were available, this situation could be alleviated by the employment of an additional teacher. In spite of the fact that Mrs. Hogan and Mrs. Steeves have both done remarkably good work with the pupils, I feel that an enrollment of 103 pupils is much too large for only two teachers, particularly in mixed grades.

School	Grades	Teacher	# Pupils
Pleasant Street	Primary and Grade 1	Nina F. Steeves	48
Pleasant Street	Grade 2 and Grade 3	Evelyn F. Hogan	55
Intermediate	Grade 4 and Grade 5	Mary A. Connelly	36
Intermediate	Grade 6 and Grade 7	Ada C. McCrillis	32
Fuller's Corner	Primary thru Grade 7	Gertrude Davis	22
All Schools	Music	Gertrude Thorne	All
Academy	Grade 8/Sub-Freshman	Academy	22

Dr. Charles A. Moulton – Report of School Physician:
(Unfortunately, his report is missing from the digital file)

8th Grade Certificate of Promotion 1939
Lewis H. Barden, Jr



Town Report 1939-1940

Superintendent of Schools: William G. Springer (*thru June 1939*); Harold E. Carson
School Committee: Theodore F. Griffith, Merrill A. Moore, Eugene Williamson
School Physician: Dr. Charles A. Moulton

Harold E. Carson – Superintendent of Schools

This, my first annual report as Superintendent of your schools, will be somewhat different from reports of the past. I propose to devote most of this space to describing conditions of the schools, as I have found them.

The teaching force in the elementary schools is the same as last year, with the exception of Mrs. Ruth Thomas who has been added to the force to lighten the teacher load in the primary grades. I find the teachers working diligently although greatly handicapped by overcrowded conditions.

At the opening of school in September, we found that there were 39 pupils entering the Sub-Primary Class. This number combined with 23 pupils in the First Grade was too many to expect any one teacher to teach. Realizing that a good beginning was essential in the lower grades the committee made arrangements to add another teacher to the force and move the First Grade into a room by themselves, hence the so called Church School. While this arrangement may not be very satisfactory I do feel that

both grades have been able to accomplish much more than could possibly have been done with two teachers occupying the same room.

Looking forward to next September and our present pupils advancing one grade all along the way I see 30 pupils entering the Sub-Primary Grade. This number is a checkup of youngsters that will be five years of age by Sept. 1, 1940. Our present Sub-Primary will be First Grade. Thirty-nine and thirty will make sixty-nine pupils slated for the same room. Personally I can see no other solution than to continue the extra teacher and separate room. As has been true this year it means an increased budget for rent, fuel, janitor, etc.

Overcrowded conditions exist in all rooms this year except Mrs. McCrillis'. The present seventh grade is small in number. Next September as this grade moves to the eighth grade in the Academy, seventeen pupils will move into this room to take their place thus filling all grade rooms to overflowing. While this condition exists we cannot expect teachers to perform miracles and accomplish all that they are expected to accomplish.

It is impossible to know what the future will bring but it is a fact that the present school population is too large for the accommodations. The problem now is to increase accommodations to take care of the pupils. If something is not done we will soon find that our elementary graduates will be poorly trained when they enter high school.

The only solution that I can see is a building large enough to accommodate the first seven grades and adding one more teacher to the present staff. This would also leave the Academy more room which is badly needed. It would add the Seventh Grade' to the Academy making it a six year secondary school, which has many advantages over the four year high school.

Repairs to the fire escape at the Pleasant Street School were completed this past fall. If it is deemed advisable to continue the Church Vestry School next year and if arrangements can be made to use the building, we should install another flush closet. One toilet is not adequate for both boys and girls.

We have asked for an appropriation of \$50.00 for a School Nurse. I have talked this matter over with the school physician, teachers and several parents. It is agreed that a school nurse to do follow up work after the physician has made his examination would do a great deal of good for the majority of pupils. A nurse through home visits or by her contact with such organization as the Red Cross and the various clinics can get a great deal of remedial work done.

It is time to consider the matter of a school bus again. The present 'Orange Bus' is a 1936 model. Naturally, it is reaching the point where it requires, more gas, oil and repairs to keep it in safe operating condition. The question is whether or not the increased operating expenses, including depreciation, make it desirable to operate the same bus another year.

<u>Grade</u>	<u>Teacher</u>	<u>Boys</u>	<u>Girls</u>	<u>Total</u>	<u>School Location</u>
Primary	Nina Steeves	27	12	39	Pleasant Street
1	Ruth Thomas	14	9	23	Church Vestry (<i>Methodist Church</i>)
2 & 3	Evelyn Hogan	25	23	48	Pleasant Street

4 & 5	Mary Connelly	20	27	47	Academy Street
6 & 7	Ada McCrillis	14	13	27	Academy Street
8	Sub-Freshmen	9	15	24	Hartland Academy
Rural	Gertrude Davis	15	10	25	Fullers Corner
All/Music	Gertrude Thorne				All Schools
Totals		124	109	233	

Dr. Charles A. Moulton – Report of School Physician:

Total number boys and girls registered 362

Total number boys and girls examined 344

Report of Public Health Nursing Service

The Public Health Nursing Service covers the nurse supervision of expectant mothers, infants, pre-school and school age children. The report covers this general program and it is for this purpose which we are asking to have money raised to help continue the work by supplementing what is already being paid from State Bureau of Health funds.

The work is carried largely through home visits and child health conferences. These contacts are made for the purpose of giving help in meeting the health needs of the family through advice and demonstration of methods of care in the home. The encouragement of parents in the care of the family is most gratefully received.

Through the nurse's home visits, medical supervision is urged where needed for treatment or correction of defects. The importance of using the proper diet for maintenance of health and normal growth is discussed with families and aid given in planning food budgets. The protection of children with communicable diseases, the protection of others from those who are ill and immunization against certain diseases is stressed.

Whenever possible, child health conferences are held with the local people .making the choice of examining physician and the State Bureau of Health paying for his services. The nurse is always alert to any crippling condition in children and with the consent of the physician, the services of the crippled children clinics, which are held in several sections of the State, are recommended to the family.

As other defects are found, the nurse calls these conditions to the attention of the parents with recommendations to secure advice from physician or dentist regarding care or treatment. In cases where the cost of corrective work cannot be assumed by the family, the nurse endeavors to enlist the interest of groups or agencies to assist in meeting these needs. No Child Health Conference was held in the summer, but we will try to hold several small ones next summer.

Town Report 1940-1941

Article 55: To see what sum of money the town will vote to raise and appropriate for purchase of a School Bus.

Article 57: To see what action the town will take in regard to furnishing extra school room, and raise and appropriate a sufficient sum of money to pay for same, and to act upon anything relating thereto.

Superintendent of Schools: Harold E. Carson

School Committee: Theodore F. Griffith, Merrill A. Moore, Eugene Williamson

School Physician: Dr. Charles A. Moulton

Harold E. Carson – Superintendent of Schools

You will notice in this table below that the enrollment of pupils is on the increase. Year after year as each grade moves ahead the rooms of the upper grade teachers are becoming crowded. The attendance was very good during the fall term but the epidemic of colds has cut the attendance down somewhat during the past seven weeks.

The Church Vestry School was discontinued this year and we could not seem to find any suitable place to house the First Grade. As a compromise measure we decided to have a one session school day for the Sub-Primary and the First Grade children.

As a result we have the First Grade attending the forenoon session and the Sub-Primary in the afternoon. Mrs. Steeves handles both sessions of school with an enrollment of 66 pupils. The orange bus makes a complete run over the bus route at noon taking the First Grade pupils home and bringing the Sub-Primary children back to the afternoon session.

This plan seems to solve our housing problems temporarily. I do hope we won't consider it a final solution to the extent that we won't consider more room necessary. The present arrangement is satisfactory as far as the beginning class is concerned.

However, there is very little time for the teacher to give individual attention to any pupil who may need it. I question whether the First Grade will be getting full benefits from a half day's work. Time alone will give the answer. The teacher load is still way above for teacher efficiency.

We are planning to repair the toilets, sinks and lights at the Pleasant Street School. The toilets are unsanitary as are the sinks. Two rows of lights should be installed in order to improve the lighting conditions. There will also be minor repairs on the toilets at Fuller's Corner School. The matter of a new school bus should be given serious consideration this year.

Grade Taught	Teacher Name	Total Pupils	Normal School Graduate	#Terms of Experience	Salary Weekly
Primary & 1	Nina Steeves	66	Yes	61	\$21.00
Grade 2 & 3	Evelyn Hogan	46	Yes	46	\$21.00
Grade 4 & 5	Mary Connelly	54	No	93	\$21.00
Grade 6 & 7	Ada McCrillis	36	No	106	\$21.00
Grade 8	Hartland Academy	18	<i>(Sub-Freshman)</i>	-	\$21.00
Fullers Corner	Gertrude Davis	15	Yes	57	\$20.00
All/Music	Gertrude Thorne	-	-	-	\$ 6.00

<u>Grade</u>	<u>Boys</u>	<u>Girls</u>	<u>Total</u>	<u>Average Attendance</u>
Primary & 1	37	29	66	63.40
2-3	21	25	46	43.60
4-5	27	27	54	49.82
6-7	18	18	36	33.94
8	8	10	18	17.01
Fullers Corner	8	7	15	14.41

Town Report 1941-1942

Article 55: To see what sum of money the town will vote to raise and appropriate for purchase of a School Bus.

Superintendent of Schools: Harold E. Carson

School Committee: Theodore F. Griffith, Merrill A. Moore, Eugene Williamson

School Physician: Dr. Charles A. Moulton

Dr. Moulton resigned his position as Town Health Officer this year replaced by Dr. Paul R. Briggs but continued as School Physician.

Harold E. Carson – Superintendent of Schools

The total enrollment in the elementary schools is 31 more pupils than we had last year. In spite of the fact that we put the addition on the Pleasant Street School and that Palmyra took most of their tuition pupils into their own schools, we were not able to help out our crowded condition to any extent.

Extensive repair work was done to the Pleasant Street School during the summer. The Webber School building was moved from its former location and made an addition to the Pleasant Street building. The result is a much needed room which is very satisfactory. \$1,000.00 was appropriated for this project. Approximately \$1,050.00 was spent on the building outside the heating plant.

The problem of heating the building was given much thought. The question was whether to build a chimney and use a stove, which would make three fires to attend, or to have a new central heating plant for all three rooms. It was finally decided to put in a new hot air furnace using a blower system to force the air through the building. This plant cost the town \$650.00 installed. This heating plant will heat the whole building satisfactorily, if enough fuel is used.

The building also needed new plumbing. The old flushes, wooden framed sinks and unsanitary bubblers were replaced with new bowls, lavatories and bubblers. We have paid for part of this plumbing out of the regular repair account. The balance will have to be paid out of repair money appropriated this year.

Repairs for next year should include rewiring the old rooms in the Pleasant Street School for more efficient lighting and wiring the Fuller's Corner School building for lights.

We have been informed from higher sources that the school bus situation is acute. The chance of getting a new bus in 1942 is fair if the order is placed in the near future. I believe that we must purchase a new bus

this year and that we should still keep the old bus. The trade-in allowance of the old bus would be very little and it would be on hand in case of an emergency.

I would like to see a hot school lunch, served at noon, to our bus children next year. It should begin in November and be carried through until warm weather. This can be done if parents and organizations show enough interest. Surrounding towns are doing some fine things for their children at noon. If we can get surplus commodities, W.P.A. cooks and helpers and the children will pay five cents a meal, a full course dinner could be served. If any club or organization cares to participate in this project please contact me.

If you feel that there is interest and time enough for another organization in town, such as a Parent-Teachers Association, I would be glad to help get it organized. This organization is helpful regarding school matters. It is like all other clubs, you get out of it exactly what you put into it. If you feel that there is a need of such an organization here, please make it known.

Primary	Nina Steeves	35
Grade 1 & 2B	Kathleen Kelly	42
Grade 2A & 3	Evelyn Hogan	47
Grade 4 & 5	Mary Connelly	49
Grade 6 & 7	Gertrude Davis	51
Grade 8	Hartland Academy	19 (<i>Sub-Freshman</i>)
Fullers Corner	Pearl Church	23
All/Music	Gertrude Thorne	266

Dr. Charles A. Moulton – Report of School Physician:

Plans for next year should include an immunization program against diphtheria, and for repeating tuberculin tests if possible. A large number of pupils have already been vaccinated against smallpox.

Total number boys and girls registered	365
Total number boys and girls examined	346

Town Report 1942-1943

Art. 21. To see what action the town will vote to take regarding school lunches for the ensuing year, and what sum of money they will vote to raise and appropriate for this purpose, if any.

Superintendent of Schools: Harold E. Carson

School Committee: Theodore F. Griffith, Merrill A. Moore, Eugene L. Williamson

School Physician: Dr. Paul R. Briggs

Dr. Moulton resigned his position as School Physician this year replaced by Dr. Paul R. Briggs.

Harold E. Carson – Superintendent of Schools

The enrollment in our elementary schools is 13 pupils less this year than last. The crowded conditions still exist in the upper grades. The committee is making plans to add another teacher in these grades. This

teacher would be known as a helping teacher and would devote one-half day in each of the upper grade rooms. Her time would be devoted to giving help to individual pupils.

Grade Taught	Teacher Name	Total Pupils	Normal School Graduate	#Terms of Experience	Salary Weekly
Primary	Nina Steeves	30	Yes	67	\$21.00
Grade 1 & 2	Mary Perkins	46	No	10	\$20.00
Grade 3	Evelyn Hogan	40	Yes	52	\$21.00
Grade 4 & 5	Mary Connelly	48	No	101	\$22.00
Grade 6 & 7	Gertrude Davis	53	Yes	66	\$21.00
Grade 8	Hartland Academy	19	(Sub-Freshman)	-	\$21.00
Fullers Corner	Pearl Church	17	Yes	46	\$20.00
All/Music	Gertrude Thorne	-	-	-	\$12.00

Grade	Boys	Girls	Total	Average Attendance
Primary	20	10	30	24.63
1-2	23	23	46	37.98
3	27	13	40	34.76
4-5	29	19	48	43.00
6-7	22	31	53	48.41
8	10	9	19	17.01
Fullers Corner	10	7	17	15.03

Dr. Paul R. Briggs – Report of School Physician: (His First School Physician's Report)

380 pupils were examined in Hartland schools during 1942 session. The predominating correctable disabilities were listed and the parents notified. Schools which previously had a school physician were notably freer from illness due to correction at an earlier date, as urged by their previous school medical attendant, Dr. Charles A. Moulton of Hartland, through whose tireless efforts, their health was made more secure for the future.

I recommend a better system of ventilation for the schoolrooms. In many instances the windows are opened directly on the pupils when a change of air is indicated. Further, the screening of the windows to prevent flies and other insects will help many of the schools to have fewer empty seats due to illness. Many schools have non-adjustable seats which indirectly affect your child's health due to the fact they do not fit the seat, hence poor posture and poor health. Some schools have poor lighting systems, in which the black board is mottled or shaded. This too should be corrected. In summarizing may I impress you with the fact that "An ounce of prevention is worth a pound of cure".

Town Report 1943-1944

Article 27: To see what action the town will vote to take regarding the Harry Randlett rooms for school purposes, and what sum of money they will vote to raise and appropriate for this purpose.

(Refers to 2 rooms upstairs of the Hartland Hardware Store at the corner of Main Street & Mill Street)

Budget committee recommended renting, and recommended \$480.00

Article 28: To see if the town will vote to close the Fuller's Corner School.

Budget committee recommended closing

Superintendent of Schools: Harold E. Carson

School Committee: Theodore F. Griffith, Merrill A. Moore, Daniel E. Connelly

School Physician: Dr. Paul R. Briggs

Harold E. Carson – Superintendent of Schools

Enrollment in the schools has held up well. There are approximately 240 pupils in the grades. The attendance has been good in the majority of cases.

Shortly after the opening of school in the fall, there was a change made in the organization of the schools. Two rooms were rented in the Harry Randlett Block for school purposes and the Sub-Primary and First Grades were moved to this building.

(As noted by Connie (Clement) McDougal, "We used to walk over from Randlett's to the Grange Hall on Seekins Street for lunch. Harold & Althea Hubbard and Caroline (Munn) Hart were the Cooks")

Grades Two and Three are together in the Pleasant Street School. These grades total 48 pupils. At present the Second and Third grades are the only combined grades. A total of 48 pupils in this room are too many for good results. I do not see any possibility of eliminating two grades for one teacher until we can secure more room. Grades Four and Five were moved into separate rooms in the same building.

Grades Six, Seven and Eight are in three rooms in the Academy building. The closing of the Fuller Corner School and conveying those pupils to the Village grades made an additional teacher available.

While this arrangement does not take the place of an Elementary building sufficiently large enough to house all grades, it does make a much better arrangement than has existed for the past few years.

A short time ago a group of interested parents met at the Academy building and started what I hope will result in a permanent Parent and Teacher organization. The primary purpose of this meeting was to start hot lunches at school again. Plans are well under way and possibly by the time this report appears in print a hot lunch program will be started. This program is very worthwhile and needs your undivided support.

Note: A breakdown of the Teachers, their class assignments & class sizes was not reported. Those noted below are listed on the itemized Teacher's Salary Table provided in the Town Report.

Teachers, Assistants or Substitutes:

Nina Steeves	\$ 898.00
Mary Connelly	\$ 898.00
Gertrude Davis	\$ 898.00
Pearl Church	\$ 898.00
Mary Perkins	\$ 623.00
Doris Emery	\$ 523.00

Ernestine Carson	\$ 425.00
Evelyn Hogan	\$ 375.00
Ada Norcross	\$ 288.00
Thelma Thorne	\$ 200.00
Gertrude Thorne	\$ 172.80
Evelyn Glazer	\$ 145.50

Dr. Paul R. Briggs – Report of School Physician:

Examination of 309 pupils in the town of Hartland showed a remarkable improvement in the general health over that of 1942. It was further pleasing to see wind breaks installed in various schools to prevent a direct draft from falling on the scholars, the hot lunches, and screening of windows to prevent an influx of flies.

Town Report 1944-1945

Article 24: To see if the town will vote to authorize its selectmen to sell and dispose of the Fuller's Corner Schoolhouse.

Rent of Harry Randlett Block (*2 Rooms Upstairs at Hartland Hardware Store*) \$ 480.00

Superintendent of Schools: Harold E. Carson

School Committee: Theodore F. Griffith, Daniel E. Connelly, A. Raymond Spaulding

School Physician: Dr. Paul R. Briggs (*Increased to \$125 Annually. This will remain the same thru 1967*)

Harold E. Carson – Superintendent of Schools

We have a total of 224 elementary pupils including the 8th Grade registered during the fall term. This enrollment has been fairly well distributed between the eight teachers with the exception of Mrs. Steeves where the Sub-Primary and First Grade have been together. There doesn't seem to be any solution to this situation until such time as more room is available for another grade and another teacher.

Attendance has been good except for a few instances; most of these cases have been sickness. School has been operating on a fairly regular schedule. We have not lost much time on account of weather. There have been days when it has been doubtful about the advisability of having school. However, it has been my experience that most children will be out playing in the storms when they would be much better off in school. I do know that pupils and teachers don't like to make up time on Saturdays or during their regular vacation. We can expect to have school when the buses can make their run.

The pupils have been given special attention regarding health this year. The school physician has given each pupil a physical examination, defects were noted and many corrections have been made. Examinations of vision, hearing and the patch test for T. B. have been given by the nurse and the teachers. Reactions to the T. B. test have been x-rayed. The general conditions of the schools are good. If we can maintain our present standards for the duration of these critical times the town will be very fortunate.

In planning the budget for next year it seemed advisable to plan on the purchase of a new school bus to be used on the North Hartland run. The present 1936 Chevrolet is fairly well worn out. The cost of repairs to the present motor is extensive and a new motor for this particular model cannot be purchased.

In conclusion I wish to say a few words in regards to postwar planning for education. We are hearing and reading a great deal about post-war planning and what our Federal, State and local governments are doing to get ready for the period after the war. The town of Hartland has made a beginning toward financing a new school building. This effort should be continued as extensively as possible so that the full burden of finances won't be thrust upon the town at one time in the future.

I wish to offer the suggestion that a post-war building committee be appointed at this time. They should go to work immediately making plans for the buildings so that when the proper times come the town will be able to take advantage of any and all assistance that may be offered by outside sources.

Note: A breakdown of the Teachers, their class assignments & class sizes was not reported. Those noted below are listed on the itemized Teacher's Salary Table provided in the Town Report.

Teachers, Assistants or Substitutes:

Ernestine Carson	\$ 995.50
Gertrude Davis	\$ 995.50
Doris Emery	\$ 995.50
Nina Steeves	\$ 960.50
Mary Connelly	\$ 960.50
Pearl Church	\$ 960.50
Edythe Libby	\$ 620.50
Mary Perkins	\$ 412.50
Eloise Taylor	\$ 306.00
Evelyn Glazer	\$ 184.80
Thelma Thorne	\$ 37.50

Dr. Paul R. Briggs – Report of School Physician:

The general health of school children in the Town of Hartland was markedly improved in contrast to previous years. The majority of correctable disabilities were remedied and the physical conditions altered. Body hygiene was noticeably better due to efforts of teachers, parents and children to correct faulty cleanliness. The State Department of Health is to be commended for their part in the school program and for the specific work of County Nurses in maintaining health tests and programs. Loss of time due to illness has been decreased and in every way the teachers and pupils have thereby profited. Let us continue the good work of "PREVENTION" in the years to come, that it will not be necessary to have our children "CURED" of the various diseases that could have been prevented by our foresight.

Town Report 1945-1946

Rent of Harry Randlett Block (2 Rooms Upstairs at Hartland Hardware Store) \$ 480.00

Superintendent of Schools: Harold E. Carson

School Committee: Theodore F. Griffith, Daniel E. Connelly, A. Raymond Spaulding
School Physician: Dr. Paul R. Briggs

Harold E. Carson – Superintendent of Schools

There is an enrollment of 210 pupils in the elementary grades this year. These pupils have been fairly evenly distributed in each room except the primary room where there are a total of 47 Sub-Primary and First Grade pupils. In September 1946 there should be a helping teacher added to this room. Attendance in the grades has been average up to the present time.

Plans should be made now to purchase a new school bus to replace the Orange Bus. A 60 passenger bus should be purchased and used on the West Hartland run. The smaller Yellow Bus should be transferred to the North Hartland route.

Plans should be going forward for the construction of a new elementary school building. I wish parents and future parents would visit the school rooms and see for themselves just what the housing conditions are. I feel sure after a visit to all rooms that you will agree that something needs to be done in the very near future.

The following budget is presented for your consideration:

Common Schools and New Bus	\$13,000.00
Secondary Tuition	\$ 4,000.00
Rent of Randlett Building Rooms	\$ 480.00
Repairs and Insurance	\$ 600.00
School Physician	\$ 125.00
School Committee	\$ 75.00
Superintendent	\$ 560.00

Note: A breakdown of the Teachers, their class assignments & class sizes was not reported. Those noted below are listed on the itemized Teacher's Salary Table provided in the Town Report.

Teachers, Assistants or Substitutes:

Ernestine Carson	\$1,147.43
Edythe Libby	\$1,147.43
Gertrude Davis	\$1,117.43
Doris Emery	\$1,117.43
Pearl Church	\$1,147.43
Harriet Havey	\$ 727.43
Mary McLean	\$ 697.43
Nina Steeves	\$ 420.00
Mary Connelly	\$ 420.00
Eloise E. Taylor	\$ 316.00

Dr. Paul R. Briggs – Report of School Physician:

Examination of school children in the Town of Hartland showed an excellent physical standard being maintained. There are however many correctable disabilities and these have been called to the attention of the parents and guardians of these pupils. May I again impress upon these few to correct these defects that their children may continue in good health. That is the purpose of school guidance; to prevent rather than cure disease. Inoculations were given to prevent diphtheria and were apparently very successful. Cooperation of the Public Health Service, local volunteers and County Nurse are acknowledged and appreciated in our school programs. May we continue to watch closely the health of our children that they may serve a useful, independent life to our community in the years to come.

Town Report 1946-1947

Rent of Harry Randlett Block (*2 Rooms Upstairs at Hartland Hardware Store*) \$ 480.00

Superintendent of Schools: Harold E. Carson (*thru June 1946*), Harvey B. Scribner
School Committee: Theodore F. Griffith, Daniel E. Connelly, A. Raymond Spaulding
School Physician: Dr. Paul R. Briggs (Dr. Charles A. Moulton passes away in 1946)

Harvey B. Scribner – Superintendent of Schools

It is with pleasure that I present this, my first annual report on your school system. My time here has been relatively for a short part of the year, therefore I prefer to think in terms of the present and future rather than to attempt to review the past. In some aspects the school system here has many fine features. One average size grade to a teacher is an excellent arrangement. Your transportation system possesses one new bus, and has a new chassis under the second bus. Your children have an opportunity to purchase a good substantial hot meal daily at a low cost. You have adequate supplies and sufficient books for the greater part. Your staff of teachers is turning in good work and deserve acknowledgement for same. The merits of any school may be quite accurately measured by the caliber of the teachers.

However, we are badly handicapped from the standpoint of adequate housing facilities. There is constant danger in our present arrangement and something should be done to alleviate it before fall. By continuing our use of the Randlett Building, we are informed by the State Department of Education that they will recommend to the Governor and council that our State school fund be withheld. In order to legally keep school in any building, we need a permit from the State Department of Education. We do not have a permit to cover this building.

The answer to our problem is a new school building housing all the elementary grades. My personal recommendation would be for the towns of Palmyra and Hartland to enter into contract and build a modern school building to house the children from both towns.

Pleasant Street School

Primary – Edythe Libby, assisted by Grace Woodman (18 pupils)
Grade 1 – Edythe Libby, assisted by Grace Woodman (16)
Grade 2 – Mary McLean (24)
Grade 3 – Pearl Church (18)

Randlett Building

Grade 4 – Edith Hutchinson (23)

Grade 5 – Ernestine Carson (28)

Academy Building

Grade 6 – Doris Emery (16)

Grade 7 – Gertrude Davis (29)

Grade 8 – Sub-Freshman scheduled with High School (21)

Dr. Paul R. Briggs – School Physician

The school rooms in general are very crowded and in some cases the teachers are greatly overtaxed. The rooms housing the children in the fourth and fifth grades are inadequate. Toilets are small, have no air ventilation and are in a poor place, i.e. there is a common entrance for boys and girls. Proper fire escapes are not provided and all in all it is a very poor place to put our children.

There is a further lack of playground facilities. The children have to cross a dangerous intersection to play or to commute to and from school. Boys and girls should be separated in playgrounds. A careful supervision of children during recess and school periods should be exercised.

A central school is greatly needed from public health standpoint and I strongly urge that the citizens of Hartland consider this problem. If funds are not available to the extent of building a modern school there is a further thought that a group school alliance might be formed with the other towns that are so badly in need of a central building and the formation of a common school benefiting all might be established.

Hartland is to be congratulated on its teaching facilities and should be proud of its teachers. The public health nurse should be commended on her efforts to assist in keeping our children well. We are very fortunate to have had as few accidents on the highway to date, considering the fact that we do not shepherd our pupils across the same. Is not the price of one child's death, due to accident that is preventable, a costly one when we might through a bit of effort take precautions against this?

Town Report 1947-1948

Rent of Harry Randlett Block (*2 Rooms Upstairs at Hartland Hardware Store*) \$ 600.00

Article 46: To see what sum, if any, the town will vote to raise and appropriate to purchase part of the Dr. Jennie Fuller Field to be used as a school site. (Elm Street)

Budget committee recommends 9-1/2 Acres and \$1,500.

Superintendent of Schools: Harvey B. Scribner

School Committee: Theodore F. Griffith, Daniel E. Connelly, Mary A. Connelly

School Physician: Dr. Paul R. Briggs

Harvey B. Scribner – Superintendent of Schools

You had 221 pupils registered in your schools during the past year and nine teachers were employed. This would signify that each teacher had an average registration of 24.5 pupils. The highest enrollment was 47

persons in the Sub-primary and First Grade while grade seven has only 16 registered. It is unfortunate that this inconsistency exists, yet, with our present housing situation there isn't any good solution. I do hope however, that the combining of two grades may eventually be affected in the upper grades in order that the Sub-primary and First Grade may work as separate units.

With the present teacher shortage, I believe we were very fortunate to fill our three vacancies which occurred during the past summer with certified teachers. These people came to us in September and have shouldered our problems with a professional spirit and are giving us their best service.

We do need better school housing to replace the Randlett Block rooms and the question is still unsettled in regards to permission to use these rooms for another year. However, I believe that if the town takes favorable action on the Article inserted in the warrant concerning the purchasing of a school building lot that the State will act favorably on our request.

Principal – (Unknown)

Total Students = (221)

Primary – Carmen Erskine, assisted by Grace Woodman (26 pupils)

Grade 1 – Carmen Erskine, assisted by Grace Woodman (21)

Grade 2 – Helen McLean (19)

Grade 3 – Pearl Church-Newell (23)

Grade 4 – Phyllis Emery (23)

Grade 5 – Ernestine Carson (20)

Grade 6 – Doris Emery (31)

Grade 7 – Florice Davis (17)

Grade 8 – Sub-Freshman at Hartland Academy (31)

Dr. Paul R. Briggs – School Physician

(Report wasn't copied to digital files)

Town Report 1948-1949

Article 48: “Shall the act to Incorporate the Town of Hartland School District be accepted?”

Rent of Harry Randlett Block (*2 Rooms Upstairs at Hartland Hardware Store*) \$ 600.00

Superintendent of Schools: Harvey B. Scribner

School Committee: Theodore F. Griffith, Daniel E. Connelly, Mary A. Connelly

School Physician: Dr. Paul R. Briggs

Harvey B. Scribner – Superintendent of Schools

When your town meets at its annual Town Meeting, you will have the opportunity for the first time in many years to do something constructive about school housing. You will be asked to vote “Yes” or “No” on the following question: “Shall the Act to Incorporate the Town of Hartland School District be accepted?”

You will note the absence of any suggested plan for the new housing. The fact that they are omitted here in no way means that I haven't any. I do believe, however, that it is serious business and needs much ground work to determine what is best for the town. The time is right and it will not invoke any serious handicap upon the taxpayers. You have an obligation to your children and you should be efficiency minded. You know that the present system is not good, you know it is inefficient, you know that it needs a revision so why not give this whole proposition ample consideration and build for the future what is best for the youth of your town and that which will best meet good business practices.

It is my own opinion that this past year has been one of encouragement. Many factors cause me to believe in this manner. Namely, we have seen excellent teaching in our class rooms. Our program of academic training is well supplemented with a fine musical program. Our school lunches have functioned in a complimentary manner, more emphasis has been placed on organized recreation for out of school time, excellent cooperation has perpetuated our total program and the birth of an active P.T.A. gives promise of more hope in the future.

You have in your elementary schools in Hartland the following enrollment:

Primary (31) | Grade 1 (21) | Grade 2 (17) | Grade 3 (24) | Grade 4 (24)
Grade 5 (21) | Grade 6 (14) | Grade 7 (28) | Grade 8 (19) | (Total = 199)

This affords a very excellent situation in so far as teacher load is concerned and it is unfortunate that all other factors are not likewise. However, the fact remains that even under this ideal arrangement of one grade per teacher that the poor housing situation tends to tear it down.

The Sub-Primary and First Grade were too large to handle efficiently as one group as fifty-two children were enrolled. Therefore, a temporary partition has been placed mid-way in the upper room at the Athens Street School thus providing two class rooms of a makeshift nature. The partition is about 18 inches from the floor and an equal distance from the ceiling. This has to be done as the heat has to circulate since the only heating unit is at the end of the room however each First Grade child must pass through the Sub-Primary room for drinks, basement and to go outdoors. The partition keeps them apart in so far as being annoyed by each watching the other group but the noise is almost as though they were all in together. The results however are most satisfactory as compared to the one large group.

In Grade 2 your enrollment is only seventeen pupils but the room is of such small size that it will not accommodate many more than this number. Therefore the building is impossible in so far as efficiency is concerned as it is impossible to do any more grouping and what already exists is not good.

Then as we move up to the Randlett Block you can see for yourself what is wrong. However, in fairness to the teachers concerned, I must say that they make the very best of all possible facilities. To begin with, we are supposed by law to have a permit to hold school in this building and such a permit was never granted and the State Department warns me that it never will be granted. They rule that it is an "unfit" place to house school children. Their reasons are as follows: It does not meet lighting standards, it lacks adequate toilet facilities, it is not properly equipped with a fire escape and that it does not afford a playground that is accessible without danger.

Please do not misconstrue my intent here. I am only dealing in facts as they are explained to me. I feel personally, that we should feel fortunate that we could use these two rooms to alleviate our condition. Without this accommodation we would be in a more serious position but at the same time we should not rest upon this outlet for full time use.

Our third housing unit is the Academy Building where we have Grades Six, Seven and Eight. In so far as Grades Six and Seven are concerned, there could be no complaint. They are standard size class rooms and afford proper facilities. However, Grade Eight is housed in a small class room which is unfit for full time use for more than twenty pupils.

Nine grades are scattered through three buildings, two of which are crowded and one which does not meet State requirements. It is evident that something needs to be done.

Note: A breakdown of the Teachers and their class assignments was not reported. Those noted below are listed on the itemized Teacher's Salary Table provided in the Town Report.

Teachers, Substitutes or Assistants:

Mary McLean	Florice Davis	Carmen Erskine	Doris Emery
Wayne Moore	Rachel Turner	Helen McLean	Geraldine Smith
Pearl Newell	Ernestine Carson	Clara Moore	Phyllis Emery Lufkin
Glenroy Lamb	Grace Woodman	Minnie Harville	Helen Shorey

Dr. Paul R. Briggs – School Physician

A central school is greatly needed from public health standards, the rooms now in use are small, overcrowded, poorly ventilated with inadequate toilet facilities and poor playgrounds.

Town Report 1949-1950

Article 45: To see if the town will vote to authorize and direct the selectmen, as trustees of the capital reserve fund, established for the purpose of building a school building by vote of the Town at its annual town meeting March 14, 1944, to transfer to the Town of Hartland School District all monies, bonds, and securities now constituting said capital reserve fund.

Rent of Harry Randlett Block (2 Rooms Upstairs at Hartland Hardware Store) \$ 600.00

Superintendent of Schools: Harvey B. Scribner

School Committee: Theodore F. Griffith, Daniel E. Connelly, Mary A. Connelly

School Physician: Dr. Paul R. Briggs

Harvey B. Scribner – Superintendent of Schools

As I have now left the employ of your school system, I would like to make this report of a review in nature. Your town boasts of a good school system insofar as the curriculum is concerned. You have a fine teaching force and it seems as though it improves each year. The addition of Miss Doris Johnson and the return of Mrs. Edythe Libby, improved our strength this year. As for your teachers, I give them my whole-hearted endorsement.

As for the physical aspects of your school system, I believe your town has made a great step forward. When the new school is erected, Hartland will truly move much closer to the realm of idealism. The financial outlay may seem large but one should weigh the results against this sacrifice before criticizing.

Since the elementary school is the basis for all future learning, there cannot be too great an emphasis placed upon it. What more people need is to see at first-hand what the schools offer and then greater respect would be held for the cost. When you consider the youngsters of all of the people when they first enter your schools and then you observe these same individuals as they graduate from our schools, you can readily observe that a great change has been accomplished.

Note: A breakdown of the Teachers, their class assignments & class sizes was not reported. Those noted below are listed on the itemized Teacher's Salary Table provided in the Town Report.

Teachers, Substitutes or Assistants:

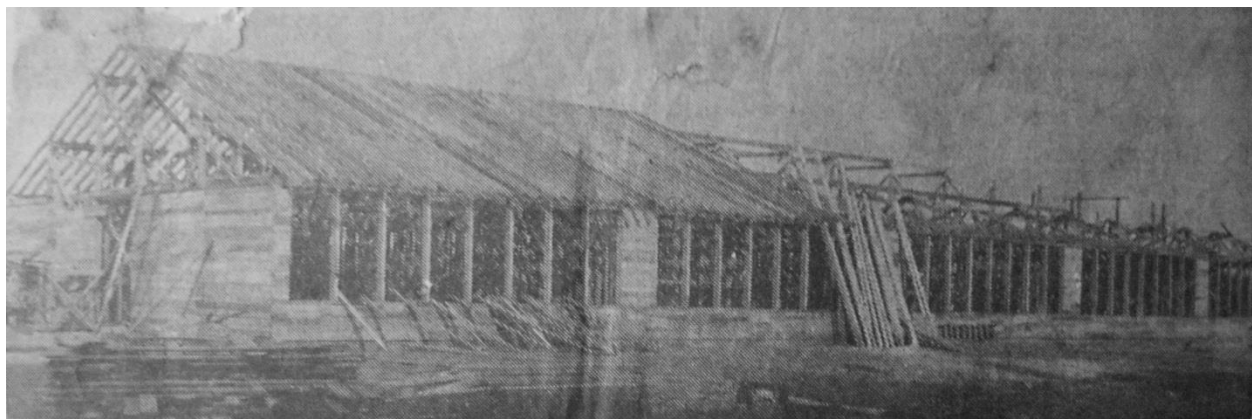
Wayne Moore	Florice Davis	Doris Emery	Dorothy White
Edythe Libby	Helen McLean	Geraldine Smith	Mary McLean
Carmen Erskine	Doris Johnson	Clara Moore	Glenroy Lamb

Dr. Paul R. Briggs – School Physician

The general health of the children of the Hartland schools was found by examination to be good in the 1949-1950 schoolyear.

Many defects have been corrected that heretofore existed thus laying the foundation for better health in the days to come. Light, heat, and ventilation have been improved upon thus making working conditions better.

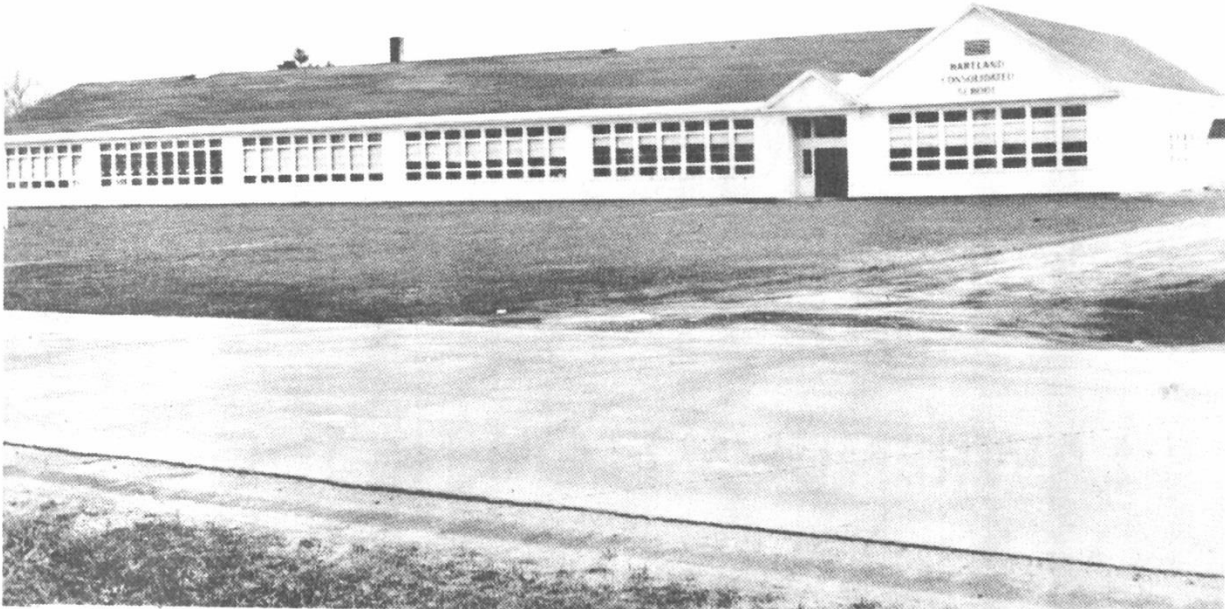
**New Hartland Consolidated School Under Construction
Elm Street - Summer of 1950**



HARTLAND'S NEW CONSOLIDATED SCHOOL
—Since the middle of April, crews have been working on a new \$65,000 elementary school for Hartland, designed to relieve the town's present crowded conditions. The school, will be 56 feet wide and 225 feet long and will house nine classrooms. Four of the rooms, on the left end of the building, will be ready for

occupancy when the school opens in September. Students of the third, fourth, fifth and sixth grades will be the first to occupy space in the new building, while other class rooms will be opened to students as soon as they are completed. The combination gymnasium and lunch room will be constructed off the right end of the building.
(Staff Photo by Taylor)

**New Hartland Consolidated School
Elm Street
Sub-Primary-Grade 8**



Town Report 1950-1951

Article 14: To see if the town will vote to discontinue the so called Pleasant Street School, upon the written recommendation of the Superintending School Committee.

Article 15: To see if the town will vote to raise and appropriate a sum of money to build a three school bus garage on the site of the new Consolidated School.

Article 16: To see if the town will vote to authorize its selectmen to sell the Pleasant Street School building.

Article 17: To see if the town will vote to sell and convey the Pleasant Street School property to the Christopher G. Linn Post #141 American Legion of Hartland and establish a price for the said property and authorize and instruct the board of selectmen to execute a deed to convey said property.

Rent of Harry Randlett Block (*1 Room Upstairs at Hartland Hardware Store*) \$ 300.00
Some of the students remained in classes at the Randlett Rooms until the remainder of the new school was completed following the end of Christmas/New Year's Vacation in January of 1951.

Superintendent of Schools: Harold E. Carson

School Committee: Theodore F. Griffith, Daniel E. Connelly, Maurice W. Hanson

School Physician: Dr. Paul R. Briggs

Harold E. Carson – Superintendent of Schools

This past year has been very eventful as far as your schools are concerned. During the year the new, modern and very practical consolidated school was completed and occupied by all grades. You are all familiar by now with the organization of your school. The citizens of Hartland have something to be proud of because you have afforded the pupils with the physical advantages of an elementary education comparable to those of any community in the State.

It is now up to those people concerned with the administration of the schools to see that modern books, supplies and equipment are made available for the use of the pupils and also to see that the teaching personnel is the best that can be hired for the salaries paid.

To complete the whole program now, a storage building large enough to house three buses should be erected as soon as possible. I feel certain that such a building over the years would be a wise investment as money could be saved on minor repairs to the buses and proper housing would prolong their life.

Financially, the schools are on a sound basis with the exception of the repair and equipment account. During the period of change over supplies and equipment were needed. The P.T.A. helped out on equipment for the lunch program. I would like to take this opportunity to thank the P.T.A. and all people that have aided in organizing this program. I feel that you would have to travel a long way before you would find a better school lunch served in a more efficient and pleasant environment. For the coming year, we have anticipated increasing costs in both the Elementary school budget and Secondary school budget. Our teaching force must be given an increase in pay and we already know that we must pay more for books and supplies and soon we must replace both of the present school buses.

Note: A breakdown of the Teachers, their class assignments & class sizes was not reported. Those noted below are listed on the itemized Teacher's Salary Table provided in the Town Report.

Teachers, Substitutes or Assistants:

Wayne Moore	Florice Davis	Helen McLean	Doris Emery
Geraldine Smith	Doris Johnson	Clara Moore	Edythe Libby
Glenroy Lamb	Jean Harris	Helen Shorey	Barbara Chandler
Grace Woodman	Emma Bubar	Joan Fortier	

Dr. Paul R. Briggs – School Physician

Health, in general, was found to be good, disabilities were noted and forwarded to the parents.

Hartland is to be congratulated on its fine central school. It has been a big chance to take from the financial standpoint but has been a worthwhile project. The rooms are well cared for, not crowded, well lighted, and recreation well provided. All teachers seem contented and the students are proud of their new institution and volunteer to help keep it in good condition.

The town should be proud of their school and indebted deeply to those who brought about the creation of that school whether or not they agree entirely on the program followed. These people gave their time and effort to the best of their ability that our children might enjoy a better chance.

Town Report 1951-1952

At this Town Meeting, Hartland adopted the Town Manager form of government.

Article 33: To see if the town will vote to build a sidewalk on the east side of Elm Street from the corner of Academy Street to the Consolidated School Building so the school children from Academy Street and Commercial Street won't have to cross two streets. (Budget Committee recommends No)

Superintendent of Schools: Harold E. Carson

School Committee: Theodore F. Griffith, Daniel E. Connelly, Maurice W. Hanson

Town of Hartland School District Trustees: Fred W. Libby, Maurice W. Hanson, Merrill A. Moore

School Physician: Dr. Paul R. Briggs

Report of the Trustees of Town of Hartland School District for 1951:

The Trustees are pleased to submit their second annual report of progress covering the various projects completed, partially completed during 1951, and also those contemplated for 1952.

Projects Completed: Last coat of exterior paint; grading in front of school; portable sectional stage for the gymnasium; bicycle rack built for us by the F. F. A. boys; combination tool shed and outdoor canteen; window guards for the gymnasium; and entrance culvert.

Projects Partially Completed: Athletic field drain; have purchased and received a fire door for the boiler room which, when installed, will reduce the fire insurance rate on the building; have purchased and received complete flag pole equipment; have purchased and received an auxiliary sump pump for the boiler room which drains the basement in an emergency in case of power failure which operates automatically by water pressure.

Projects Planned for 1952: Completion of all projects mentioned in the paragraph above; a sign reading. "HARTLAND CONSOLIDATED SCHOOL" to be placed on the front of the gymnasium facing Elm Street; a few shade trees to be set out in rear of the school; power lawn mower; construction of an athletic field as far as our funds will permit.

On behalf of the Townspeople, the Trustees herewith express their deep appreciation to Isadore Lerner who has given the school a very fine American Flag.

Harold E. Carson – Superintendent of Schools

We have been operating in the new building for one year now. As far as I know the pupils, teachers and parents are as well pleased with the new plant as ever. The enrollment in the school is remaining constant.

There are three new teachers this year. Our most urgent need for next year is a new 60 passenger bus for the West Hartland run. We have allowed for this in our next year's budget.

Note: A breakdown of the Teachers, their class assignments & class sizes was not reported. Those noted below are listed on the itemized Teacher's Salary Table provided in the Town Report.

Teachers, Substitutes or Assistants:

Florice Davis	Doris Emery	Joan Fortier	Doris Johnson
Edythe Libby	Helen McLean	Wayne Moore	Glen White
Quentien Johnson	Priscilla White	Charles Broomhall	Geraldine Smith
Clara Moore	Glenroy Lamb	Grace Woodman	Grace Weymouth
Rae Whitney	Arvene Yakemore	Evelyn Page	

Dr. Paul R. Briggs – School Physician

An inspection and examination of the schools and pupils in the town of Hartland showed an excellent status. The pupils are happy and proud in their new institution and the group which supervises it is to be congratulated. Physically, for the most part, the scholars are in good condition. Very few disability cards were sent home for corrective defects. The Parent Teachers Association likewise is laudable, for their efforts have been evolutionary rather than revolutionary, wholly aimed for the child's benefit. Suggestions have been made to the officials regarding playground supervision and various other matters. Miss Louise Skelton is again to be congratulated for her active part in the school health program.

Town Report 1952-1953

Superintendent of Schools: Harold E. Carson

School Committee: Theodore F. Griffith, Daniel E. Connelly, Maurice W. Hanson

Town of Hartland School District Trustees: Fred W. Libby, Maurice W. Hanson, Merrill A. Moore

School Physician: Dr. Paul R. Briggs

Harold E. Carson – Superintendent of Schools

The enrollment in the schools has increased slightly over that of last year. All grades have an enrollment over twenty pupils except the sixth grade which numbers 18. The lower grades are much larger than usual, each numbering around 30 pupils.

The new 60 passenger bus was purchased for the West Hartland run. This is a GMC truck with an Oneida body and was purchased at a bid price of \$6,671. This unit seems to be very practical for this run. With proper care it should serve the town for a 10 year period.

As soon as possible I believe that it would be a wise move on the part of the town to build a storage place for these buses. It seems unwise to invest so much money in this type of equipment and have to leave it out of doors the year round.

The North Hartland bus will have to be replaced before long. We are at present starting a reserve fund to be used in replacing this bus. This year we have had to put a feeder bus on Huff Hill in order to transport some pupils to meet the West Hartland bus.

Note: A breakdown of the Teachers, their class assignments & class sizes was not reported. Those noted below are listed on the itemized Teacher's Salary Table provided in the Town Report.

Teachers, Substitutes or Assistants:

Glenn White	\$2,566.56
Edythe Libby	\$2,333.19
Geraldine Smith	\$2,258.19
Doris Emery	\$2,258.19
Helen McLean	\$2,183.19
Florice Davis	\$1,299.52
Arvene Yakemore	\$1,200.00
Evelyn Page	\$1,133.36
Joan Fortier	\$1,266.56
Retha Boterf	\$ 870.76
Annie Dow	\$ 870.76
Helen Littlefield	\$ 825.00
Elizabeth Ireland	\$ 825.00
Glenroy Lamb	\$ 457.55
Alexander Economos	\$ 386.43
Grace Weymouth	\$ 56.00
Grace Woodman	\$ 38.50
Ellen Cooper	\$ 31.50
Emma Bubar	\$ 7.00
Jo Ann Lancaster	\$ 7.00

Dr. Paul R. Briggs – School Physician

The health situation of the students of Hartland is excellent as compared with previous years. The schools are well cared for and the proper precautions to safeguard the pupils have been taken. The scholars for the most part were neat and clean. Very few disabilities were recorded and referred to parents or guardians for action. This periodic health examination has served as a preventive medicine and detected many correctable disabling conditions before they become serious enough to handicap a child for life. This gesture of the part of the town and school committee should give a great deal of satisfaction to the inhabitants of a community.

Town Report 1953-1954

Article 18: To see if the town will vote to appropriate from surplus the amount of \$1,028.23, which equals the amount due from the general fund to the Ministerial and School Fund, and deposit this amount in the Skowhegan Savings Bank as a savings account with the interest to be paid annually to the town of Hartland for the support of public schools. *(See 1850 Town Warrant above for original appropriation)*

Article 24: To see if the town will vote to appropriate from surplus, the sum of \$500.00. This amount being equal to the amount appropriated at the annual town meeting held March 12, 1951, as a revolving School Lunch Fund. This sum of money to be deposited in the Skowhegan Savings Bank as a savings account, the interest to be added to and become a part of the principal. Withdrawals from this account can be made only on orders signed by a majority of the school committee and the Treasurer of the Town of Hartland.

Article 25: To see if the town will vote to authorize the School Committee and Treasurer to deposit in the Skowhegan Savings Bank, an amount equal to the School Bus Reserve Fund of \$4,100.00. And, on or before May 1, of each year add to this account such sums as may be raised and appropriated for school bus reserve. Interest on this account shall be added to and become a part of the principal. Withdrawals from this account shall be made only for the purchase of new school busses, and only after authorization at an annual town meeting or special town meeting held for that purpose and on written orders signed by a majority of the school committee and the Treasurer of the Town of Hartland.

Article 43: To see what sum if any the town will vote to raise and appropriate to sponsor a Summer Recreational Program for Hartland, any sum to be expended by and such program to be supervised by the School Committee.

Article 49: To see if the town will vote to authorize the Hartland School District to construct a school bus garage to house 2 busses on land now owned by the Hartland School District, and authorize the treasurer of the School District to add the sum of \$4,000.00 to his warrant due April 1, 1954. This sum has been estimated to be the cost of constructing the building.

Superintendent of Schools: Harold E. Carson

School Committee: Theodore F. Griffith, Daniel E. Connelly, Maurice W. Hanson

Town of Hartland School District Trustees: Fred W. Libby, Maurice W. Hanson, Jean Stedman

School Physician: Dr. Paul R. Briggs

Harold E. Carson – Superintendent of Schools

You will observe that our heaviest enrollment is in our lower grades with the beginners' class creating our greatest problem. Because of the number of pupils and the fact that they were entering school for the first time, it was deemed advisable to divide the group into a morning and afternoon session.

As it happened the bus pupils and village pupils were about equal in number, so the matter of making two divisions was easy except that it involved an extra trip for a bus over the entire road. A schedule was set up to provide this extra conveyance and it looks now as if we will be operating this way for the rest of the year. It is impossible to say about next school year. We are in hopes that classes will be of a size so that we can adjust them all into the regular session of school. However, if last September entering class is any indication of future classes, plans will have to be made to accommodate them.

Mention of three new pieces of playground equipment, an outside basketball court and an ice skating area is worthy of your consideration. The School District Committee and P. T. A. deserve much credit for this development.

In addition to the progress made in the regular school work, I would like to mention the progress made in extra curricula activities and music especially. Mr. White has devoted much time with the physical education and athletic program. By employing Mr. Economos more time for music, we now have a fine music program started. There have been some requests for a full time music instructor in the grades. These requests will be settled by the taxpayers at their town meeting

The teaching situation is past history now. Just before the opening of school, the former sub-primary teacher, Mrs. Edythe Libby, resigned in order to take a more lucrative position elsewhere. Mrs. JoAnn Lancaster was moved from the seventh grade position to the sub-primary class and Mrs. Alice Killam was secured for the seventh grade position. Soon Mrs. Lancaster resigned the sub-primary position because she was to move away. Mrs. Helen Rowe was hired as a replacement in the sub-primary grade. At the end of the fall term Mrs. Killam resigned the seventh grade position and Mrs. Elaine Daily was hired as a teacher for this position.

Principal – Glen White

Total Students = (223)

Primary – JoAnn Lancaster/Helen Rowe (40)

Grade 1 – Thelma Cook (28)

Grade 2 – Geraldine Smith (28)

Grade 3 – Barbara Moody (25)

Grade 4 – Margaret Tracy (22)

Grade 5 – Helen McLean (23)

Grade 6 – Doris Emery (21)

Grade 7 – Alice Killam/Elaine Daily (17)

Grade 8 – Glenn White (19)

All Teachers, Substitutes or Assistants:

Helen Rowe	Edythe Libby	Marjorie Weaver	Grace Weymouth
Annie Dow	Alice Dow	Geraldine Smith	Helen Littlefield
Elizabeth Ireland	Marguerite Tracy	Helen McLean	Doris Emery
Retha Boterf	Barbara Moody	Glenn White	Alexander Economos
Jo Ann Lancaster	Thelma Cook	Elaine Daily	

Dr. Paul R. Briggs – School Physician

The Hartland School is in excellent condition, together with the pupils it houses. Disabilities were much lessened – fewer cards were sent to parents for correction. The activities of the P.T.A., the school officials and teachers are commendable. Playground supervision has improved.

Town Report 1954-1955

Article 19: To see if the town will vote to raise and appropriate the following sums as recommended by the Department of Education, for the ensuing year, under 1955 recommendations.

<u>Appropriations</u>		<u>Recommended</u>
<u>1954</u>		<u>1955</u>
\$25,000.00	Common Schools including bus reserve	\$26,021.94
\$500.00	Repairs, insurance, equipment and contingency	\$200.00
\$1,100.00	Superintendent's salary, office expense, School Committee	\$1,285.00
\$250.00	Physician and fluoride treatments	\$250.00

Article 41: To see if the town will vote to authorize the Hartland School District to arrange for the insulation of the ceiling of the gym at the Consolidated School, and to include the cost of the same in their warrant for the year 1955.

Superintendent of Schools: Harold E. Carson (*thru September 1954*); Chester R. Parker
School Committee: Daniel E. Connelly, Maurice W. Hanson, Mary E. Cooper
Town of Hartland School District Trustees: Fred W. Libby, Jean Stedman, Donald K. Hollister
School Physician: Dr. Paul R. Briggs

Chester R. Parker – Superintendent of Schools

Next Fall we will be faced with a pupil to teacher ratio larger than we wish to have in the first and second grades and a large sub-primary enrollment will necessitate a two session day for them. Plans should be made now to provide the housing facilities that will be needed.

Louis Garenani, a graduate of the New England Conservatory of Music, was engaged to teach music and do instrumental work with the band. Mr. Garenani produced a very successful Christmas program with the primary grades and is now working on an operetta for the upper grades. There are 25 pupils playing with the Band.

Miss Day is a graduate of Aroostook Teachers College and Mr. Smith and Mr. Doyon are graduates of Farmington Teachers College. Miss Ramona Wheeler has assisted with the sub-primary and first grade as a helping teacher. Several of the teachers have been working during the Fall and Winter term with a Committee studying the English needs of the pupils and plans to adopt new textbooks. Mr. White with the assistance of Mr. Smith, Mr. Doyon and Miss Wheeler has a very active physical education program, for both the boys and the girls.

The purchase of a new 60 passenger bus assures all pupils who are transported a safe, comfortable and reliable conveyance.

Principal – (Unknown)

Total Students = (242)

Primary – Helen Rowe (35)

Grade 1 – Thelma Cook (37)

Grade 2 – Geraldine Smith (30)

Grade 3 – Opal Day (25)

Grade 4 – Marguerite Goforth (24)

Grade 5 – Harold Smith (24)

Grade 6 – Doris Emery (26)

Grade 7 – Douglas Doyon (22)

Grade 8 – Glenn White (19)

All Teachers, Substitutes or Assistants:

John Pressey	Helen Shorey	Grace Woodman	Ramona Wheeler
Helen Rowe	Thelma Cook	Geraldine Smith	Barbara Moody

Opal Day	Marguerite Goforth	Helen McLean	Harold Smith
Doris Emery	Douglas Doyon	Glenn White	Alexander Economos
Louis Garenani	Doris Bridge	Maxine Pease	Helen Littlefield
Pearlene Walker	Eleanor Parker	Ina Kane	Elizabeth Ireland
Elaine Daily			

Dr. Paul R. Briggs – School Physician

Examination of the pupils in Hartland and inspection of the institution revealed student health at a high level and the school in fairly good condition as regards to cleanliness and health hazards. Several rooms were apparently over-crowded which not only jeopardizes physical, but also mental health and student reception of teaching. The playgrounds have been well supervised and the teachers appear cooperative and alert. Should additional space be required in the future, it is suggested that an examining room which could also be used for a first-aid center be provided and maintained.

Town Report 1955-1956

Superintendent of Schools: Chester R. Parker (*thru September 1955*); Harold E. Carson

School Committee: Maurice W. Hanson, Mary E. Cooper, Helen Littlefield, Keith R. Tapley

Town of Hartland School District Trustees: Fred W. Libby, Jean Stedman, Donald K. Hollister

School Physician: Dr. Paul R. Briggs

Harold E. Carson – Superintendent of Schools

The school enrollment is continuing to increase especially in the lower grades. If this condition continues to exist, more rooms and more teachers will be necessary in order to do the best for all pupils. 25 pupils is the recommended teacher load. In one room there are 40 pupils; three other rooms have over 30 pupils. If the town continues to grow in population to keep pace with the industrial growth, it won't be too many years before more class rooms will be needed.

The teaching force is doing a fine job and all teachers are well qualified for their respective assignments. Several of the teachers are preparing themselves to become better teachers by continued study. The music program is in capable hands, also the physical education and athletic activities are very well handled. In fact the whole teaching force is doing an excellent piece of work and they demonstrate a fine spirit of cooperation in doing their work.

The School Committee has made a minimum of repairs on the new building. Insulation and wood paneling was installed in the ceiling of the gymnasium. All major repair work was done by the School District Committee. The work done by this Committee on the gym/general purpose room ceiling should result in a saving of fuel.

The building has been in use for five years, and I think it is in excellent condition. However, in order to keep it good I would suggest that an interior painting program be started soon. Possibly two or three rooms be painted each year. Thereby spreading the cost over a period of time rather than letting things go much longer and having to spend a larger amount to paint the entire building at one time.

Principal – Harold Smith
 Total Students = (253)
 Primary – Edythe Libby (31)
 Grade 1 – Marion Davis (30)
 Grade 2 – Geraldine Smith (40)
 Grade 3 – Thelma Cook (30)
 Grade 4 – Jean McLaughlin (24)
 Grade 5 – Harold Smith (20)
 Grade 6 – Doris Emery (25)
 Grade 7 – Douglas Doyon (26)
 Grade 8 – Ellen Cooper (24)

All Teachers, Substitutes or Assistants:

Jean MacLauchlan	Helen Rowe	Stanford Trask	Ellen Cooper
Thelma Cook	Geraldine Smith	Opal Day	Edythe Libby
Marguerite Goforth	Florence Philbrook	Harold Smith	Doris Emery
Glen White	Douglas Doyon	Marion Davis	Louis Garenani
Helen Littlefield	Helen Shorey	Sadie Randall	Perlene Walker
Ramona Wheeler			

Dr. Paul R. Briggs – School Physician

Examination of the students of the Hartland Schools was undertaken and found satisfactory. The rooms were pleasant, the general health good and supervision of the playgrounds was excellent. The pupils appeared alert and well cared for.

Town Report 1956-1957

Article 21: To see if the town will vote Yes or No on the following question: Shall the act to Increase the Borrowing Capacity of the Town of Hartland School District passed by the 98th Legislature, be accepted?

Article 22: To see if the town will vote to raise and appropriate the following sums as recommended by the Department of Education for the ensuing year under 1957 recommendations.

Common Schools including Bus Reserve	\$35,000.00
Repairs, Insurance and Contingence	\$200.00
Supervision, School Committee, Office	\$1,800.00
Health Services	\$180.00

Article 23: To see if the town will vote to join with the towns of Palmyra and St. Albans to form a community school district to be known as “Sebasticook Community School District.”

Article 24: To see if the town will vote that the district be authorized to acquire and hold property of a value not in excess of \$500,000.00 for the purpose of operating a Junior-Senior High School

Article 25: To see if the town will vote to authorize said community school district from time to time to borrow money and to issue its bonds and notes therefore in an amount not in excess of \$500,000.00

outstanding at any one time, exclusive of refundings, for the purpose of acquiring land, constructing and equipping a community school building, or buildings and related recreational and athletic facilities and for other purposes of the district.

Selectmen Note: Appointment of a planning committee at the special town meeting held October 11, 1956 should result in a better town. This committee has surveyed our school situation and several articles dealing with school improvement. The planning committee appointed at the special town meeting recommended the insertion of the above articles.

Superintendent of Schools: Harold E. Carson

School Committee: Maurice W. Hanson, Helen Littlefield, Keith R. Tapley

Town of Hartland School District Trustees: Fred W. Libby, Jean Stedman, Donald K. Hollister

School Physician: Dr. Paul R. Briggs

Harold E. Carson – Superintendent of Schools

I feel that we are all aware of the crowded conditions that exist in our lower grades. Therefore, I will only say that we have plans to build needed classrooms and add more teachers for next year. These plans can only be carried out if the voters of the town see the need and vote favorably at the annual town meeting.

The school population is increasing at the rate of one extra classroom or more a year and the indications are that this increase will continue for some time in the future. In addition to an increased enrollment on the secondary level another vital area that must be considered is a new law that becomes effective in 1960 relative to the accrediting of Maine Secondary Schools. Many changes and improvements must be met before a secondary school is accredited.

It is true that the school budget is the largest ever in this town. So is the number of pupils in our elementary schools. The school population is increasing at the rate of one extra classroom or more a year and the indications are that this increase will continue for some time in the future. The children are here and continue to arrive weekly, it is our obligation to give them an education. Today, like everything else, an education costs more money than formerly, hence the increase in the school budget.

Before I paint a picture that seems too dark, may I close with this thought. I feel, and I think rightly that the Hartland Schools, both elementary and secondary, have been as good as any in this state for a community of its size. Many of the schools' product have made good use of the training received here. However, this area is growing and in order to continue the good work of the past we must plan for the future.

Principal – Harold Smith

Total Students = (290)

Primary – Edythe Libby (41 w/2 Classes)

Grade 1 – Marion Davis (30)

Grade 2 – Geraldine Smith (41)

Grade 3 – Thelma Cook (38)

Grade 4 – Jean McLaughlin (35)

Grade 5 – Harold Smith (28)
Grade 6 – Doris Emery (22)
Grade 7 – Douglas Doyon (25)
Grade 8 – Ellen Cooper (30)

All Teachers, Substitutes or Assistants:

Rev. Charles Talmadge	Sadie Randall	Edythe Libby	Marion Davis
Geraldine Smith	Thelma Cook	Jean MacLaughlan	Douglas Doyon
Doris Emery	James Strickland	Harold Smith	Edwin Burke
Ellen Cooper	Elva Ingalls	Louis Garenani	Ramona Wheeler
Stanford Trask	Helen Littlefield		

Dr. Paul R. Briggs – School Physician

The inspection of the school children in Hartland this year revealed that the general physical condition has markedly improved. There seems to be good cooperation between teacher and pupil. The staff is excellent. The most prominent defect which was noted was the lack of dental care plus an overcrowding of the school. The rooms apparently have a somewhat higher census than would be considered ample regarding good health.

Town Report 1957-1958

Selectmen Note: Preliminary steps have been taken to set up an administrative district with several neighboring towns participating. It is felt that an improvement in educational advantages can be offered our children at no greater cost to the town.

Superintendent of Schools: Harold E. Carson

School Committee: Maurice W. Hanson, Helen Littlefield, Keith R. Tapley

Town of Hartland School District Trustees: Fred Libby, Jean Stedman, Donald Hollister, Ellen Cooper

School Physician: Dr. Paul R. Briggs

Harold E. Carson – Superintendent of Schools

Much educational progress has been made in the grades. The lower grades in particular are much to overcrowded for best teaching results. However, these teachers are doing exceptionally good work under adverse conditions. The solution to most of our educational ills is more classrooms and this matter is under consideration at present. The secondary school enrollment is increasing each year as we graduate larger classes from the elementary schools. I would expect an increase of 12 to 15 pupils beginning next September.

Your School Committee and Selectmen are having meetings and discussions with officials of surrounding towns. It is hoping that some concrete information will be available soon. All other aspects of the school program are proceeding normally and according to plans.

Principal – Harold Smith

Total Students = (282)

Primary – Edythe Libby (33)

Grade 1 – Gweneth Smith (39)
Grade 2 – Geraldine Smith (37)
Grade 3 – Thelma Cook (29)
Grade 4 – Jean McLaughlin (36)
Grade 5 – Harold Smith (34)
Grade 6 – Doris Emery (26)
Grade 7 – Douglas Doyon (25)
Grade 8 – Ellen Cooper (26)

All Teachers, Substitutes or Assistants:

Edythe Libby	Marion Davis	Geraldine Smith	Gerald Smith
Thelma Cook	Jean MacLauchlan	Harold Smith	Doris Emery
Douglas Doyon	Ellen Cooper	James Strickland	Elva Ingalls
Helen Littlefield	Ruth Knowles	Charles Talmadge	Sadie Randall
George Fullerkamp			

Dr. Paul R. Briggs – School Physician

Examination of the pupils in the Hartland Schools showed health measures to be well under control and disabilities that were correctable have, for the most part, responded well. Immunizations were offered for Poliomyelitis for the children and teachers. Influenza vaccination was performed on the teaching staff only, because of the limitation of the amount of vaccine available.

Town Report 1958-1959

Article 20: To see if the town will authorize the Hartland School District Committee to borrow money and construct an addition to the consolidated school as follows: music room, clinic room, school supply room, janitor supply room, teachers' room and office space. The above being equivalent to four classrooms including 2 small classrooms for special children.

Superintendent of Schools: Harold E. Carson

School Committee: Maurice W. Hanson, Helen Littlefield, Maynard Moore

Town of Hartland School District Trustees: Fred Libby, Donald Hollister, Ellen Cooper

School Physician: Dr. Paul R. Briggs

Harold E. Carson – Superintendent of Schools

For some time we have realized that we need more classroom and storeroom area at the elementary school. The recent inspection by the State Fire Department emphasized this need. As a result of this inspection and the fact that the town is facing \$400.00 plus per pupil for secondary tuition, I feel that it is time we took care of our elementary school needs. We have delayed needed building on the elementary level in anticipation of some financial assistance, which now seems to be within sight. However, four classroom spaces should be provided as soon as possible. This much space is needed regardless of what may develop in the immediate future.

Please note that our enrollment is still on the increase. In only two grades are there fewer pupils than the recommended teacher load. We have two new teachers in the system this year, namely, Mrs. Salisbury

and Mr. Stedman. They have done very well in their respective positions. This year, for the first time, we did departmental teaching in grades six, seven and eight.

It was hoped that the people of Hartland would have an opportunity to vote for or against the School Administration District at this annual town meeting. However, progress was slowed down to such an extent that now it will be necessary to hold a special town meeting. I would urge all parents and other interested taxpayers to become familiar with the application of the School Administrative District and what it would mean to the future of education in Hartland. When you have the opportunity to vote on this question, exercise this privilege and right. Your vote may influence the educational program in Hartland for years to come.

Principal – Harold Smith

Total Students = (280)

Primary – Edythe Libby (32)

Grade 1 – Mildred Salisbury (35)

Grade 2 – Geraldine Smith (35)

Grade 3 – Thelma Cook (31)

Grade 4 – Jean McLaughlin (32)

Grade 5 – Harold Smith (35)

Grade 6 – Doris Emery (34)

Grade 7 – Vaughn Stedman (25)

Grade 8 – Ellen Cooper (21)

All Teachers, Substitutes or Assistants:

Harold Smith	\$ 3,875.00
Edythe Libby	\$ 3,699.92
Geraldine Smith	\$ 3,624.92
Ellen Cooper	\$ 3,599.84
Doris Emery	\$ 3,158.30
Thelma Cook	\$ 3,083.30
Jean MacLauchlan	\$ 2,949.92
Douglas Doyon	\$ 2,100.00
James Strickland	\$ 1,604.20
Aime Simoneau	\$ 1,550.00
Vaughn Stedman	\$ 1,416.60
Gweneth Smith	\$ 1,236.72
Mildred Salisbury	\$ 1,158.30
Isabelle Southards	\$ 720.00
Harold E. Carson	\$ 145.00
Evangeline Matycqyk	\$ 50.00
David Nichols	\$ 50.00
Basil Osgood	\$ 50.00
Ronald Berry	\$ 50.00
Sadie Randall	\$ 27.00

<u>Rachel Sprague</u>	\$ 4.50
Total Teachers	\$34,528.52

Dr. Paul R. Briggs – School Physician

Examination of the pupils of Hartland schools was done in Sub-Primary, Third, Fifth and Eighth grades. General health conditions were satisfactory. Consultation, as regards to health improvement and future examinations, would be available to all school boards and welcomed by the school physician. Inoculations for Influenza were offered in 1958 and for Poliomyelitis in 1958 and 1959.

Town Report 1959-1960

Article 20: To see if the town will authorize the Hartland School District Trustees to borrow money and construct four additional classrooms at the Consolidated School.

Article 45: To see if the town will vote to establish a capital reserve account to be known as the Hartland School Bus Fund, and what sum of money, if any, the town will vote to raise and appropriate to be paid into this fund for the ensuing year.

Superintendent of Schools: Harold E. Carson

School Committee: Helen Littlefield, Maynard Moore, John Gee

Town of Hartland School District Trustees: Fred Libby, Donald Hollister, Ellen Cooper

School Physician: Dr. Paul R. Briggs

Harold E. Carson – Superintendent of Schools

In order to keep the school appropriation more uniform, I would suggest that some money be appropriated, this year, toward additional classrooms and equipment for these rooms. The enrollment in your elementary school is high in relation to the number of teachers. This means that the desired and recommended pupil teacher ratio (25-1) is not being maintained, for the best teaching and the best learning situations. You will note there is an average of 31.7 pupils per grade.

I consider that our teaching force is doing a very capable job in most instances. The results obtained by the department procedure in the three upper grades is particularly gratifying in the majority of cases. However, there are students in these grades who will not or who cannot grasp the work, as a result there will be those few pupils each year that will have to repeat grade 8 once and maybe more times.

Principal – Harold Smith

Total Students = (285)

Primary – Edythe Libby (34)

Grade 1 – Mildred Salsbury (34)

Grade 2 – Geraldine Smith (34)

Grade 3 – Thelma Cook (32)

Grade 4 – Muriel Small (27)

Grade 5 – Abbie Gerald (31)

Grade 6 – Doris Emery (36)

Grade 7 – Ellen Cooper (33)

Grade 8 – Harold Smith (24)

All Teachers, Substitutes or Assistants:

Edythe Libby	Mildred Salsbury	Geraldine Smith	Thelma Cook
Jean McLauchlan	Muriel Small	Harold Smith	Doris Emery
Vaughn Stedman	Abbie Gerald	Ellen Cooper	Aime Simoneau
Gweneth Smith	Sadie Randall	Basil Osgood	Morton Hamlin
Marguerite Goforth	Marion Furbush		

Dr. Paul R. Briggs – School Physician

Examination of the pupils of Hartland schools showed a lesser amount of physical defect in comparison with the previous school year. General Health conditions appeared good. Cooperation of parents, teachers, school nurse and School Board was commendable. Poliomyelitis vaccine was offered and in most instances given.

Town Report 1960-1961

Article 15: To see if the town will vote to employ a special officer under the jurisdiction of the selectmen, to perform such work as they may direct; and to employ two lady traffic guides, under the jurisdiction of the school department, one to be stationed in Warren Square, and the other at the intersection of Pittsfield Avenue and Main Street, during the periods that school children are passing to and from school.

Article 21: To see if the town will vote to authorize the Hartland School District Trustees to borrow money and construct 4 classrooms, combination gymnasium-cafeteria with outside boiler room and janitor room and remodel present gymnasium into library and music room.

Article 22: To see what action the town may wish to take regarding construction of a secondary education building.

Superintendent of Schools: Harold E. Carson

School Committee: Maynard Moore, John Gee, Robert Scott

Town of Hartland School District Trustees: Donald Hollister, Ellen Cooper

School Physician: Dr. Paul R. Briggs

Selectmen Note: Several meetings have been held with committees from nearby towns relative to construction of a secondary school unit. It is felt that a six year high school and utilization of the Academy building for two grades from Hartland and nearby towns may solve our crowded elementary situation.

Harold E. Carson – Superintendent of Schools

For the most part the progress in the school has been favorable in all areas. There are still unsatisfactory conditions existing that can only be improved by more rooms and more teachers. Until more elementary classrooms and more elementary teachers are available, not much can be done to help the crowded conditions.

Elsewhere in the town report will be recommendations and suggestions for improvement in school buildings. In the past I have made recommendations for more rooms and more teachers on the elementary

level. Whether the additional rooms are from new construction or from buildings already in use, it makes very little difference. The big need is more classrooms.

A big step forward was taken this past summer, when the school department instituted a four weeks summer course to any and all pupils on a voluntary basis. About 40 pupils took advantage of this school and they gained much help in subject areas that was giving the most trouble. It is planned to conduct a similar program during the summer of 1961.

The need on the secondary level is a matter of numbers as much as anything else. The only way to improve this situation in the near future is to combine secondary schools with nearby communities that face the same problems that we face. The cost of an accredited secondary school can only be justified by an enrollment large enough to warrant the expenditure of funds to have a good school.

Following is a brief outline of the school enrollment with teachers listed by grades. You will note there are five new teachers listed for this year. Many of our former teachers moved on to new positions. It is early yet to tell just how successful we have been in replacing those teachers. At present the new teachers seem to be adjusting well and doing good work.

Principal – Ernest Hughes

Total Students = (285)

Primary – Elsie Lawry (38)

Grade 1 – Mildred Salsbury (31)

Grade 2 – Katherine Sprague (35)

Grade 3 – Thelma Cook (36)

Grade 4 – Abbie Gerald (24)

Grade 5 – Lilla Eaton (31)

Grade 6 – Doris Emery (33)

Grade 7 – Allen Cousins (29)

Grade 8 – Ernest Hughes (28)

All Teachers, Substitutes or Assistants:

Elena Bird	Eugene Jackins	Helen Littlefield	Vaughn Stedman
Wayne Libby	Basil Osgood	Richard Ricker	Harold Smith
Ernest Hughes	Ellen Cooper	Allen Cousins	Doris Emery
Abbie Gerald	Muriel Small	Lilia Eaton	Thelma Cook
Geraldine Smith	Katherine Sprague	Mildred Salsbury	Edythe Libby
Elsie Lawry	Aime Simoneau	Sadie Randall	Mrs. Lowell Knowles

Dr. Paul R. Briggs – School Physician

Examination of the pupils of Hartland schools showed the general health of this group was excellent. A few correctable disabilities were noted and the parents were notified. The students appeared alert, responded well, for the most part, to psychological observation.

The general health has markedly improved over the period of years and appears much better than in the pre-consolidation period. Cooperation of the Department of Health has been appreciated and this service should be commended for their directives and interest in our children's welfare. The teachers, too, are more versed in recognizing symptoms and signs than in previous years. They also should be congratulated for their interest and concern in the progress and wellbeing of their charges.

Routine examinations have paid off in this improvement of the children's physical and mental conditioning. Nutrition, in general, has markedly been affected by the school lunch programs coupled with a higher standard of living and parental concern.

Town Report 1961-1962

Article 4: To see if the town will vote to increase the membership of the Superintending School Committee from three to five members.

Article 23: To see what action the town may wish to take regarding the crowded condition at the Consolidated School.

Article 25: To see what sum of money the town will vote to raise and appropriate for educational purposes, as follows: instruction, fuel, janitor service, conveyance, supplies, textbooks, board of pupils, health services, administration, secondary tuition, and maintenance of plant and equipment.
(Budget Committee recommends \$51,500.00)

Article 26: To see if the town will vote to authorize the selectmen to enter into a five year leasing agreement with the Joint School Committee of School Union No. 63 for the purpose of leasing rooms in the town hall of the town of Hartland, for which they will pay the renovation and construction costs. The annual fee for leasing shall be a sum equal to the cost of heating and lighting these leased rooms. The Joint Committee shall have the right to renew this lease at regular intervals as long as they deem it advisable to maintain a Superintendent of Schools' office in the Town Hall of the Town of Hartland.

Article 27: To see if the town will vote to authorize the selectmen and treasurer to issue notes or renewals thereof for the cost of renovation and construction of Superintendent of Schools offices in the town hall. All costs of construction and renovation, including interest on notes, to be paid by the school departments of Athens, Harmony, Hartland, Palmyra and St. Albans by equal annual installments payable over a three year period, on or before August 1 of each year. The amount due annually from each town shall be \$146.20 plus interest.

NEW SUPERINTENDENT OF SCHOOLS' OFFICE

Notes Payable	\$2,192.87
---------------	------------

Superintendent of Schools: Harold E. Carson (*thru September 1961*); Llewellyn N. Churchill

School Committee: Maynard Moore, John Gee, Robert Scott

Town of Hartland School District Trustees: Donald Hollister, Ellen Cooper, Anita McCormack

School Physician: Dr. Paul R. Briggs

Llewellyn N. Churchill – Superintendent of Schools

We still have the crowded conditions in our classrooms that have existed for the past several years. Until the time that more classroom space is available these pupils will be working under a great handicap. With the addition of but three rooms, much of this condition would be greatly relieved.

Providing the townspeople decide to raise funds to alter the present Activity Room, making it into three classrooms, or carry on a building program of a larger magnitude, funds will be needed for this. Alteration and/or construction funds would also be needed to pay for the necessary furnishings within the rooms and for the salaries of the additional teachers to carry on the instruction in these rooms.

For the sake of economy the Summer School Program has not been recommended this year. In the place of this program we are instituting a different testing program and adding several teaching aids to be used for these pupils needing corrective instruction. I feel that there was a definite benefit from the summer program that was terminated and sincerely hope it will be reinstituted in the foreseeable future.

I personally feel that the superintending school committee, the teaching staff and all connected with the education of your children are making a sincere effort to provide the best media for instruction within the frame work of the physical plant that now exists.

As you may remember this enrollment is larger than that of last year. Next year's expectations will find a still greater number. Several teaching aids have been added to the building equipment, especially in the science area. For the benefit of the pupils this program of aids should be continued to permit the faculty to take advantage of other inexpensive teaching materials that can be rented for use with them or purchased for a reasonable fee.

In the proposed budget we are requesting funds to hire an additional teacher. This will help to strengthen our reading program by giving an opportunity for several pupils to have corrective reading help. There is included funds for the purchase of a school bus to replace one we are now using.

HARTLAND SCHOOL PROPOSED BUDGET for 1962-1963

Balance \$7,653.54

<u>Item</u>	<u>1961-1962</u>	<u>Actual Expenditures</u>	<u>Request for 1962-1963</u>
Teachers	40,000.00	36,070.17	41,000.00
Conveyance	4,100.00	4,249.87	10,000.00 (Bus \$7,000.00)
Janitor	4,000.00	4,803.73	4,900.00
Fuel	1,800.00	1,464.53	1,800.00
Books	2,300.00	2,049.56	2,200.00
Supplies	3,800.00	4,019.10	3,700.00
Supervision	3,800.00	3,606.14	3,800.00
Health Services	150.00	125.00	150.00
Insurance	400.00	217.00	250.00
<u>Secondary Tuition</u>	<u>30,500.00</u>	<u>27,192.86</u>	<u>38,000.00</u>
Totals	90,850.00	83,797.96	105,800.00

Income:

Balance	7,653.54
State Subsidy	40,118.00
Total Income	47,771.54

Total Anticipated Appropriation	\$58,000.00	(Actual Appropriation was \$56,000.00)
Last Year's Appropriation	\$44,000.00	

We had several changes in the teaching staff this year. They are as follows: Mrs. Ethelyn Bowman, Primary; Miss Betty Tolman, Grade 4; Mr. John Wortman, Science and Social Studies in Grades 6, 7 & 8.

Principal – Ernest Hughes

Total Students = (294)

Primary – Ethelyn Bowman (39)

Grade 1 – Mildred Salsbury (38)

Grade 2 – Katherine Sprague (31)

Grade 3 – Thelma Cook (38)

Grade 4 – Betty Tolman (32)

Grade 5 – Lilla Eaton (20)

Grade 6 – Doris Emery (32)

Grade 7 – John Wortman (33)

Grade 8 – Ernest Hughes (31)

All Teachers, Substitutes or Assistants:

Christine DiPompo	Eugene Jackins	Diane Hamlin	Ernest Hughes
Allen Cousins	John Wortman	Doris Emery	Lilia Eaton
Abbie Gerald	Betty Lou Tolman	Thelma Cook	Katherine Sprague
Mildred Salsbury	Elsie Lawry	Ethelyn Bowman	Aime Simoneau
Sadie Randall	Harold Deinstadt	Beulah Moore	Carolyn Thomas
Helen Littlefield	Marilyn Cousins	Elena Bird	Robert Thomas
Truman Fowler			

Dr. Paul R. Briggs – School Physician

Examination of the pupils of Hartland Consolidated School showed the majority were in excellent health. There were a few disabilities recorded and referred to the parents. Cleanliness, nutrition, and absence of skin, as well as scalp, parasites are noteworthy. For this the parents and teachers deserve commendation. There was apparently a continuation of good habits and supervision. The pupils appeared alert, bright and happy, reflecting their adjustment, general adaptation to their contacts and accelerated programs.

Town Report 1962-1963

Article 23: To see what sum of money the town will vote to raise and appropriate for educational purposes, as follows: instruction, fuel, janitor service, conveyance, supplies, textbooks, board of pupils, health services, administration, secondary tuition and maintenance of plant and equipment.

(Budget Committee recommends \$69,000.00)

Superintendent of Schools: Llewellyn N. Churchill

School Committee: Maynard Moore, John Gee, Rae Jean Knowles

Town of Hartland School District Trustees: Donald Hollister, Anita McCormack, Edwin Mower

School Physician: Dr. Paul R. Briggs

Selectmen Special Note: After several years and countless special meetings, our town took a forward step in education by the construction of additional classrooms at the Consolidated School. We hope we have made the proper move to care for our common school needs for some time to come.

Llewellyn N. Churchill – Superintendent of Schools (*1st Page of Report Missing*)

I wish to thank you for your foresight in adding to your present building at this time. The enrollment as we had anticipated would not increase greatly this year although as a result of transient families it has fluctuated. We have continued our additions of teaching aids and rental programs. The assistance received from some of our charitable organizations has been greatly appreciated.

The budget, that is being presented this year, includes the salaries of two additional teachers, an increment to encourage the retention of our faculty and funds for maintaining the physical plant. We can only estimate what these increased maintenance costs will be for the coming year.

Principal – Ernest Hughes

Total Students = (298)

Primary – Madeline Anderson (40)

Grade 1 – Mildred Salsbury (24)

Grade 1 – Helen Littlefield (15)

Grade 2 – Helen Littlefield (8)

Grade 2 – Sylvia Gott (26)

Grade 3 – Thelma Cook (34)

Grade 4 – Elizabeth Russell (35)

Grade 5 – Douglas Gott (30)

Grade 6 – Doris Emery (21)

Grade 7 – Peter Nichols (35)

Grade 8 – John Wortman (30)

All Teachers, Substitutes or Assistants:

Wayne Libby	Dorothy Chase	Helene Libby	Christine DiPompo
Ernest Hughes	John Wortman	Doris Emery	Lilia Eaton
Douglas Gott	Betty Lou Tolman	Christine Champion	Thelma Cook
Katherine Sprague	Elizabeth Russell	Mildred Salsbury	Ethelyn Bowman
Sylvia Gott	Aime Simoneau	Helen Littlefield	Diane Hamlin
Emma Bubar	Robert Thomas	Ruth Knowles	Mrs. Earl Fletcher
Connie McDougal	Madeline Anderson	Morton Hamlin	Sadie Randall
Evangeline Matijczyk			

SCHOOL CROSSING PATROL

Paid:

Diane Taylor	\$ 54.60
Sally Deering	\$ 93.20
Elizabeth Winchester	\$ 41.90
Anna Chase	\$ 92.00
Natalie Nichols	\$115.50
Harvey Willey	\$ 67.00
Donald Hopkins	\$176.00
Henry Winchester	\$ 10.00

Dr. Paul R. Briggs – School Physician

The major part of this school year has revealed fewer cases of absenteeism due to illness than most of the previous years. The students had fewer correctable disabilities and both teachers, as well as pupils appeared well adjusted and happy in their environment. The physical plants in the schools seem adequate and the janitor service is good.

Town Report 1963-1964

Article 19: To see what sum of money the town will vote to raise and appropriate for educational purposes, as follows: instruction, fuel, janitor service, conveyance, supplies, textbooks, board of pupils, health services, administration, secondary tuition and maintenance of plant and equipment.

(Budget Committee recommends \$80,000.00)

Superintendent of Schools: Llewellyn N. Churchill

School Committee: Maynard Moore, John Gee, Rae Jean Knowles

Town of Hartland School District Trustees: Donald Hollister, Anita McCormack, Edwin Mower

School Physician: Dr. Paul R. Briggs

Llewellyn N. Churchill - Superintendent of Schools

Since our grade loads in the lower elementary are larger, the School Committee has found it necessary to divide the first grade into two rooms and have two combination grade rooms. The pupil loads in grade two through five were such that they felt this was the only possible solution under the circumstances.

As a result of relocating the departmentalized grades in the new addition much of the congestion, formerly experienced, has been relieved. There have been several educational aids added to the equipment through the School Committee and with the assistance of the P.T.C.C., which have broadened the curriculum, especially, in the science areas.

It appears that the curriculum we are able to offer the elementary student will continue to improve under the program studies which have begun. As the faculty becomes more acquainted with the newer practices and after careful analysis other improvements will be recommended to you. The necessity for change and upgrading of the curriculum is, as I am sure you realize, brought about as a result of the increased scholastic accomplishments required of today's youth – tomorrow's adult citizens.

The budget, presented to you elsewhere in this report by the Superintending School Committee, does call for a major increase for teachers and for tuition. Both of these requests are a direct reflection of an increase in the numbers of persons involved.

The physical plant at the elementary appears to be large enough to accommodate the present and near future needs for this age group. It would appear that some serious thought should be given to the problem which will be facing you after this period of time. You will be faced with a problem similar to that experienced recently. With this thought in mind, it would seem that it would be advantageous to formulate a committee to evaluate the possible avenues for these children's education and their perspective results.

The enrollment this year increased by about 5 per cent while the indications for the next five years lead me to believe that our enrollment will increase from 2 to 5 per cent annually with our present community housing.

Our faculty changed this year as a result of the resignation of Mrs. Madeline Anderson, Mr. Peter Nichols and Mr. John Wortman. Mrs. Jennie Burns was hired to teach Primary, Mrs. Charlotte Stafford, Departmental English-Reading and Mr. John Keenan, Departmental Social Studies- Science. There were two additions to our staff. Mrs. Mildred Weeks began teaching a combination grade in March and Mrs. Thera Finnemore combination grades 2-3 in September.

Principal - Ernest Hughes

Total Students = (310)

Primary - Jennie Burns (37)

Grade 1 - Helen Littlefield (22)

Grade 1 - Mildred Salsbury (25)

Grade 2 - Sylvia Gott (21)

Grade 2 - Thera Finnemore (10)

Grade 3 - Thera Finnemore (14)

Grade 3 - Thelma Cook (27)

Grade 4 - Elizabeth Russell (20)

Grade 4 - Mildred Weeks (11)

Grade 5 - Mildred Weeks (12)

Grade 5 - Douglas Gott (26)

Grade 6 - Doris Emery (28)

Grade 7 - Charlotte Stafford (23)

Grade 8 - John Keenan (34)

All Teachers, Substitutes or Assistants:

Ernest Hughes	John Wortman	Doris Emery	Douglas Gott
Elizabeth Russell	Thelma Cook	Sylvia Gott	Mildred Salsbury
Helen Littlefield	Madeline Anderson	Jennie Burns	Aime Simoneau
Peter Nichols	Charlotte Stafford	Mildred Weeks	Thera Finnemore
Ethelyn Bowman	Christine DiPompo	Mrs. Elden Chase	Helene Libby

Sadie Randall

Malcolm Brown

Vaughn Stedman

Wayne Libby

Rev. Theodore Blanchard

Dr. Paul R. Briggs – School Physician

Examination of pupils of Hartland Consolidated School in the 1963-64 period revealed health standards in general to be very good. Cards were sent home to parents when a disability was correctable.

From the safety standpoint it is recommended that a standard type of fire extinguisher be adopted, the door to the boiler room should swing outward, the toilet seats should be washed frequently with a dilute Lysol or Sulfanapthal solution to keep infectious hepatitis at a minimum.

All utensils in the school lunch would be safer for use if wrapped in a napkin following boiling and drying with dry heat. The students appeared alert and the educational standards are apparently excellent.

Town Report 1964-1965

Article 4: To see if the town will vote to increase the Superintending School Committee from the present three members to five members.

Article 22: To see what sum of money the town will vote to raise and appropriate for educational purposes, as follows: Instruction, fuel, janitor services, conveyance, supplies, textbooks, board of pupils, health services, administration, secondary tuition and maintenance of plant and equipment.

(Budget Committee recommends \$74,600.00)

Superintendent of Schools: Llewellyn N. Churchill (*thru September 1954*); Omar P. Norton

School Committee: John Gee, Rae Jean Knowles, Lucille Gilbert

Town of Hartland School District Trustees: Donald Hollister, Anita McCormack, Edwin Mower

School Physician: Dr. Paul R. Briggs

Omar P. Norton - Superintendent of Schools

During my brief tenure as your Superintendent of Schools, I have endeavored to become familiar with the strengths, weaknesses, and problems present in the Consolidated School.

The transportation of students has proven to be expensive and involved. Repairs on the 1954 GMC bus have been extensive. The noon run for Sub-Primary students is being handled by Mr. Simoneau.

The combination grades must be continued as the number of students in each grade affected remain too large (or small) to occupy a single classroom.

Remedial reading classes have been held to a minimum because of the utilization of this teacher in the developmental reading program in grades 6-7-8. A new English textbook series has been purchased for grades 3 through grade 8. This new series should lend a unified and progressive approach to the task of imparting the basics of our language to the students. Directions will be given to a comprehensive testing program for the students in grades 3 through grade 8.

One of the most perplexing problems has been securing and retention of teachers. We have experienced no fewer than eight changes in our staff since last year.

Principal - Eugene Morrison

Total Students = (287)

Primary - Jennie Burns (29)

Grade 1 - Helen Littlefield (25)

Grade 1&2 - Dorothy Chase (20)

Grade 2 - Ethelyn Bowman (22)

Grade 2&3 - Thera Finnemore (23)

Grade 3 - Mildred Weeks (19)

Grade 4 - Elizabeth Russell (25)

Grade 4&5 - Ronald Spiegel (24)

Grade 5&6 - Alta Andrews (24)

Grade 5 - Doris Emery (26)

Grade 7 - Eleanor Norton (26)

Grade 8 - Charles Wing (24)

All Teachers, Substitutes or Assistants:

Ernest Hughes	John Wortman	Charlotte Stafford	Eugene A. Morrison
Doris Emery	Douglas Gott	Charles Wing	Elizabeth Russell
Mildred Weeks	Thelma Cook	Eleanor Norton	Sylvia Gott
Alta Andrews	Thera Finnemore	Helen Littlefield	Mildred Salsbury
Sylvia Fitts	Jennie Bums	Aime Simoneau	Helene Libby
Natalie Nichols	Sadie Randall	Rose Pettengill	Ethelyn Bowman
James A. Keenan	Rev. Gerald Scott	Dorothy Chase	Ruth Knowles
Ruth Jones	Rev. Whitefield Curtis	Dorothy Hesketh	Harvey Hayden
Evangeline Matijczyk	Katherine Sprague	Marie Girardin	Ronald Spiegel
Rev. Theodore Blanchard			

Dr. Paul R. Briggs – School Physician

No Physician's Report was printed in this edition.

8th Grade Graduation 1965
Hartland Consolidated School



*These students would become part of the 1st Class to graduate
from Nokomis Regional High School in 1969.*

Town Report 1965-1966

Article 5: To elect a resident of Hartland to serve on the Board of Directors of School Administrative District 48 until the next regular town meeting.

Superintendent of Schools: Omar P. Norton

School Committee: Rae Jean Knowles, Lucille Gilbert, Roscoe Arno

School Administrative District No. 48 Board: Rae Jean Knowles, Lucille Gilbert, Roscoe Arno

Town of Hartland School District Trustees: Donald Hollister, Anita McCormack, Maynard Moore

School Physician: Dr. Paul R. Briggs

Omar P. Norton - Superintendent of Schools

The past year witnessed an event which will shape the pattern of education in this area for years to come. Naturally, I am referring to the formation of School Administrative District #48 voted into being on November 16, 1965 by the citizens of Hartland, Corinna, Newport, Palmyra and St. Albans.

I pledge my every effort in making a smooth and successful changeover from the school union to school district form of organization. My conviction that school administrative districts are good and are here to stay has not changed in the least. Many towns which have not acted in the school redistricting movement now find themselves out of step with the times and often in the precarious position of being unable to readily join a district.

The multiple grades at the Consolidated School were reduced to one; a Grade One and Two combination. The return to straight grades was made possible by forming two Third Grade classes, one Second Grade class, one First & Second Grade combination, and one First Grade class. However, because of a large Kindergarten Class this year, it would seem to indicate that the combination grades will again be necessary next year. Three faculty changes were made this year compared to the eight changes last year.

Principal - Eugene Morrison

Total Students = (295)

Primary - Jennie Burns (40)

Grade 1 - Helen Littlefield (21)

Grade 1 - Ethelyn Bowman (10)

Grade 2 - Ethelyn Bowman (11)

Grade 2 - Sylvia Lee Tibbetts (19)

Grade 3 - Thera Finnemore (20)

Grade 3 - Mildred Weeks (22)

Grade 4 - Elizabeth Russell (29)

Grade 5 - Alta Andrews (33)

Grade 6 - Doris Emery (27)

Grade 7 - Eleanor Norton (36)

Grade 8 - Charles Wing (27)

All Teachers, Substitutes or Assistants:

Eugene A. Morrison	\$ 4,866.52
Eleanor Norton	\$ 4,429.09
Jennie Burns	\$ 4,212.50
Charles Wing	\$ 4,120.76
Alta Andrews	\$ 4,054.05
Doris Emery	\$ 4,029.02
Mildred Weeks	\$ 3,999.90
Helen Littlefeld	\$ 3,863.37
Thera Finnemore	\$ 3,816.57
Sylvia Lee Tibbetts	\$ 3,434.62
Elizabeth Russell	\$ 3,159.08
Ronald Spiegel	\$ 2,566.50
Aime Simoneau	\$ 2,499.90
Norma Cote	\$ 2,093.00
Ethelyn Bowman	\$ 2,003.85
Judith Lombard	\$ 1,300.00

Robert Reisner	\$ 933.31
Rev. Theodore Blanchard	\$ 603.50
Helen Libby	\$ 439.75
Dorothy Chase	\$ 274.00
Natalie Nichols	\$ 240.00
Donna Curtis	\$ 60.00
Vaughn Stedman	\$ 50.00
Fred W. Libby	\$ 50.00
Evangeline Matijczyk	\$ 50.00
Harvey Hayden	\$ 50.00
Ruth Jones	\$ 30.00
<u>Rev. Winifield Curtis</u>	<u>\$ 30.00</u>
Total Teachers	\$57,259.29

CONVEYANCE

Harry Stafford	\$ 940.00
Stephen McNichols	\$ 450.00
Aime Simoneau	\$ 348.00
Rae's General Hardware	\$ 854.28
Eugene Morrison	\$ 16.00
Coston's Garage	\$ 568.92
Percy Butterfield	\$ 23.84
Wilford Nadeau	\$ 418.30
Steve's Gulf	\$ 17.54
Johnson & Hibbard	\$ 6.00
Claude E. Fisher	\$ 229.43
Glen's Auto Sales	\$ 1,174.56
Wesley Ham	\$ 420.00
<u>W. H. Shurtleff Co.</u>	<u>\$ 21.74</u>
Total Conveyance	\$ 5,488.61

Dr. Paul R. Briggs – School Physician

No Physician's Report was printed in this edition.

FINAL HARTLAND SCHOOL FINANCIAL REPORT

Receipts:

Balance	\$ 5,378.79
Appropriation	\$ 74,600.00
State Subsidy - Home Economics	\$ 1,265.29
Omar Norton (telephone)	\$ 172.00
Follett Company	\$ 10.72
Children's Press	\$ 9.90
Machine - Hartland Consolidated	\$ 3.10

Wilfred Nadeau	\$ 50.00
Lucille Gilbert	\$ 31.92
Ministerial Fund	\$ 41.54
State School Subsidy	\$ 55,858.50
Total Receipts	\$137,421.76

Expenditures:

Teachers	\$ 57,259.29
Conveyance	\$ 5,488.61
Janitors	\$ 4,705.08
Books	\$ 2,459.21
Fuel	\$ 2,065.80
Supplies (including CMP)	\$ 5,695.72
Superintendent & School Committee	\$ 2,465.50
Superintendent Office Account	\$ 1,911.43
Health Services	\$ 125.00
Elementary Tuition	\$ 261.58
Secondary Tuition	\$ 29,903.25
Vocational Account	\$ 4,507.68
Total Expenditures	\$116,848.15

Balance \$ 20,573.61

Town Report 1966-1967

School Administrative District No. 48 Assessment: \$ 72,239.62 - Paid: \$ 72,239.62

Beginning with the 1966-1967 Town Report, Hartland no longer reported specific details on their schools in Town Reports in concurrence with the formation of Maine School Administrative District #48.

The End of the Hartland Common School Era

Following 145 years under the supervision of the Hartland Common School System, students of the new Maine School Administrative District #48 continued attending their respective area schools while plans for a new regional high school were formed and brought to fruition. The area high school classes of 1967 & 1968 from Hartland Academy, Corinna Union Academy and Newport High School received diplomas noting both their respective school name and M. S. A. D. 48.

In the fall of 1968, the newly built Nokomis Regional High School located on the Williams Road in Newport opened for Grade 9 thru Grade 12 district area students from Hartland, Corinna, Newport, Palmyra and St. Albans with Etna and Dixmont joining the district soon after.

In the fall of 1968, the former Hartland Academy became Hartland Junior High School for Grade 7 and Grade 8 for Hartland, St Albans & Palmyra students with Primary through Grade 6 remaining at the Hartland Consolidated School.

Students of Hartland in the graduating Class of 1972 became the only class since the new brick facility was built in 1856 not to attend Hartland Academy as high school students going directly from Hartland Consolidated School as 8th Graders to Nokomis Regional High School as 9th Graders in the fall of 1968.

Hartland Junior High School continued serving local communities until it closed in 2002 to make way for the new Somerset Valley Middle School built on the hill behind the Academy Athletic Field which included Grades 5 through 8 for Hartland, St. Albans & Palmyra students beginning in the fall of 2002. Primary through Grade 4 remained at the Hartland Consolidated School.



Corinna Junior High School (formerly Corinna Union Academy) & Newport Junior High School (formerly Newport High School) also closed in 2002 and their students attended the new Sebec Valley Middle School in Newport along with Grade 5 & 6.

In 2008, pursuant to a change in Maine Law intended to save on administrative costs by consolidating Maine's numerous smaller school districts into larger districts, Maine School Administrative District #48 was reorganized as Regional School Unit #19 which still included Hartland, Corinna, Newport, Palmyra, St. Albans, Etna and Dixmont.

Hartland Consolidated School closed its doors as an educational facility in 2017 following the building of a new Nokomis Regional High School/Middle School complex in Newport which opened in the fall of

2019 serving Grade 5 through Grade 12. The St. Albans Elementary School and Palmyra Elementary School also closed around the same time.

Students from Hartland Consolidated School, St. Albans Elementary School and Palmyra Elementary School in Primary through Grade 4 transferred to the former Somerset Valley Middle School building which was renamed Somerset Elementary School in 2019.



In 2021, the original section of the Hartland Consolidated School building was razed to make way for a new Senior Housing Project by KVCAP who purchased the facility in 2019.

